

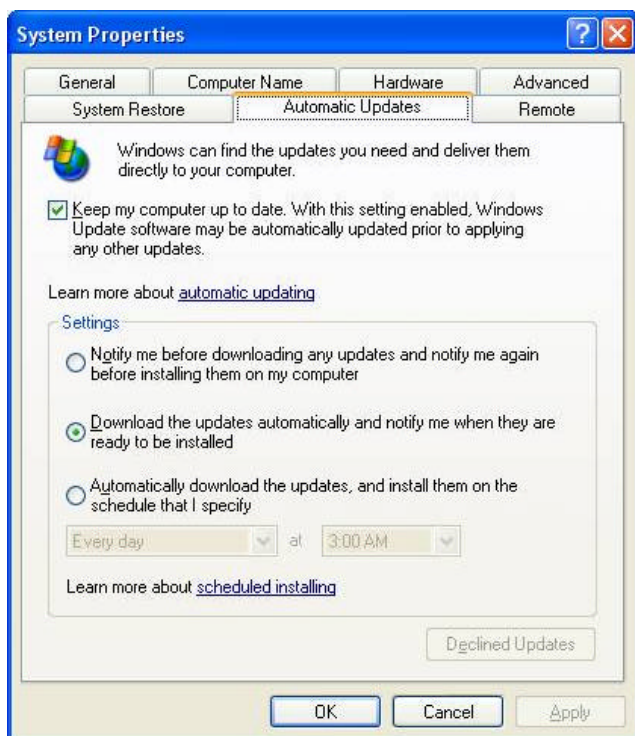
### Windows Update Automatic Configuration

**Windows Update** is a part of your Microsoft Windows Operating System and will help keep your computer healthy. **Windows Update** is an important tool for keeping your Windows computer up-to-date and protected against security threats. Review these instructions for configuring your computer to automatically accept updates.

#### CONFIGURING AUTOUPDATE WINDOWS XP

You may configure Windows Update to automatically install.

1. Click on My Computer.
2. Go to Control Panel.
3. Select the System icon.
4. Choose the Automatic Updates tab.



You may configure the settings to suit your preference. It is recommended that you choose the settings displayed at left.

You will then need to click “Apply” and “OK.”

When new updates are ready to be installed, an icon, circled in red above, will appear in your system tray. Click that icon to begin the installation wizard. Follow the prompts.

If you have any question or concerns, please email the Helpdesk ([helpdesk@anselm.edu](mailto:helpdesk@anselm.edu)) or call extension HELP (4357) from on campus.

You can also manually scan for **Windows Updates**. To learn how, click this link: [Performing Windows Update](#).