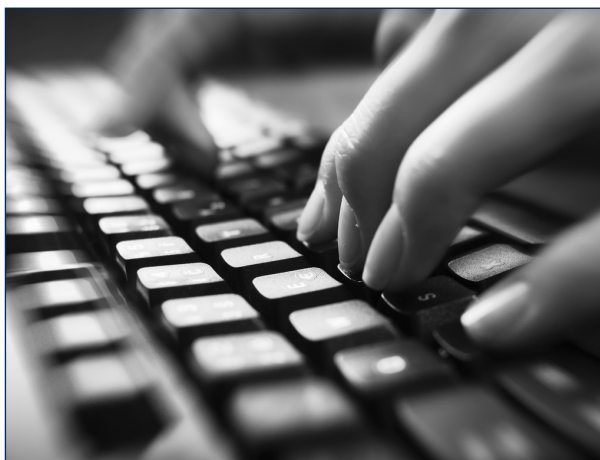


## COMPUTER REQUIREMENTS

- **A computer capable of running current software and web browsers.**
  - For PC: Windows XP or higher
  - For Mac: Mac OS X, version 10.3 or higher
- **Internet access**
  - 56 kbps modem (DSL or cable modem strongly recommended)
  - Web browser (Firefox 3 or higher)
- **Additional Software or Plug-ins:**
  - Microsoft Office 2000 or higher / Microsoft Open Office (alternative)
  - Adobe Acrobat Reader
- **Important Media Players**
  - Flash player
  - For PC user: Windows Media Player
  - For Mac user: Quick Time Player

Non-Profit Org.  
US POSTAGE  
**PAID**  
Manchester, NH  
Permit #6035



Additional program information is available on our website:

[WWW.ANSELM.EDU/CNE](http://WWW.ANSELM.EDU/CNE)



[www.facebook.com/cne.saintanselm](http://www.facebook.com/cne.saintanselm)

 **SAINT ANSELM**  
COLLEGE  
**CONTINUING NURSING EDUCATION**  
100 Saint Anselm Drive  
Manchester, NH 03102-1310

Change Service Requested



[www.facebook.com/cne.saintanselm](http://www.facebook.com/cne.saintanselm)

visit us online:

[www.anselm.edu/cne](http://www.anselm.edu/cne)

ADV-NUR 2021-22

*Looking  
through the  
Leadership Lens*

**NEW Virtual  
Format—  
No Travel  
Needed!**

**2021-2022**

**ADVANCED  
NURSING  
LEADERSHIP  
CERTIFICATE**

Provided by:



**SAINT ANSELM**  
COLLEGE

**CONTINUING NURSING EDUCATION**

Committed to Advancing the Practice of Nursing

Manchester, NH

## PROGRAM DESCRIPTION

**DESCRIPTION:** This innovative online certificate program is designed to explore the various components to develop a nurse leader, whose goal is to enhance and empower oneself in advancing the future of the nursing profession.

**WHO:** Any nurse who practices in a leadership role, including but not limited to, nurse educators, clinical nurse managers, charge nurses, supervisors and directors. Staff nurses with 5 years' experience interested in seeking a leadership role should consider this offering.

The content will prepare the nurse leader to sit for the following national certifications: American Organization of Nurse Executives: Nurse Manager and Leader, Certificate in Executive Nurse Practice, and/ or American Nurses Credentialing Center: Nurse Executive Board Certified provided the applicant meets the eligibility requirements for these specific exams.

**WHAT:** In order to receive this 60-hour certificate (equal to 60 contact hours), completion of the four modules is required. Each module is 15 contact hours and is taught in an online format: 6 hours virtual live webinar, 9 hours online utilizing discussion boards and case studies, and required reading over the course of 4 weeks in an asynchronous manner.

**CANCELLATION:** A \$30 processing fee will be charged when cancelled at least 7 business days prior to conference. No refunds given with less than 7-day notice.

## QUESTIONS?

Please contact Gina Gulino-Payne at 603-641-7086 or ggulinopayne@anselm.edu. To register, please visit our website at [www.anselm.edu/cne](http://www.anselm.edu/cne).

[WWW.ANSELM.EDU/CNE](http://WWW.ANSELM.EDU/CNE)

## SCHEDULE: 2021 & 2022

### MODULE 3: BLENDING MISSION AND MARGIN: BUSINESS SKILLS FOR THE NURSE LEADER

SEPTEMBER 16-OCTOBER 13, 2021 • 15 CONTACT HOURS • FEE: \$284

Virtual live webinar: Thursday, September 16: 8:30-4:00 pm; remainder of program online.

*Topics include:* systems-based thinking; data management; financial implications of care; accountable care organizations

### MODULE 4: FUTURE OF NURSING: QUALITY, HEALTHCARE POLICY, AND PATIENT OUTCOMES

NOVEMBER 4- DECEMBER 3, 2021 • 15 CONTACT HOURS • FEE: \$284

Virtual live webinar: Thursday, November 4: 8:30-4:00 pm; remainder of program online.

*Topics include:* the role as a leader in: strategic leadership, IOM goals/nurse of the future; patient outcomes; interdisciplinary care; patient satisfaction measures

### MODULE 1: LEADERSHIP AND THE PROFESSION OF NURSING

FEBRUARY 24-MARCH 23, 2022 • 15 CONTACT HOURS • FEE: \$284

Virtual live webinar: Thursday, February 24: 8:30-4:00 pm; remainder of program online

*Topics include:* role modeling/coaching; vision/influence; leadership and management differences; facilitating change

### MODULE 2: LEADING PEOPLE: THE ART OF TRULY BEING PRESENT

APRIL 7-MAY 4, 2022 • 15 CONTACT HOURS • FEE: \$284

Virtual live webinar: Thursday, April 7: 8:30-4:00 pm; remainder of program online

*Topics include:* communication skills; shared decision-making; conflict resolution; relationship building

Saint Anselm College is approved as a provider of nursing continuing professional development by the Northeast Multistate Division, an accredited approver by the American Nurses Credentialing Center's Commission on Accreditation.

Cut along here

## REGISTRATION FORM ADVANCED NURSING LEADERSHIP CERTIFICATE

**MAIL:** Saint Anselm College  
Continuing Ed #1745  
100 Saint Anselm Drive  
Manchester, NH 03102-1310

**PHONE:** 603-641-7086,  
credit card required

**FAX:** 603-641-7089  
credit card required  
**ONLINE:** [www.anselm.edu/cne](http://www.anselm.edu/cne)  
credit card required

### PLEASE PRINT CLEARLY OR TYPE.

Name \_\_\_\_\_

Credentials \_\_\_\_\_

Home Address \_\_\_\_\_

City \_\_\_\_\_ State \_\_\_\_\_ Zip \_\_\_\_\_

Home Phone ( \_\_\_\_\_ ) \_\_\_\_\_

Work Phone ( \_\_\_\_\_ ) \_\_\_\_\_

Email \_\_\_\_\_

REQUIRED FOR CONFIRMATION

Employing Agency \_\_\_\_\_

Address \_\_\_\_\_

City \_\_\_\_\_ State \_\_\_\_\_ Zip \_\_\_\_\_

### MODULES

- ☐ **3. Blending Mission and Margin: Business Skills for the Nurse Leader: SEPT 16-OCT 13, 2021** \$284
- ☐ **4. Future of Nursing: Quality, Healthcare Policy, and Patient Outcomes: NOV 4- DEC 3, 2021** \$284
- ☐ **1. Leadership and the Profession of Nursing: FEBRUARY 24-MARCH 23, 2022** \$284
- ☐ **2. Leading People: The Art of Truly Being Present: APRIL 7-MAY 4, 2022** \$284

### METHOD OF PAYMENT

- ☐ Check enclosed made payable to Saint Anselm College in the amount of \$ \_\_\_\_\_
- ☐ I authorize the use of my credit card: ☐ VISA ☐ MasterCard
- Account # \_\_\_\_\_ Exp \_\_\_\_\_
- Amount Authorized: \$ \_\_\_\_\_ Date \_\_\_\_\_
- Signature \_\_\_\_\_