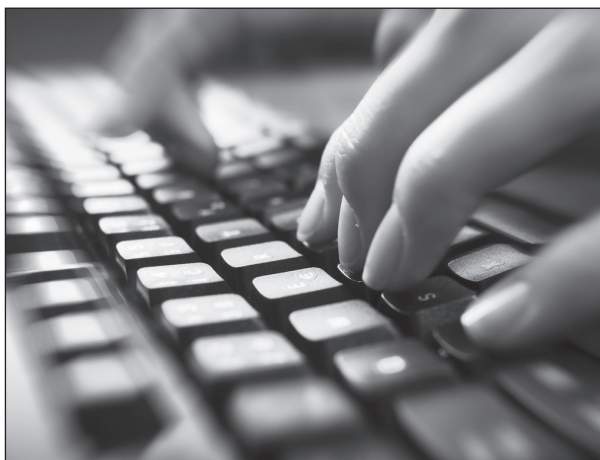


## COMPUTER REQUIREMENTS

- **A computer capable of running current software and web browsers.**
  - For PC: Windows XP or higher
  - For Mac: Mac OS X, version 10.3 or higher
- **Internet access**
  - 56 kbps modem (DSL or cable modem strongly recommended)
  - Web browser (Firefox 3 or higher)
- **Additional Software or Plug-ins:**
  - Microsoft Office 2000 or higher / Microsoft Open Office (alternative)
  - Adobe Acrobat Reader
- **Important Media Players**
  - Flash player
  - For PC user: Windows Media Player
  - For Mac user: Quick Time Player

Non-Profit Org.  
US POSTAGE  
**PAID**  
Manchester, NH  
Permit #6035



Additional program information is available on our website:

[WWW.ANSELM.EDU/CNE](http://WWW.ANSELM.EDU/CNE)



[www.facebook.com/cne.saintanselm](http://www.facebook.com/cne.saintanselm)

**SAINT ANSELM**  
COLLEGE  
1889

**CONTINUING NURSING EDUCATION**  
100 Saint Anselm Drive  
Manchester, NH 03102-1310

Change Service Requested



[www.facebook.com/cne.saintanselm](http://www.facebook.com/cne.saintanselm)

visit us online:  
[www.anselm.edu/cne](http://www.anselm.edu/cne)

SIMUL-CERT 2022

**NEW**  
**Virtual Format—**  
**No Travel**  
**Needed!**

**2022**  
**HEALTHCARE SIMULATION**  
**EDUCATOR CERTIFICATE**

Provided by:



**SAINT ANSELM**  
COLLEGE  
1889

**CONTINUING NURSING EDUCATION**  
Committed to Advancing the Practice of Nursing

Manchester, NH

## PROGRAM DESCRIPTION

**DESCRIPTION:** This innovative online certificate program is designed to explore the various components necessary to develop and run simulation scenarios within an academic or clinical setting.

**WHO:** Any nurse practicing in an education role who is interested in developing or working in a simulation program. This would be applicable to nurse educators in academia or healthcare facilities, preceptors, mentors, or staff nurses who are interested in learning more about this teaching pedagogy.

The content will provide the nuts and bolts of simulation to include how to assess educational needs, develop, implement and evaluate simulation experiences.

**WHAT:** In order to receive this 60-hour certificate (equal to 60 contact hours), completion of the four modules is required. Each module is 15 contact hours and is taught in an online format: 6 hours virtual live webinar, 9 hours online utilizing discussion boards and case studies, and required reading over the course of 4 weeks in an asynchronous manner.

**CANCELLATION:** A \$30 processing fee will be charged when cancelled at least 7 business days prior to conference. No refunds given with less than 7-day notice.

## QUESTIONS?

Please contact Gina Gulino-Payne at 603-641-7086 or ggulinopayne@anselm.edu. To register, please visit our website at [www.anselm.edu/cne](http://www.anselm.edu/cne).

Saint Anselm College is approved as a provider of nursing continuing professional development by the Northeast Multistate Division Education Unit, an accredited approver by the American Nurses Credentialing Center's Commission on Accreditation.

[WWW.ANSELM.EDU/CNE](http://WWW.ANSELM.EDU/CNE)

## SCHEDULE: 2022

### MODULE 1: OVERVIEW OF SIMULATION

**MARCH 11-APRIL 7, 2022**

**15 CONTACT HOURS • FEE: \$284**

Virtual live webinar: Friday, March 11: 8:30-4pm;  
remainder of program online.

*Topics include:* history, types of simulation, purpose, learning theory, learning styles, simulation lab resources

### MODULE 2: ART OF DEBRIEFING

**APRIL 22-MAY 19, 2022**

**15 CONTACT HOURS • FEE: \$284**

Virtual live webinar: Friday, April 22: 8:30-4pm;  
remainder of program online.

*Topics include:* purpose and importance of debriefing, role of facilitator, rules of debriefing, types of debriefing

### MODULE 3: DESIGNING AND IMPLEMENTING SIMULATION SCENARIOS

**OCTOBER 7-NOVEMBER 4, 2022**

**15 CONTACT HOURS • FEE: \$284**

Virtual live webinar: Friday, October 7: 8:30-4pm;  
remainder of program online.

*Topics include:* nursing education simulation framework incorporating roles of facilitator and participant, educational practices, simulation outcomes and design characteristics.

### MODULE 4: TRENDS IN HEALTHCARE AND USE OF SIMULATION TO IMPACT PATIENT OUTCOMES

**NOVEMBER 18-DECEMBER 15, 2022**

**15 CONTACT HOURS • FEE: \$284**

Virtual live webinar: Friday, November 18: 8:30-4pm;  
remainder of program online.

*Topics include:* evaluation instruments, current research and trends in outcomes, trends in simulation, utilization of resources.

## REGISTRATION FORM

### HEALTHCARE SIMULATION EDUCATION CERTIFICATE

**MAIL:** Saint Anselm College  
Continuing Ed #1745  
100 Saint Anselm Drive  
Manchester, NH 03102-1310

**PHONE:** 603-641-7086,  
credit card required

**FAX:** 603-641-7089  
credit card required  
**ONLINE:** [www.anselm.edu/cne](http://www.anselm.edu/cne)  
credit card required

### PLEASE PRINT CLEARLY OR TYPE.

Name \_\_\_\_\_

Credentials \_\_\_\_\_

Home Address \_\_\_\_\_

City \_\_\_\_\_ State \_\_\_\_\_ Zip \_\_\_\_\_

Home Phone ( \_\_\_\_\_ ) \_\_\_\_\_

Work Phone ( \_\_\_\_\_ ) \_\_\_\_\_

Email \_\_\_\_\_

REQUIRED FOR CONFIRMATION

Employing Agency \_\_\_\_\_

Address \_\_\_\_\_

City \_\_\_\_\_ State \_\_\_\_\_ Zip \_\_\_\_\_

### MODULES

- ☐ **1. Overview of Simulation • MAR 11–APR 7, 2022** \$284
- ☐ **2. Art of Debriefing • APR 22–MAY 19, 2022** \$284
- ☐ **3. Designing and Implementing Simulation Scenarios • OCT 7–NOV 4, 2022** \$284
- ☐ **4. Trends in Healthcare and Use of Simulation to Impact Patient Outcomes • NOV 18–DEC 15, 2022** \$284

### METHOD OF PAYMENT

- ☐ Check enclosed made payable to Saint Anselm College in the amount of \$ \_\_\_\_\_
- ☐ I authorize the use of my credit card: ☐ VISA ☐ MasterCard

Account # \_\_\_\_\_ Exp \_\_\_\_\_

Amount Authorized: \$ \_\_\_\_\_ Date \_\_\_\_\_

Signature \_\_\_\_\_

Cut along here