

A SURVEY OF NEW HAMPSHIRE VOTER ATTITUDES

CONDUCTED
October 20-22, 2021

Neil Levesque

EXECUTIVE DIRECTOR,
NEW HAMPSHIRE INSTITUTE OF POLITICS

FACULTY ADVISOR

Tauna Sisco

CHAIR, DEPARTMENT OF SOCIOLOGY



**NEW HAMPSHIRE
INSTITUTE OF POLITICS**

Saint Anselm College

Survey Notes	3
Executive Summary	4
Charts	5
Weighted Marginals	9
Weighted Tables	15
Demographics	38
About the SACSC	41

These results are from the Saint Anselm College Survey Center poll based on online surveys of 1323 New Hampshire registered voters. Surveys were collected between October 20th and 22nd, 2021, from cell phone users randomly drawn from a sample of registered voters reflecting the demographic and partisan characteristics of the voting population. Names were presented in random order for the job approval series and the Senate ballot test. The survey has an overall margin of sampling error of +/- 2.7% with a confidence interval of 95%; the margin of sampling error for questions specific to congressional districts are 3.7% for the 1st Congressional District and 3.9% for the 2nd Congressional District. The data are weighted for age, gender, geography, and education based on a voter demographic model derived from historical voting patterns, but are not weighted by party registration or party identification.

New Hampshire Institute of Politics Executive Director Neil Levesque summarized the results, saying, “President Joe Biden’s job approval has stabilized from its summer decline, and now sits at 44%-56%, similar to our August poll when it was at 44%-55%. The generic congressional ballot has also stabilized, remaining unchanged since August at 46%-43% in favor of Republicans.

“That’s the only good news for incumbents, however, as 68% of voters now believe the country is on the wrong track against only 21% that believe it is on the right track. Any voter optimism occasioned by the election of Biden has all but dissipated. The entire Congressional delegation is now underwater on their job approval, with Senator Jeanne Shaheen closest to even at 46%-48%. Senator Maggie Hassan has continued her slide and now sits at 44%-50%. Congressman Chris Pappas (42%-46%) and Congresswoman Annie Kuster (40%-46%) are in negative territory for the first time in the history of this poll.

“Governor Chris Sununu continues to receive high marks for his handling of COVID, with 71% of voters approving of the job he’s done on this front. Despite that, his overall job approval continues to deteriorate and now sits at 56%-42%, down from his 2021 high of 72%-27% in our February poll. This decline is driven primarily by partisan polarization as New Hampshire continues to move past COVID: In February, Democratic voters approved of Sununu’s job performance 56%-42%. Today, Democratic voters continue to approve of his COVID performance by almost the same percentage (56%-41%), but now disapprove of his overall performance by a wide margin (73%-25%).

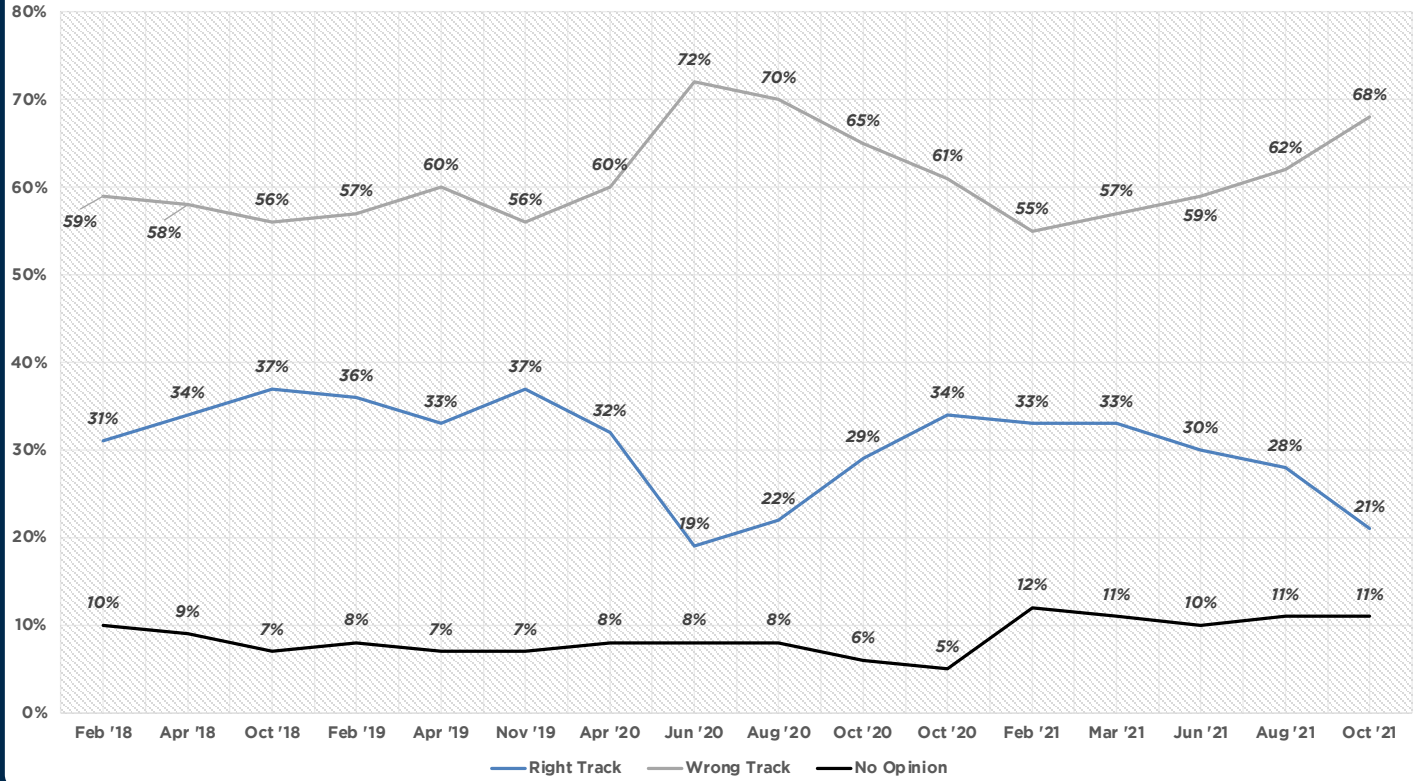
“Hassan is beginning to show some resilience in this increasingly polarized political environment, rebounding in a hypothetical ballot matchup with Sununu from a 9-point deficit in August (49%-40% Sununu) to a 5-point deficit today (46%-41%). Her ballot strength has stabilized as Sununu’s has weakened in the face of his declining job approval.

“Support for a vaccine mandate has slid from 50%-47% in August to 46%-52% today, and now faces majority opposition. At the same time, voters who say they will get a booster shot as soon as it is available have declined from 52% to 46%.

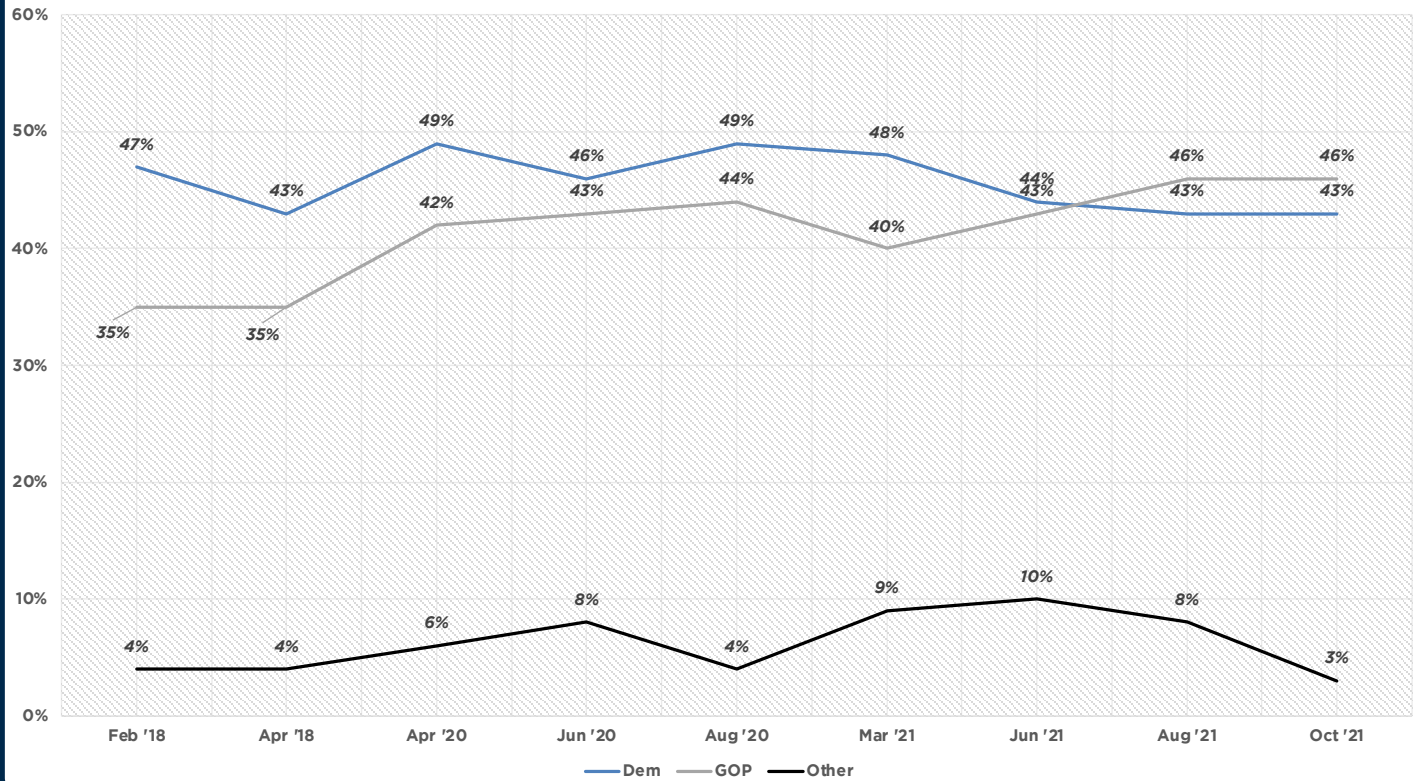
“In budget politics, a plurality of voters (40%) believes that neither the \$1 trillion infrastructure bill nor the \$3.5 trillion “Build Back Better Act” should be passed, versus 30% that believe that both should be passed. 74% of Republicans oppose both bills, while 62% of Democrats support passage of both. A plurality of Undeclared voters (40%) believes neither should be passed, while 26% believe both should pass. Meanwhile, voter concern about inflation has declined substantially, with 61% extremely or very worried, down from 83% in our June poll.

“The 2022 election cycle continues to be very dynamic as incumbents weather stiff political winds. With challengers already raising money, the next few months are likely to see the field beginning to take shape,” Levesque concluded.

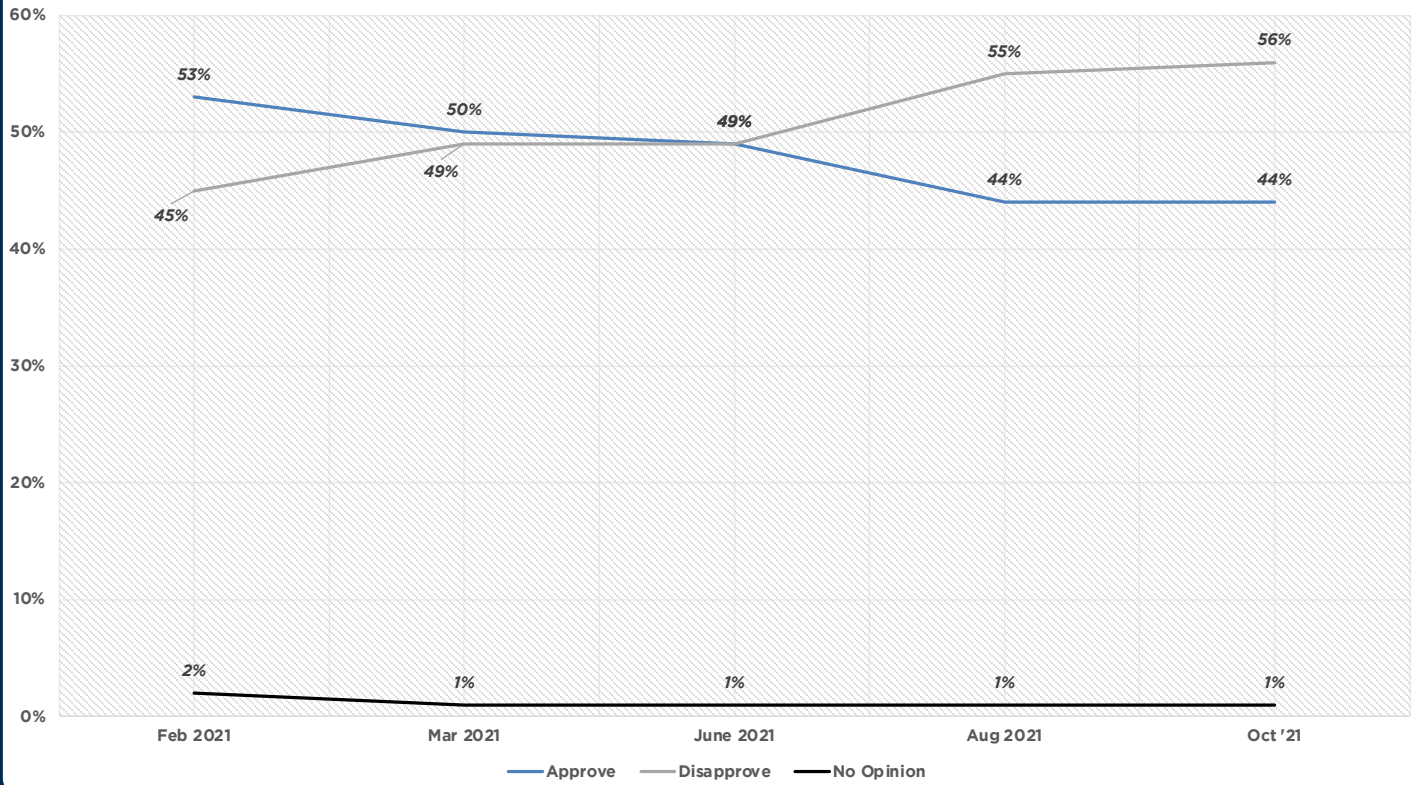
RIGHT TRACK VS WRONG TRACK



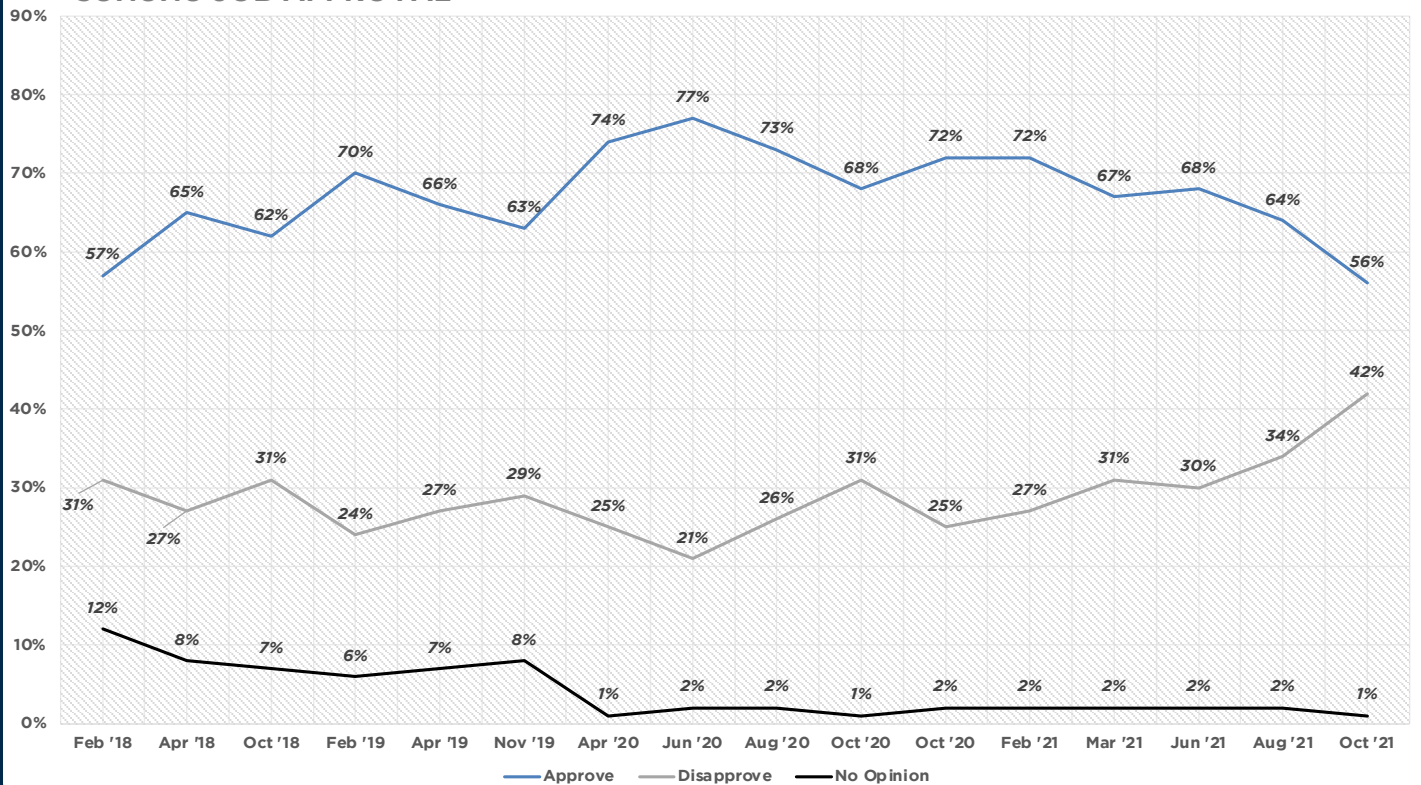
GENERIC CONGRESSIONAL BALLOT



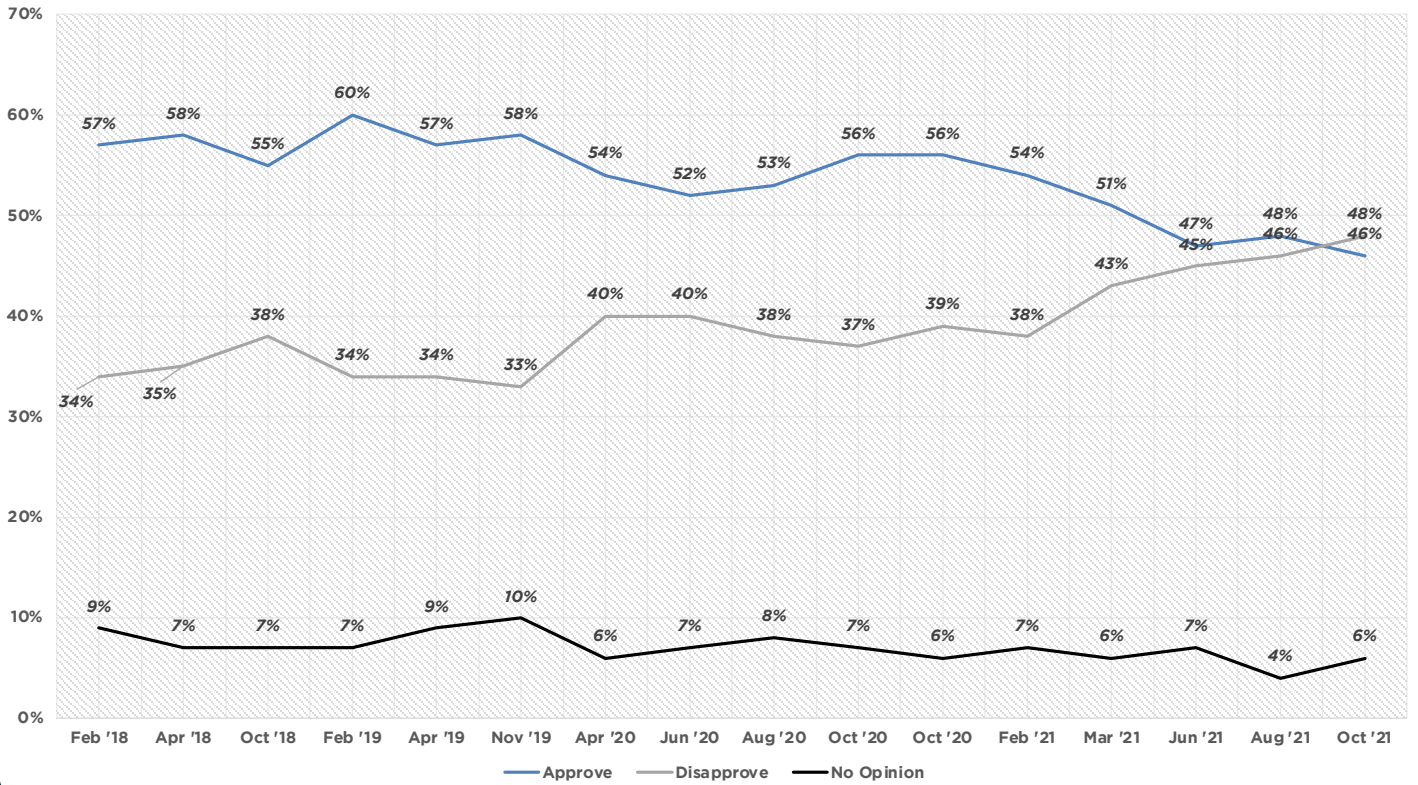
BIDEN JOB APPROVAL



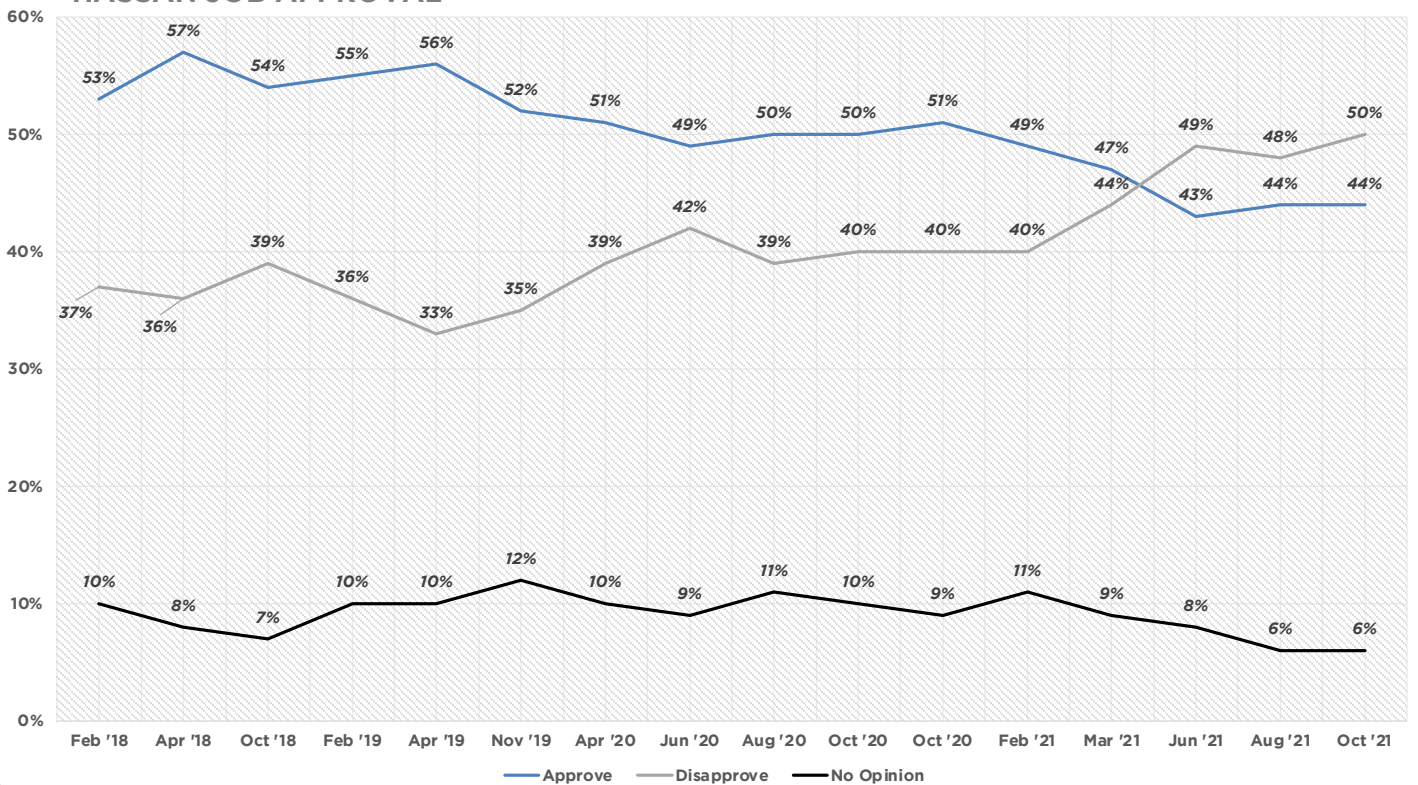
SUNUNU JOB APPROVAL



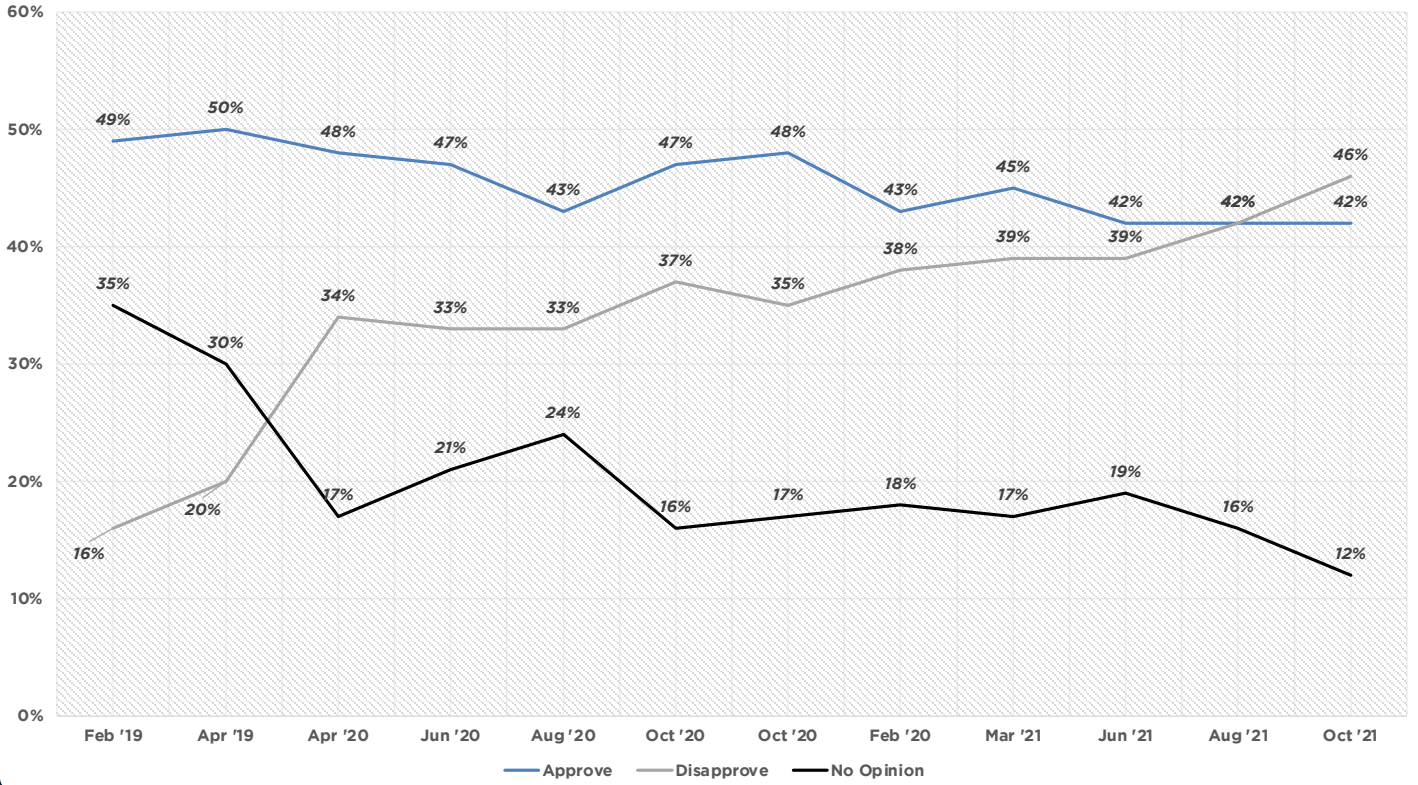
SHAHEEN JOB APPROVAL



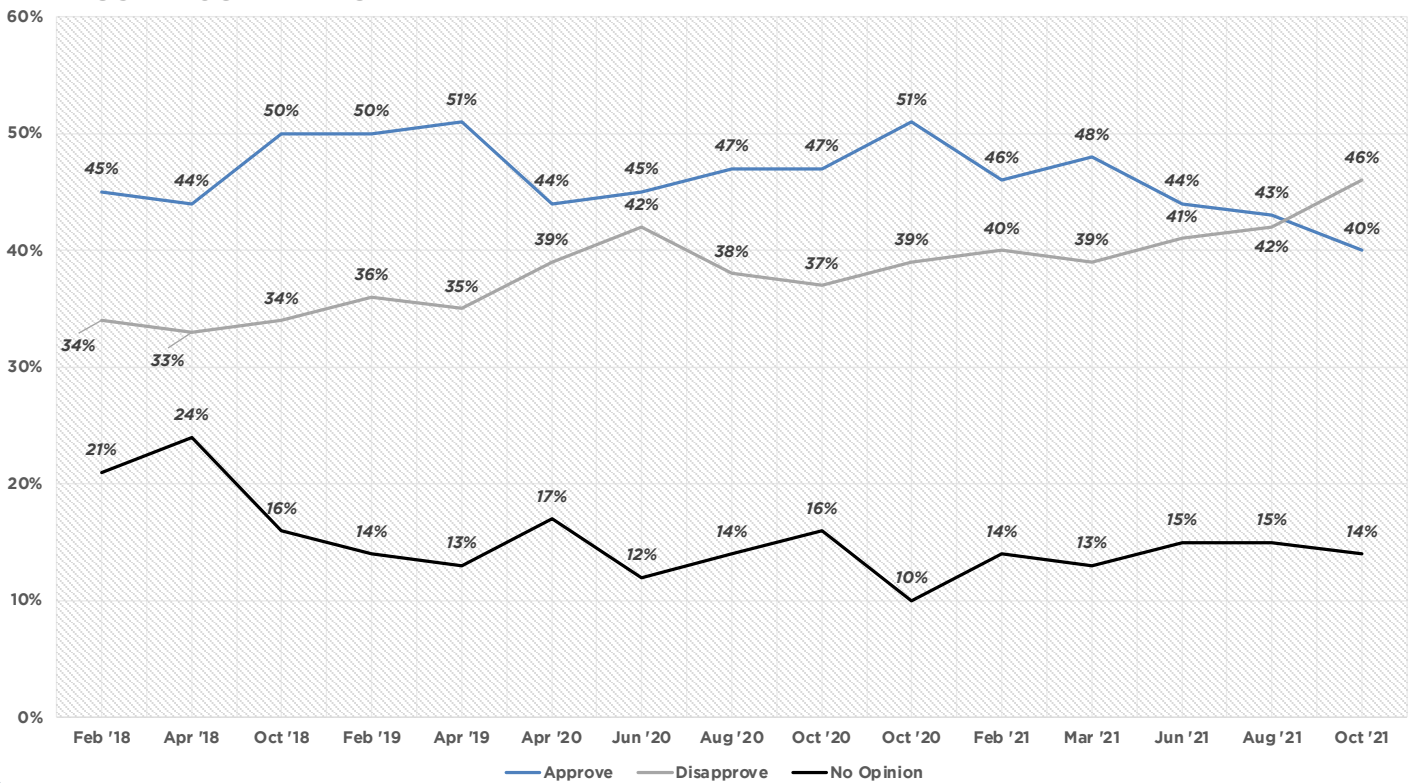
HASSAN JOB APPROVAL



PAPPAS JOB APPROVAL



KUSTER JOB APPROVAL



WEIGHTED MARGINALS

October 20-22, 2021

n = 1323

New Hampshire Registered Voters

MoE +/- 2.7%

Would you say that things in our country are heading in the right direction, or have things gotten off on the wrong track?			
		Frequency	Percent
	Right Track	277	21
	Wrong Track	899	68
	Unsure	148	11
	Total	1323	100

If the election for Congress were held today, for which candidate would you likely vote?			
		Frequency	Percent
	Democratic	564	43
	Republican	608	46
	Other	43	3
	Unsure	108	8
	Total	1323	100

Do you approve or disapprove of the way President Joe Biden is doing his job?			
		Frequency	Percent
	Strongly Approve	257	19
	Somewhat Approve	319	24
	Somewhat Disapprove	52	4
	Strongly Disapprove	688	52
	No Opinion	7	1
	Approve	576	44
	Disapprove	741	56
	No Opinion	7	1
	Total	1323	100

Do you approve or disapprove of the way Governor Chris Sununu is doing his job?			
		Frequency	Percent
	Strongly Approve	325	25
	Somewhat Approve	419	32
	Somewhat Disapprove	270	20
	Strongly Disapprove	289	22
	No Opinion	19	1
	Never Heard Of	1	0
	Approve	744	56
	Disapprove	559	42
	No Opinion	20	1
	Total	1323	100

Do you approve or disapprove of the way Senator Jeanne Shaheen is doing her job?			
		Frequency	Percent
	Strongly Approve	360	27
	Somewhat Approve	242	18
	Somewhat Disapprove	196	15
	Strongly Disapprove	442	33
	No Opinion	79	6
	Never Heard Of	4	0
	Approve	602	46
	Disapprove	638	48
	No Opinion	83	6
	Total	1323	100

Do you approve or disapprove of the way Senator Maggie Hassan is doing her job?			
		Frequency	Percent
	Strongly Approve	336	25
	Somewhat Approve	241	18
	Somewhat Disapprove	196	15
	Strongly Disapprove	466	35
	No Opinion	80	6
	Never Heard Of	5	0
	Approve	577	44
	Disapprove	662	50
	No Opinion	84	6
	Total	1323	100

Do you approve or disapprove of the way Congressman Chris Pappas is doing his job?			
		Frequency	Percent
	Strongly Approve	160	23
	Somewhat Approve	130	19
	Somewhat Disapprove	84	12
	Strongly Disapprove	237	34
	No Opinion	79	11
	Never Heard Of	3	0
	Approve	290	42
	Disapprove	321	46
	No Opinion	82	12
	Total	692	100

Do you approve or disapprove of the way Congresswoman Annie Kuster is doing her job?			
		Frequency	Percent
	Strongly Approve	146	23
	Somewhat Approve	105	17
	Somewhat Disapprove	70	11
	Strongly Disapprove	221	35
	No Opinion	82	13
	Never Heard Of	8	1
	Approve	251	40
	Disapprove	291	46
	No Opinion	89	14
	Total	631	100

Do you approve or disapprove of Governor Sununu's handling of COVID issues?			
		Frequency	Percent
	Strongly Approve	440	33
	Somewhat Approve	493	37
	Somewhat Disapprove	232	18
	Strongly Disapprove	127	10
	Unsure	31	2
	Approve	933	71
	Disapprove	359	27
	Unsure	31	2
	Total	1323	100

Would you support or oppose a New Hampshire vaccination mandate?			
		Frequency	Percent
	Strongly Support	458	35
	Somewhat Support	153	12
	Somewhat Oppose	114	9
	Strongly Oppose	576	44
	Unsure	22	2
	Support	611	46
	Oppose	690	52
	Unsure	22	2
	Total	1323	100

Do you plan to get a COVID booster shot when available?			
		Frequency	Percent
	ASAP	608	46
	When Convenient	176	13
	No	398	30
	No Answer	141	11
	Total	1323	100

Congress is currently battling over a \$1 trillion infrastructure spending bill and an additional \$3.5 trillion spending bill dubbed the "Build Back Better Act". Do you believe Congress should pass these bills?			
		Frequency	Percent
	Pass \$1T	205	16
	Pass \$3.5T	90	7
	Pass Both	397	30
	Pass Neither	533	40
	Unsure	98	7
	Total	1323	100

Congress is currently battling over a \$1 trillion infrastructure spending bill and an additional \$3.5 trillion spending bill dubbed the "Build Back Better Act". Do you believe Congress should pass these bills?

		Frequency	Percent
	Pass \$1T	205	16
	Pass \$3.5T	90	7
	Pass Both	397	30
	Pass Neither	533	40
	Unsure	98	7
	Total	1323	100

How worried are you about inflation?

		Frequency	Percent
	Extremely	374	28
	Very	437	33
	Somewhat	408	31
	Not at All	104	8
	Extremely/Very	811	61
	Somewhat/Not at All	512	39
	Total	1323	100

If the election for US Senate were today, and the candidates were Maggie Hassan and Chris Sununu, for whom would you vote?

		Frequency	Percent
	Hassan	541	41
	Sununu	604	46
	Someone Else	120	9
	Unsure	58	4
	Total	1323	100

WEIGHTED TABLES

October 20-22, 2021

n = 1323

New Hampshire Registered Voters

MoE +/- 2.7%

Would you say that things in our country are heading in the right direction, or have things gotten off on the wrong track?				
		Right Track	Wrong Track	Unsure
Gender	Female	27%	61%	12%
	Male	14%	75%	10%
Age	18-34	18%	73%	9%
	35-54	18%	70%	12%
	55-64	23%	67%	10%
	65+	24%	63%	12%
Education	High School or Less	15%	76%	9%
	Some College/Associates Degree	18%	72%	10%
	College Graduate	22%	67%	12%
	Graduate/Professional School	29%	58%	13%
Ideology	Very Conservative	1%	99%	1%
	Somewhat Conservative	4%	90%	6%
	Moderate	8%	83%	9%
	Somewhat Liberal	49%	32%	19%
	Very Liberal	41%	39%	20%
Party Registration	Democratic	44%	35%	20%
	Republican	1%	95%	4%
	Undeclared	17%	74%	9%
Party Identification	Democratic	44%	35%	21%
	Republican	1%	96%	3%
	Swing	8%	87%	6%
Congressional District	CD-1	23%	69%	8%
	CD-2	18%	67%	15%
Region	North Country/Lakes	19%	75%	6%
	Monadnock/Dartmouth	13%	66%	21%
	Merrimack Valley	22%	67%	11%
	Seacoast/Border	23%	67%	10%
Total		21%	68%	11%

If the election for Congress were held today, for which candidate would you likely vote?					
		Democratic	Republican	Other	Unsure
Gender	Female	51%	39%	1%	8%
	Male	33%	53%	6%	8%
Age	18-34	37%	42%	12%	10%
	35-54	38%	50%	3%	10%
	55-64	43%	49%	1%	8%
	65+	52%	42%	2%	5%
Education	High School or Less	31%	60%	4%	6%
	Some College/Associates Degree	36%	50%	4%	10%
	College Graduate	47%	42%	3%	8%
	Graduate/Professional School	58%	35%	2%	6%
Ideology	Very Conservative	1%	94%	1%	4%
	Somewhat Conservative	9%	80%	2%	9%
	Moderate	26%	43%	11%	19%
	Somewhat Liberal	86%	7%	1%	7%
	Very Liberal	95%	3%	2%	1%
Party Registration	Democratic	89%	4%	2%	5%
	Republican	3%	89%	2%	6%
	Undeclared	35%	45%	5%	14%
Party Identification	Democratic	89%	4%	2%	5%
	Republican	2%	88%	2%	7%
	Swing	18%	37%	15%	30%
Congressional District	CD-1	41%	48%	4%	7%
	CD-2	45%	44%	3%	9%
Region	North Country/Lakes	35%	61%	1%	4%
	Monadnock/Dartmouth	45%	39%	2%	14%
	Merrimack Valley	42%	46%	3%	8%
	Seacoast/Border	45%	43%	4%	8%
Total		43%	46%	3%	8%

Do you approve or disapprove of the way President Joe Biden is doing his job?				
		Approve	Disapprove	No Opinion
Gender	Female	53%	47%	0%
	Male	33%	66%	1%
Age	18-34	35%	64%	1%
	35-54	38%	62%	0%
	55-64	45%	55%	0%
	65+	54%	45%	0%
Education	High School or Less	34%	66%	
	Some College/Associates Degree	37%	63%	0%
	College Graduate	46%	52%	1%
	Graduate/Professional School	57%	42%	0%
Ideology	Very Conservative	3%	97%	
	Somewhat Conservative	11%	88%	1%
	Moderate	29%	69%	2%
	Somewhat Liberal	86%	14%	0%
	Very Liberal	90%	10%	
Party Registration	Democratic	87%	13%	0%
	Republican	5%	95%	0%
	Undeclared	38%	61%	1%
Party Identification	Democratic	88%	11%	1%
	Republican	5%	95%	0%
	Swing	24%	76%	
Congressional District	CD-1	42%	58%	1%
	CD-2	45%	54%	0%
Region	North Country/Lakes	35%	65%	1%
	Monadnock/Dartmouth	44%	56%	
	Merrimack Valley	43%	57%	0%
	Seacoast/Border	46%	53%	1%
Total		43%	56%	1%

Do you approve or disapprove of the way President Joe Biden is doing his job?						
		Strongly Approve	Somewhat Approve	Somewhat Disapprove	Strongly Disapprove	No Opinion
Gender	Female	25%	28%	3%	44%	0%
	Male	13%	20%	5%	61%	1%
Age	18-34	5%	30%	5%	59%	1%
	35-54	14%	24%	5%	57%	0%
	55-64	20%	25%	4%	51%	0%
	65+	34%	21%	2%	43%	0%
Education	High School or Less	18%	16%	1%	65%	
	Some College/Associates Degree	16%	21%	3%	60%	0%
	College Graduate	21%	26%	6%	46%	1%
	Graduate/Professional School	25%	33%	4%	38%	0%
Ideology	Very Conservative	2%	2%	1%	96%	
	Somewhat Conservative	3%	8%	4%	84%	1%
	Moderate	11%	18%	6%	63%	2%
	Somewhat Liberal	40%	46%	4%	9%	0%
	Very Liberal	44%	47%	3%	7%	
Party Registration	Democratic	41%	46%	4%	8%	0%
	Republican	1%	4%	2%	93%	0%
	Undeclared	16%	22%	6%	56%	1%
Party Identification	Democratic	41%	47%	4%	7%	1%
	Republican	1%	4%	2%	93%	0%
	Swing	5%	19%	12%	64%	
Congressional District	CD-1	20%	22%	3%	54%	1%
	CD-2	19%	26%	5%	50%	0%
Region	North Country/Lakes	20%	15%	3%	62%	1%
	Monadnock/Dartmouth	18%	26%	6%	50%	
	Merrimack Valley	19%	24%	5%	51%	0%
	Seacoast/Border	20%	26%	2%	51%	1%
Total		19%	24%	4%	52%	1%

Do you approve or disapprove of the way Governor Chris Sununu is doing his job?				
		Approve	Disapprove	No Opinion
Gender	Female	49%	50%	1%
	Male	64%	34%	2%
Age	18-34	49%	48%	2%
	35-54	59%	39%	3%
	55-64	60%	40%	0%
	65+	54%	45%	1%
Education	High School or Less	65%	34%	1%
	Some College/Associates Degree	61%	37%	2%
	College Graduate	56%	42%	2%
	Graduate/Professional School	43%	56%	1%
Ideology	Very Conservative	85%	14%	1%
	Somewhat Conservative	81%	18%	1%
	Moderate	57%	40%	4%
	Somewhat Liberal	34%	64%	2%
	Very Liberal	16%	83%	1%
Party Registration	Democratic	25%	73%	2%
	Republican	83%	16%	1%
	Undeclared	61%	37%	2%
Party Identification	Democratic	27%	71%	2%
	Republican	83%	16%	1%
	Swing	58%	36%	6%
Congressional District	CD-1	60%	38%	2%
	CD-2	52%	47%	1%
Region	North Country/Lakes	74%	26%	
	Monadnock/Dartmouth	45%	54%	1%
	Merrimack Valley	58%	40%	2%
	Seacoast/Border	53%	46%	1%
Total		56%	42%	1%

Do you approve or disapprove of the way Governor Chris Sununu is doing his job?							
		Strongly Approve	Somewhat Approve	Somewhat Disapprove	Strongly Disapprove	No Opinion	Never Heard Of
Gender	Female	20%	29%	23%	27%	1%	0%
	Male	30%	34%	18%	16%	2%	
Age	18-34	14%	35%	20%	28%	2%	
	35-54	26%	33%	18%	20%	3%	
	55-64	26%	33%	22%	18%	0%	
	65+	27%	27%	21%	24%	1%	0%
Education	High School or Less	27%	37%	18%	17%	1%	
	Some College/Associates Degree	28%	33%	20%	17%	2%	
	College Graduate	24%	32%	19%	23%	1%	0%
	Graduate/Professional School	18%	25%	24%	32%	1%	
Ideology	Very Conservative	47%	39%	9%	6%	1%	
	Somewhat Conservative	43%	38%	13%	5%	1%	
	Moderate	21%	36%	15%	25%	4%	
	Somewhat Liberal	6%	27%	30%	35%	2%	
	Very Liberal	3%	14%	37%	45%	1%	1%
Party Registration	Democratic	4%	21%	31%	42%	2%	0%
	Republican	45%	38%	9%	7%	1%	
	Undeclared	25%	36%	21%	16%	2%	
Party Identification	Democratic	5%	23%	33%	38%	1%	0%
	Republican	44%	39%	9%	7%	1%	
	Swing	22%	37%	14%	22%	6%	
Congressional District	CD-1	29%	31%	19%	19%	2%	0%
	CD-2	20%	32%	22%	25%	1%	
Region	North Country/Lakes	33%	41%	15%	11%		
	Monadnock/Dartmouth	20%	25%	26%	28%	1%	
	Merrimack Valley	25%	32%	19%	22%	2%	
	Seacoast/Border	23%	30%	22%	23%	1%	0%
Total		25%	32%	20%	22%	1%	0%

Do you approve or disapprove of the way Senator Jeanne Shaheen is doing her job?				
		Approve	Disapprove	No Opinion
Gender	Female	54%	39%	7%
	Male	37%	58%	6%
Age	18-34	27%	55%	18%
	35-54	43%	52%	5%
	55-64	48%	48%	3%
	65+	57%	40%	3%
Education	High School or Less	33%	62%	5%
	Some College/Associates Degree	41%	51%	8%
	College Graduate	47%	47%	5%
	Graduate/Professional School	61%	34%	5%
Ideology	Very Conservative	7%	91%	3%
	Somewhat Conservative	18%	75%	6%
	Moderate	33%	56%	12%
	Somewhat Liberal	85%	11%	4%
	Very Liberal	84%	10%	6%
Party Registration	Democratic	83%	10%	7%
	Republican	12%	84%	4%
	Undeclared	41%	51%	7%
Party Identification	Democratic	84%	10%	7%
	Republican	11%	83%	6%
	Swing	35%	58%	8%
Congressional District	CD-1	45%	50%	5%
	CD-2	46%	47%	8%
Region	North Country/Lakes	38%	59%	3%
	Monadnock/Dartmouth	40%	47%	13%
	Merrimack Valley	46%	48%	6%
	Seacoast/Border	49%	46%	5%
Total		46%	48%	6%

Do you approve or disapprove of the way Senator Jeanne Shaheen is doing her job?							
		Strongly Approve	Somewhat Approve	Somewhat Disapprove	Strongly Disapprove	No Opinion	Never Heard Of
Gender	Female	35%	19%	13%	26%	7%	1%
	Male	19%	17%	17%	41%	6%	
Age	18-34	16%	11%	19%	35%	16%	2%
	35-54	20%	24%	15%	36%	5%	
	55-64	29%	19%	12%	37%	3%	
	65+	42%	15%	14%	26%	3%	
Education	High School or Less	14%	19%	18%	44%	5%	
	Some College/Associates Degree	23%	18%	15%	36%	7%	1%
	College Graduate	31%	16%	16%	31%	5%	
	Graduate/Professional School	39%	21%	9%	25%	5%	
Ideology	Very Conservative	1%	6%	20%	71%	3%	
	Somewhat Conservative	5%	14%	25%	51%	6%	
	Moderate	13%	20%	17%	38%	12%	
	Somewhat Liberal	63%	22%	4%	6%	4%	
	Very Liberal	52%	32%	7%	3%	5%	2%
Party Registration	Democratic	56%	27%	5%	6%	6%	1%
	Republican	2%	10%	22%	61%	4%	
	Undeclared	22%	19%	18%	34%	7%	
Party Identification	Democratic	57%	27%	5%	5%	6%	1%
	Republican	2%	9%	24%	59%	6%	
	Swing	9%	25%	15%	42%	8%	
Congressional District	1	28%	17%	16%	34%	5%	
	2	26%	19%	14%	33%	7%	1%
Region	North Country/Lakes	25%	13%	17%	43%	3%	
	Monadnock/Dartmouth	24%	16%	14%	33%	13%	
	Merrimack Valley	27%	19%	17%	31%	6%	
	Seacoast/Border	29%	19%	12%	33%	5%	1%
Total		27%	18%	15%	33%	6%	0%

Do you approve or disapprove of the way Senator Maggie Hassan is doing her job?				
		Approve	Disapprove	No Opinion
Gender	Female	52%	42%	6%
	Male	34%	59%	7%
Age	18-34	34%	53%	14%
	35-54	38%	55%	7%
	55-64	45%	51%	3%
	65+	55%	41%	4%
Education	High School or Less	29%	63%	8%
	Some College/Associates Degree	40%	53%	7%
	College Graduate	46%	49%	5%
	Graduate/Professional School	57%	38%	6%
Ideology	Very Conservative	8%	90%	3%
	Somewhat Conservative	16%	79%	5%
	Moderate	29%	58%	13%
	Somewhat Liberal	83%	11%	5%
	Very Liberal	83%	12%	6%
Party Registration	Democratic	81%	11%	7%
	Republican	9%	86%	5%
	Undeclared	40%	53%	6%
Party Identification	Democratic	83%	10%	7%
	Republican	9%	85%	5%
	Swing	27%	64%	8%
Congressional District	CD-1	44%	52%	5%
	CD-2	44%	48%	8%
Region	North Country/Lakes	35%	63%	2%
	Monadnock/Dartmouth	42%	52%	7%
	Merrimack Valley	43%	49%	8%
	Seacoast/Border	47%	47%	6%
Total		44%	50%	6%

Do you approve or disapprove of the way Senator Maggie Hassan is doing her job?							
		Strongly Approve	Somewhat Approve	Somewhat Disapprove	Strongly Disapprove	No Opinion	Never Heard Of
Gender	Female	33%	20%	13%	29%	5%	1%
	Male	17%	17%	17%	42%	7%	
Age	18-34	12%	22%	19%	33%	12%	2%
	35-54	19%	19%	17%	37%	7%	0%
	55-64	28%	17%	12%	40%	3%	
	65+	39%	16%	13%	29%	4%	
Education	High School or Less	15%	14%	24%	39%	8%	
	Some College/Associates Degree	22%	18%	13%	40%	6%	1%
	College Graduate	27%	20%	14%	34%	5%	0%
	Graduate/Professional School	36%	21%	11%	27%	6%	
Ideology	Very Conservative	2%	6%	20%	70%	3%	
	Somewhat Conservative	5%	11%	21%	57%	5%	
	Moderate	13%	16%	18%	40%	13%	0%
	Somewhat Liberal	56%	27%	5%	6%	5%	
	Very Liberal	51%	32%	9%	2%	4%	2%
Party Registration	Democratic	53%	28%	7%	5%	7%	1%
	Republican	2%	7%	22%	64%	5%	0%
	Undeclared	20%	20%	16%	38%	6%	
Party Identification	Democratic	53%	29%	6%	5%	6%	1%
	Republican	2%	8%	23%	62%	5%	0%
	Swing	8%	19%	18%	47%	8%	
Congressional District	CD-1	26%	17%	15%	36%	5%	
	CD-2	24%	19%	14%	34%	7%	1%
Region	North Country/Lakes	26%	9%	17%	45%	2%	
	Monadnock/Dartmouth	24%	18%	15%	37%	7%	
	Merrimack Valley	25%	18%	16%	33%	7%	0%
	Seacoast/Border	26%	21%	13%	34%	6%	1%
Total		25%	18%	15%	35%	6%	0%

Do you approve or disapprove of the way Congressman Chris Pappas is doing his job?				
		Approve	Disapprove	No Opinion
Gender	Female	49%	37%	14%
	Male	35%	55%	10%
Age	18-34	41%	40%	19%
	35-54	37%	50%	13%
	55-64	42%	47%	11%
	65+	48%	45%	7%
Education	High School or Less	33%	50%	17%
	Some College/Associates Degree	36%	54%	10%
	College Graduate	47%	42%	12%
	Graduate/Professional School	53%	37%	10%
Ideology	Very Conservative	11%	79%	10%
	Somewhat Conservative	15%	74%	11%
	Moderate	29%	56%	15%
	Somewhat Liberal	81%	9%	10%
	Very Liberal	80%	4%	16%
Party Registration	Democratic	78%	9%	13%
	Republican	11%	78%	11%
	Undeclared	39%	50%	11%
Party Identification	Democratic	79%	9%	12%
	Republican	10%	78%	12%
	Swing	32%	57%	11%
Region	North Country/Lakes	34%	52%	15%
	Monadnock/Dartmouth	13%	63%	25%
	Merrimack Valley	43%	45%	12%
	Seacoast/Border	44%	45%	11%
Total		42%	46%	12%

Do you approve or disapprove of the way Congressman Chris Pappas is doing his job?							
		Strongly Approve	Somewhat Approve	Somewhat Disapprove	Strongly Disapprove	No Opinion	Never Heard Of
Gender	Female	31%	18%	9%	28%	13%	1%
	Male	15%	20%	15%	40%	10%	
Age	18-34	22%	20%	9%	31%	19%	
	35-54	17%	20%	12%	38%	13%	
	55-64	24%	17%	12%	35%	10%	2%
	65+	30%	18%	14%	31%	7%	
Education	High School or Less	11%	22%	11%	39%	14%	2%
	Some College/Associates Degree	19%	17%	14%	40%	10%	
	College Graduate	29%	18%	12%	30%	12%	
	Graduate/Professional School	33%	19%	10%	27%	10%	
Ideology	Very Conservative	4%	7%	15%	64%	10%	
	Somewhat Conservative	4%	12%	21%	53%	11%	
	Moderate	7%	22%	12%	43%	15%	
	Somewhat Liberal	54%	26%	4%	5%	10%	
	Very Liberal	49%	32%	2%	1%	12%	4%
Party Registration	Democratic	54%	24%	4%	5%	13%	
	Republican	2%	9%	20%	58%	10%	1%
	Undeclared	15%	24%	12%	38%	11%	
Party Identification	Democratic	50%	29%	4%	5%	12%	
	Republican	2%	9%	18%	60%	11%	1%
	Swing	8%	25%	21%	35%	10%	
Region	North Country/Lakes	17%	16%	12%	40%	15%	
	Monadnock/Dartmouth	13%			63%	25%	
	Merrimack Valley	23%	20%	10%	34%	12%	
	Seacoast/Border	25%	19%	13%	32%	10%	1%
Total		23%	19%	12%	34%	12%	0%

Do you approve or disapprove of the way Congresswoman Annie Kuster is doing her job?				
		Approve	Disapprove	No Opinion
Gender	Female	45%	38%	17%
	Male	34%	56%	10%
Age	18-34	30%	45%	25%
	35-54	34%	53%	13%
	55-64	38%	48%	14%
	65+	56%	35%	9%
Education	High School or Less	17%	72%	11%
	Some College/Associates Degree	35%	46%	19%
	College Graduate	41%	44%	15%
	Graduate/Professional School	59%	34%	8%
Ideology	Very Conservative	5%	90%	4%
	Somewhat Conservative	14%	74%	13%
	Moderate	23%	63%	14%
	Somewhat Liberal	73%	8%	19%
	Very Liberal	78%	5%	18%
Party Registration	Democratic	74%	8%	19%
	Republican	6%	83%	11%
	Undeclared	36%	52%	12%
Party Identification	Democratic	74%	8%	18%
	Republican	9%	80%	11%
	Swing	16%	74%	10%
Region	North Country/Lakes	50%	46%	4%
	Monadnock/Dartmouth	40%	45%	15%
	Merrimack Valley	39%	49%	12%
	Seacoast/Border	39%	40%	21%
Total		40%	46%	14%

Do you approve or disapprove of the way Congresswoman Annie Kuster is doing her job?

		Strongly Approve	Somewhat Approve	Somewhat Disapprove	Strongly Disapprove	No Opinion	Never Heard Of
Gender	Female	27%	18%	9%	29%	16%	2%
	Male	18%	15%	14%	42%	10%	1%
Age	18-34	9%	21%	5%	41%	20%	5%
	35-54	19%	14%	16%	37%	13%	1%
	55-64	22%	16%	11%	37%	14%	
	65+	39%	17%	9%	26%	8%	1%
Education	High School or Less	8%	9%	16%	56%	11%	
	Some College/Associates Degree	21%	14%	11%	35%	16%	3%
	College Graduate	24%	17%	11%	33%	15%	1%
	Graduate/Professional School	34%	25%	8%	25%	7%	1%
Ideology	Very Conservative		5%	14%	76%	4%	
	Somewhat Conservative	5%	9%	17%	56%	12%	1%
	Moderate	11%	11%	18%	46%	13%	1%
	Somewhat Liberal	45%	28%	3%	5%	19%	
	Very Liberal	50%	28%	4%	1%	13%	5%
Party Registration	Democratic	46%	28%	4%	4%	17%	2%
	Republican	1%	5%	14%	69%	11%	1%
	Undeclared	20%	16%	16%	36%	11%	1%
Party Identification	Democratic	46%	28%	4%	4%	17%	1%
	Republican	2%	7%	15%	65%	10%	1%
	Swing	8%	7%	27%	47%	8%	2%
Region	North Country/Lakes	39%	11%		46%	4%	
	Monadnock/Dartmouth	25%	15%	9%	36%	14%	1%
	Merrimack Valley	22%	17%	15%	34%	11%	1%
	Seacoast/Border	20%	18%	6%	34%	19%	3%
Total		23%	17%	11%	35%	13%	1%

Do you approve or disapprove of Governor Sununu's handling of COVID issues?				
		Approve	Disapprove	Unsure
Gender	Female	69%	30%	1%
	Male	73%	24%	3%
Age	18-34	57%	38%	5%
	35-54	71%	27%	2%
	55-64	74%	25%	1%
	65+	75%	23%	2%
Education	High School or Less	78%	19%	2%
	Some College/Associates Degree	75%	22%	3%
	College Graduate	67%	30%	3%
	Graduate/Professional School	63%	36%	1%
Ideology	Very Conservative	85%	14%	1%
	Somewhat Conservative	84%	14%	2%
	Moderate	67%	31%	2%
	Somewhat Liberal	65%	32%	3%
	Very Liberal	44%	53%	3%
Party Registration	Democratic	56%	41%	3%
	Republican	83%	15%	2%
	Undeclared	73%	25%	2%
Party Identification	Democratic	58%	39%	3%
	Republican	83%	15%	2%
	Swing	68%	32%	
Congressional District	CD-1	76%	21%	3%
	CD-2	65%	33%	2%
Region	North Country/Lakes	79%	20%	1%
	Monadnock/Dartmouth	56%	40%	4%
	Merrimack Valley	72%	26%	1%
	Seacoast/Border	70%	27%	3%
Total		70%	27%	2%

Do you approve or disapprove of Governor Sununu's handling of COVID issues?						
		Strongly Approve	Somewhat Approve	Somewhat Disapprove	Strongly Disapprove	Unsure
Gender	Female	30%	39%	20%	10%	1%
	Male	37%	36%	15%	9%	3%
Age	18-34	17%	41%	22%	15%	5%
	35-54	36%	35%	18%	9%	2%
	55-64	38%	36%	16%	8%	1%
	65+	36%	39%	15%	8%	2%
Education	High School or Less	42%	37%	12%	7%	2%
	Some College/Associates Degree	37%	38%	17%	5%	3%
	College Graduate	32%	35%	18%	12%	3%
	Graduate/Professional School	23%	39%	21%	15%	1%
Ideology	Very Conservative	52%	34%	8%	6%	1%
	Somewhat Conservative	49%	35%	9%	5%	2%
	Moderate	31%	36%	24%	7%	2%
	Somewhat Liberal	20%	44%	21%	11%	3%
	Very Liberal	9%	35%	31%	23%	3%
Party Registration	Democratic	15%	41%	26%	15%	3%
	Republican	48%	36%	8%	7%	2%
	Undeclared	38%	35%	18%	7%	2%
Party Identification	Democratic	17%	41%	25%	14%	3%
	Republican	48%	35%	9%	6%	2%
	Swing	36%	32%	28%	4%	
Congressional District	CD-1	39%	37%	16%	6%	3%
	CD-2	27%	38%	19%	14%	2%
Region	North Country/Lakes	43%	36%	12%	8%	1%
	Monadnock/Dartmouth	26%	31%	26%	14%	4%
	Merrimack Valley	34%	38%	15%	11%	1%
	Seacoast/Border	31%	39%	19%	8%	3%
Total		33%	37%	18%	10%	2%

Would you support or oppose a New Hampshire vaccination mandate?				
		Support	Oppose	Unsure
Gender	Female	52%	46%	2%
	Male	40%	59%	1%
Age	18-34	42%	56%	2%
	35-54	38%	59%	3%
	55-64	47%	52%	1%
	65+	58%	41%	1%
Education	High School or Less	33%	65%	2%
	Some College/Associates Degree	38%	60%	2%
	College Graduate	52%	46%	2%
	Graduate/Professional School	61%	38%	2%
Ideology	Very Conservative	7%	93%	1%
	Somewhat Conservative	17%	82%	1%
	Moderate	35%	61%	4%
	Somewhat Liberal	82%	17%	1%
	Very Liberal	94%	5%	2%
Party Registration	Democratic	86%	12%	2%
	Republican	11%	88%	1%
	Undeclared	41%	57%	2%
Party Identification	Democratic	85%	13%	2%
	Republican	10%	89%	1%
	Swing	37%	57%	6%
Congressional District	CD-1	44%	54%	3%
	CD-2	49%	50%	1%
Region	North Country/Lakes	36%	63%	1%
	Monadnock/Dartmouth	56%	44%	
	Merrimack Valley	44%	54%	1%
	Seacoast/Border	48%	49%	3%
Total		46%	52%	2%

Would you support or oppose a New Hampshire vaccination mandate?						
		Strongly Support	Somewhat Support	Somewhat Oppose	Strongly Oppose	Unsure
Gender	Female	40%	12%	7%	39%	2%
	Male	29%	11%	10%	49%	1%
Age	18-34	31%	11%	7%	49%	2%
	35-54	27%	11%	10%	50%	3%
	55-64	34%	13%	9%	43%	1%
	65+	47%	11%	8%	33%	1%
Education	High School or Less	24%	10%	10%	55%	2%
	Some College/Associates Degree	29%	9%	9%	52%	2%
	College Graduate	40%	12%	8%	38%	2%
	Graduate/Professional School	44%	16%	9%	29%	2%
Ideology	Very Conservative	3%	4%	4%	89%	1%
	Somewhat Conservative	11%	7%	15%	67%	1%
	Moderate	21%	14%	7%	54%	4%
	Somewhat Liberal	64%	18%	9%	8%	1%
	Very Liberal	79%	14%	4%	1%	2%
Party Registration	Democratic	68%	17%	5%	7%	2%
	Republican	6%	5%	9%	79%	1%
	Undeclared	28%	13%	11%	46%	2%
Party Identification	Democratic	67%	18%	7%	6%	2%
	Republican	5%	5%	10%	79%	1%
	Swing	22%	15%	10%	48%	6%
Congressional District	1	33%	11%	10%	44%	3%
	2	37%	12%	7%	43%	1%
Region	North Country/Lakes	24%	13%	15%	48%	1%
	Monadnock/Dartmouth	45%	11%	5%	39%	
	Merrimack Valley	33%	12%	8%	46%	1%
	Seacoast/Border	37%	11%	9%	41%	3%
Total		35%	12%	9%	44%	2%

Do you plan to get a COVID booster shot when available?					
		ASAP	When Convenient	No	No Answer
Gender	Female	50%	11%	28%	10%
	Male	41%	15%	32%	11%
Age	18-34	31%	17%	44%	7%
	35-54	39%	15%	35%	11%
	55-64	48%	12%	29%	11%
	65+	62%	10%	17%	11%
Education	High School or Less	30%	17%	39%	14%
	Some College/Associates Degree	39%	11%	37%	13%
	College Graduate	52%	15%	24%	9%
	Graduate/Professional School	62%	12%	20%	6%
Ideology	Very Conservative	11%	7%	64%	17%
	Somewhat Conservative	26%	15%	45%	14%
	Moderate	36%	10%	35%	20%
	Somewhat Liberal	76%	16%	6%	2%
	Very Liberal	79%	16%	3%	2%
Party Registration	Democratic	76%	15%	5%	4%
	Republican	16%	11%	57%	16%
	Undeclared	45%	14%	28%	13%
Party Identification	Democratic	77%	15%	5%	3%
	Republican	17%	11%	55%	16%
	Swing	41%	14%	25%	21%
Congressional District	CD-1	45%	13%	30%	12%
	CD-2	47%	14%	30%	10%
Region	North Country/Lakes	44%	7%	39%	11%
	Monadnock/Dartmouth	49%	15%	26%	10%
	Merrimack Valley	45%	13%	30%	12%
	Seacoast/Border	47%	15%	29%	9%
Total		46%	13%	30%	11%

Congress is currently battling over a \$1 trillion infrastructure spending bill and an additional \$3.5 trillion spending bill dubbed the "Build Back Better Act". Do you believe Congress should pass these bills?						
		Pass \$1T	Pass \$3.5T	Pass Both	Pass Neither	Unsure
Gender	Female	11%	7%	36%	37%	10%
	Male	20%	7%	24%	44%	5%
Age	18-34	14%	5%	30%	36%	14%
	35-54	15%	6%	27%	45%	7%
	55-64	13%	8%	29%	43%	7%
	65+	19%	8%	36%	34%	4%
Education	High School or Less	14%	8%	21%	51%	6%
	Some College/Associates Degree	15%	4%	25%	44%	12%
	College Graduate	16%	7%	33%	38%	5%
	Graduate/Professional School	17%	9%	42%	29%	4%
Ideology	Very Conservative	15%		2%	83%	1%
	Somewhat Conservative	23%	1%	4%	65%	7%
	Moderate	17%	7%	18%	43%	14%
	Somewhat Liberal	14%	13%	58%	8%	7%
	Very Liberal	3%	13%	76%	2%	7%
Party Registration	Democratic	11%	12%	62%	5%	9%
	Republican	16%	1%	2%	76%	5%
	Undeclared	20%	7%	26%	40%	8%
Party Identification	Democratic	12%	13%	62%	5%	8%
	Republican	17%	1%	2%	74%	6%
	Swing	24%	6%	15%	42%	13%
Congressional District	CD-1	16%	7%	28%	41%	8%
	CD-2	15%	7%	33%	39%	7%
Region	North Country/Lakes	14%	7%	23%	50%	6%
	Monadnock/Dartmouth	9%	7%	35%	39%	11%
	Merrimack Valley	15%	8%	28%	42%	8%
	Seacoast/Border	18%	6%	33%	37%	7%
Total		16%	7%	30%	40%	7%

How worried are you about inflation?			
		Extremely/Very	Somewhat/ Not at All
Gender	Female	57%	43%
	Male	66%	34%
Age	18-34	66%	34%
	35-54	64%	36%
	55-64	62%	38%
	65+	55%	45%
Education	High School or Less	71%	29%
	Some College/Associates Degree	69%	31%
	College Graduate	55%	45%
	Graduate/Professional School	50%	50%
Ideology	Very Conservative	95%	5%
	Somewhat Conservative	84%	16%
	Moderate	75%	25%
	Somewhat Liberal	29%	71%
	Very Liberal	23%	77%
Party Registration	Democratic	29%	71%
	Republican	90%	10%
	Undeclared	65%	35%
Party Identification	Democratic	27%	73%
	Republican	91%	9%
	Swing	79%	21%
Congressional District	CD-1	62%	38%
	CD-2	61%	39%
Region	North Country/Lakes	70%	30%
	Monadnock/Dartmouth	62%	38%
	Merrimack Valley	61%	39%
	Seacoast/Border	59%	41%
Total		61%	39%

How worried are you about inflation?					
		Extremely	Very	Somewhat	Not at All
Gender	Female	27%	30%	34%	9%
	Male	30%	36%	27%	7%
Age	18-34	20%	46%	27%	7%
	35-54	34%	31%	29%	7%
	55-64	29%	32%	31%	8%
	65+	25%	29%	36%	10%
Education	High School or Less	30%	41%	24%	5%
	Some College/Associates Degree	32%	37%	25%	7%
	College Graduate	27%	28%	35%	10%
	Graduate/Professional School	22%	28%	41%	9%
Ideology	Very Conservative	40%	56%	4%	1%
	Somewhat Conservative	44%	40%	14%	1%
	Moderate	40%	35%	19%	6%
	Somewhat Liberal	9%	20%	59%	12%
	Very Liberal	6%	17%	55%	21%
Party Registration	Democratic	11%	19%	55%	16%
	Republican	42%	49%	9%	1%
	Undeclared	33%	32%	28%	7%
Party Identification	Democratic	9%	18%	57%	16%
	Republican	44%	47%	9%	1%
	Swing	42%	38%	17%	4%
Congressional District	CD-1	29%	32%	31%	7%
	CD-2	27%	34%	30%	9%
Region	North Country/Lakes	32%	37%	21%	9%
	Monadnock/Dartmouth	31%	32%	28%	10%
	Merrimack Valley	27%	34%	32%	7%
	Seacoast/Border	28%	31%	33%	8%
Total		28%	33%	31%	8%

If the election for US Senate were today, and the candidates were Maggie Hassan and Chris Sununu, for whom would you vote?

		Hassan	Sununu	Someone Else	Unsure
Gender	Female	49%	38%	8%	4%
	Male	32%	54%	10%	5%
Age	18-34	41%	40%	16%	3%
	35-54	33%	49%	10%	7%
	55-64	41%	48%	7%	4%
	65+	50%	42%	6%	2%
Education	High School or Less	22%	57%	12%	9%
	Some College/Associates Degree	36%	50%	11%	4%
	College Graduate	45%	43%	8%	3%
	Graduate/Professional School	57%	34%	6%	3%
Ideology	Very Conservative	2%	85%	13%	
	Somewhat Conservative	9%	79%	10%	3%
	Moderate	24%	47%	17%	12%
	Somewhat Liberal	81%	10%	4%	5%
	Very Liberal	93%	2%	3%	2%
Party Registration	Democratic	85%	7%	4%	4%
	Republican	2%	82%	14%	2%
	Undeclared	34%	48%	10%	8%
Party Identification	Democratic	84%	7%	3%	5%
	Republican	3%	82%	12%	3%
	Swing	20%	49%	23%	8%
Congressional District	CD-1	40%	50%	7%	3%
	CD-2	42%	41%	11%	6%
Region	North Country/Lakes	34%	61%	5%	
	Monadnock/Dartmouth	44%	37%	11%	8%
	Merrimack Valley	38%	46%	10%	6%
	Seacoast/Border	45%	44%	8%	3%
Total		41%	46%	9%	4%

DEMOGRAPHICS

October 20-22, 2021

n = 1323

New Hampshire Registered Voters

MoE +/- 2.7%

Gender			
		Frequency	Percent
	Female	688	52
	Male	635	48
	Total	1323	100

Age			
		Frequency	Percent
	18-34	206	16
	35-54	429	32
	55-64	345	26
	65+	343	26
	Total	1323	100

Education			
		Frequency	Percent
	High School or Less	221	17
	Some College/Associates Degree	445	34
	College Graduate	368	28
	Graduate/Professional School	290	22
	Total	1323	100

Ideology			
		Frequency	Percent
	Very Conservative	200	15
	Somewhat Conservative	368	28
	Moderate	228	17
	Somewhat Liberal	339	26
	Very Liberal	189	14
	Conservative	568	43
	Moderate	228	17
	Liberal	528	40
	Total	1323	100

Party Registration			
		Frequency	Percent
	Democratic	455	34
	Republican	450	34
	Undeclared	418	32
	Total	1323	100
CD-1	Democratic	232	34
	Republican	251	36
	Undeclared	209	30
	Total	692	100
CD-2	Democratic	224	35
	Republican	198	31
	Undeclared	209	33
	Total	631	100

Party Identification			
		Frequency	Percent
	Democratic	594	45
	Republican	623	47
	Swing	106	8
	Total	1323	100
CD-1	Democratic	301	43
	Republican	344	50
	Swing	47	7
	Total	692	100
CD-2	Democratic	293	46
	Republican	280	44
	Swing	58	9
	Total	1323	100

Congressional District			
		Frequency	Percent
	CD-1	692	52
	CD-2	631	48
	Total	1323	100

Region			
		Frequency	Percent
	North Country/Lakes	143	11
	Monadnock/Dartmouth	132	10
	Merrimack Valley	519	39
	Seacoast/Border	529	40
	Total	1323	100

ABOUT THE SAINT ANSELM COLLEGE SURVEY CENTER

The Saint Anselm College Survey Center (SACSC) was founded in the wake of the 2016 election, and launched its first poll in February 2018 as the midterm elections were getting underway. Housed within the New Hampshire Institute of Politics at Saint Anselm College, the Center conducts quarterly polls of New Hampshire voter attitudes and additional polls as circumstances warrant. This research supports the academic mission of the College, and provides students with a practical education in survey techniques while providing the public at large with insight into political opinion trends that impact the state's federal and gubernatorial elections. The Center's political surveys were the most accurate New Hampshire election polling throughout the 2020 cycle. To support its operations, the Center performs commissioned research on behalf of nonprofit organizations and corporations.

For more information on SACSC, please visit:
anselm.edu/new-hampshire-institute-politics/polling

For inquiries, please contact: nhioppoll@anselm.edu