

A SURVEY OF NEW HAMPSHIRE VOTER ATTITUDES

CONDUCTED
August 24-26, 2021

Neil Levesque

EXECUTIVE DIRECTOR,
NEW HAMPSHIRE INSTITUTE OF POLITICS

FACULTY ADVISOR

Tauna Sisco

CHAIR, DEPARTMENT OF SOCIOLOGY



**NEW HAMPSHIRE
INSTITUTE OF POLITICS**

Saint Anselm College

Survey Notes	3
Executive Summary	4
Charts	5
Weighted Marginals	9
Weighted Tables	15
Demographics	37
About the SACSC	40

These results are from the Saint Anselm College Survey Center poll based on online surveys of 1855 New Hampshire registered voters. Surveys were collected between August 24th and 26th, 2021, from cell phone users randomly drawn from a sample of registered voters reflecting the demographic and partisan characteristics of the voting population. Names were presented in random order for the job approval series and the Senate ballot test. The survey has an overall margin of sampling error of +/- 2.3% with a confidence interval of 95%; the margin of sampling error for questions specific to congressional districts are 3.1% for the 1st Congressional District and 3.3% for the 2nd Congressional District. The data are weighted for age, gender, geography, and education based on a voter demographic model derived from historical voting patterns, but are not weighted by party registration or party identification.

New Hampshire Institute of Politics Executive Director Neil Levesque summarized the results, saying, “President Joe Biden’s job approval is collapsing in New Hampshire, putting Democratic incumbents in jeopardy. From an 8-point net approval in February, Biden’s job approval has inverted and now sits at 44%-55%, slightly worse than Donald Trump (45%-55%) in our pre-election poll last fall; 49% of voters strongly disapprove of his performance. 62% of voters now think that the country is on the wrong track, up from 55% in February, while only 28% think we’re on the right track. Most ominous for New Hampshire’s all-Democratic congressional delegation, the generic congressional ballot has swung to the Republicans (46%-43%) for the first time in the history of this poll.

“Biden’s job approval has steadily declined since he took office in response to several challenges. In this poll, he is bearing the responsibility for the current situation in Afghanistan (44%) more than his predecessors (Bush 27%, Trump 13%, and Obama 4%). This is energizing Republicans: 43% of voters are more inclined to vote for Republican candidates in next year’s election based on Biden’s handling of the situation, versus 14% that are more inclined to vote for Democratic candidates. This polarization is driving a voter intensity disparity benefitting Republicans: 97% of Republican voters disapprove of Biden’s performance versus only 85% of Democratic voters that approve. 92% of Republican voters would vote for a congressional candidate from their party today versus only 86% of Democratic voters who would vote for a candidate from their party.

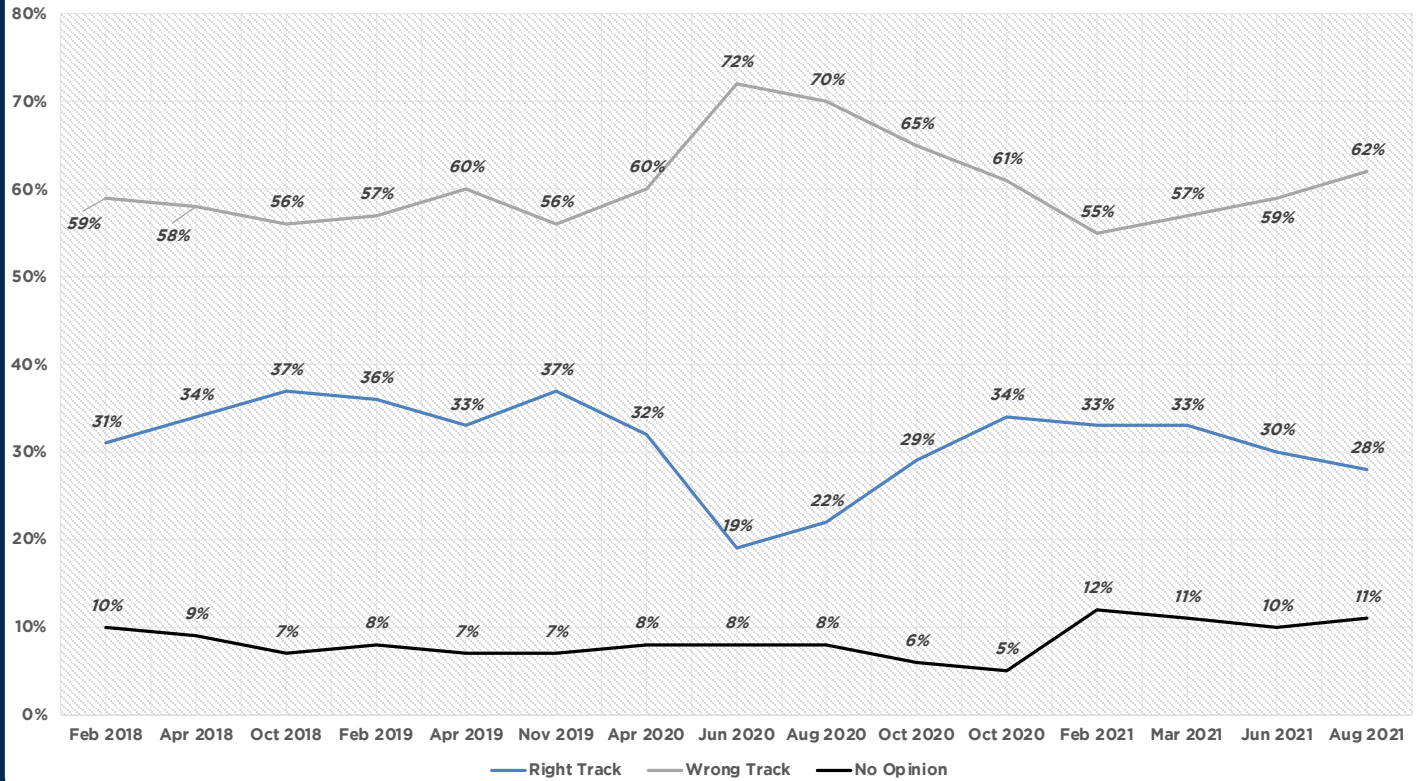
“Senator Maggie Hassan’s job approval has actually improved slightly since our last poll, but is still at a net 4-point negative at 44%-48%. Congressman Chris Pappas is even at 42%-42%, and Congresswoman Annie Kuster is at a net 1-point positive at 43%-42%. These represent the lowest net approval for both Representatives in the history of this poll. They all benefit from less voter polarization relative to Biden; while all of them roughly share Biden’s level of approval, they don’t suffer from his level of disapproval. This suggests that efforts by all of them to distinguish themselves from the Democratic Party at-large and localize their re-election races is beginning to show some effectiveness.

“Governor Chris Sununu’s net job approval is beginning to narrow in this polarized environment, perhaps as Democratic voters begin to evaluate him as a challenger to Senator Hassan. From a net 45-point advantage in our pre-election poll last fall, Sununu now sits at a 30-point positive approval at 64%-34%. In a hypothetical U.S. Senate matchup against Hassan, Sununu currently enjoys a 49%-40% lead, up from 47%-41% in March. This margin is driven by the intensity disparity noted above: Sununu leads among Republican voters 89%-2%, while Democratic voters are a bit less intense for Hassan at 83%-11%; undeclared voters favor Sununu 50%-34%. It’s worth noting that while males favor Sununu by a wide 55%-34% margin, he trails Hassan among women by only 2 points, 44%-46%.

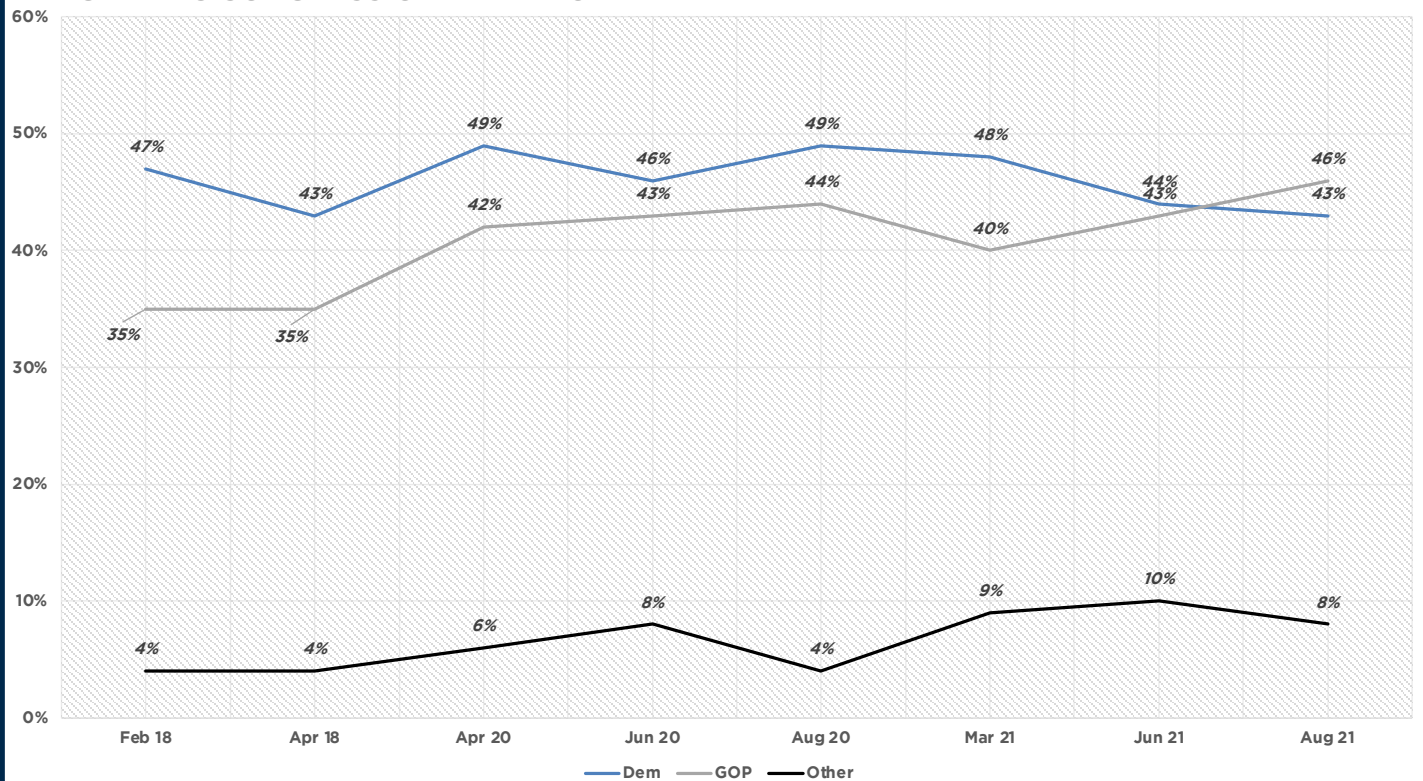
“New Hampshire voters are split on a possible vaccination mandate, with 50% supportive and 47% opposed. This is an issue that falls along partisan lines, with 85% of Democratic voters in support, 80% of Republican voters opposed, and undeclared voters split at 48%-49%. 82% of Democratic voters will get a booster shot as soon as available, while only 24% of Republican voters will; 49% of Republicans would refuse a booster shot altogether.

“The 2022 cycle is shaping up as quite dynamic as political cross-currents on issues from inflation to COVID to government spending to energy to Afghanistan present serious challenges for incumbents to negotiate. Control of Congress is a stake, and the races here in New Hampshire may play as important a role in determining who wields the gavel in both chambers as any state,” Levesque concluded.

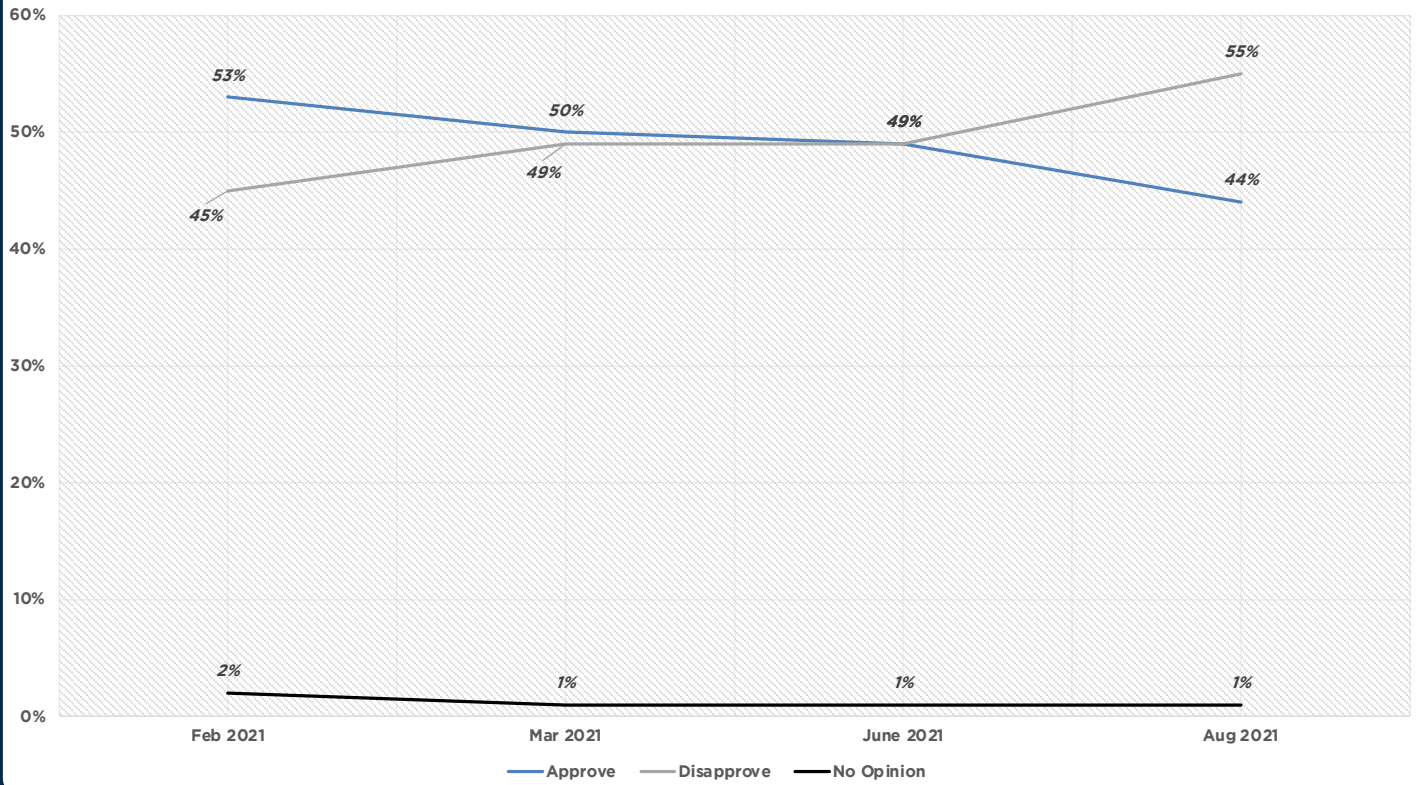
RIGHT TRACK VS WRONG TRACK



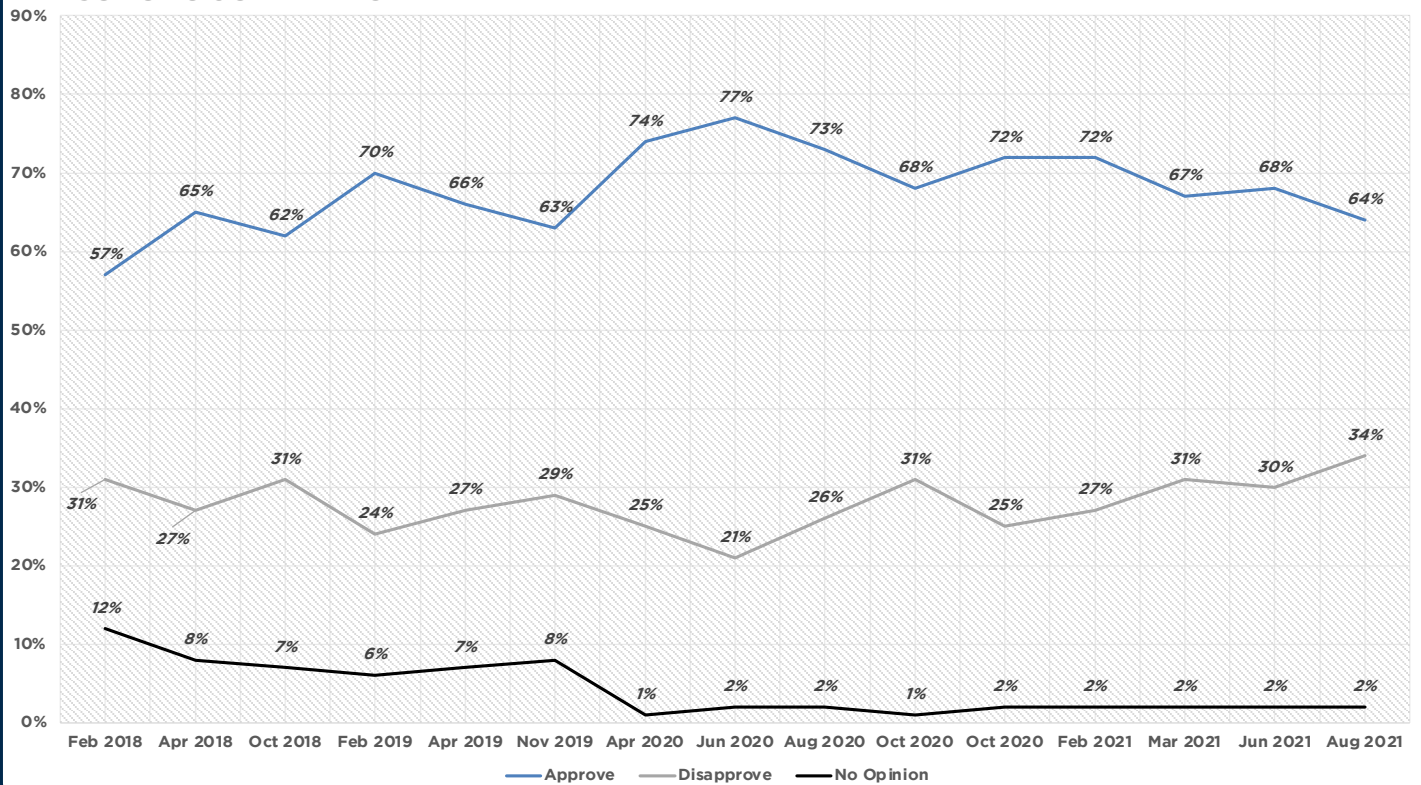
GENERIC CONGRESSIONAL BALLOT



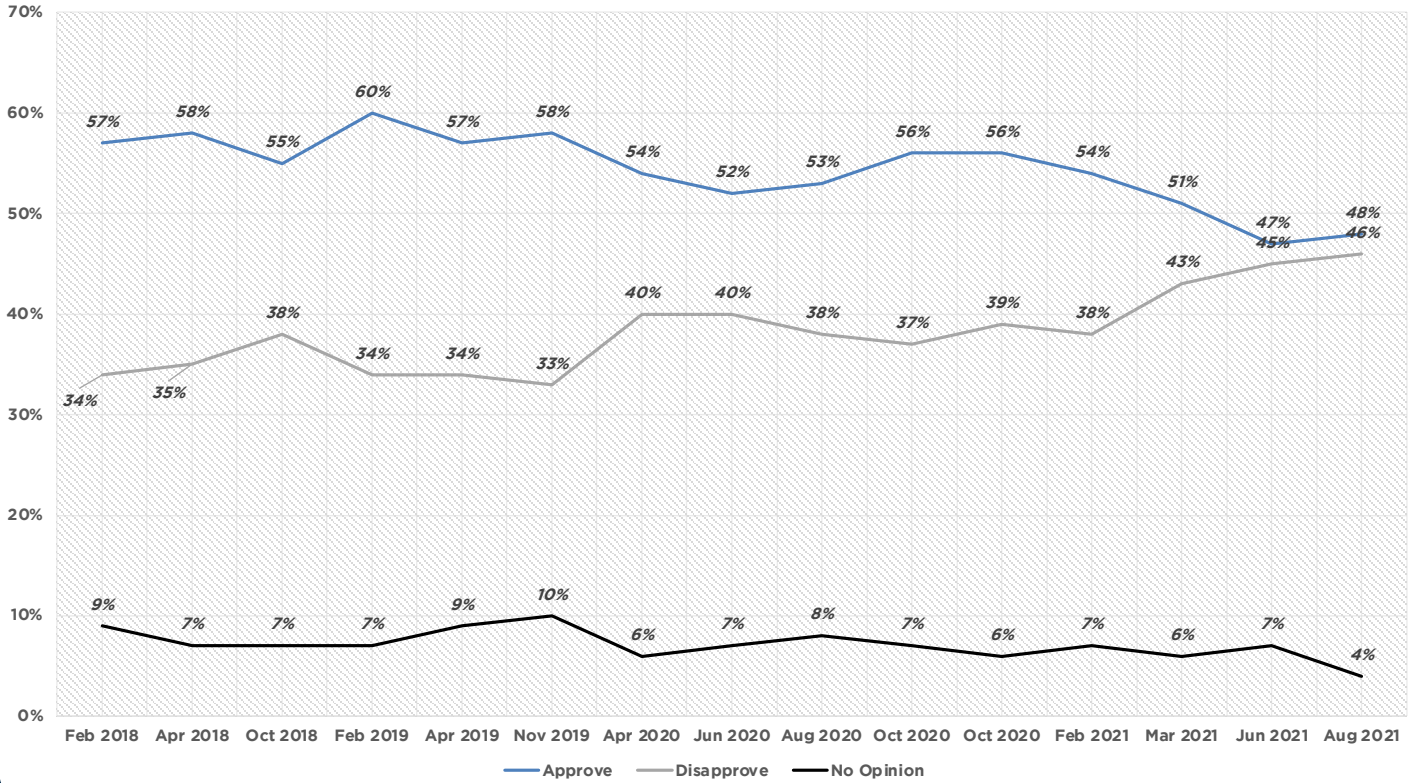
BIDEN JOB APPROVAL



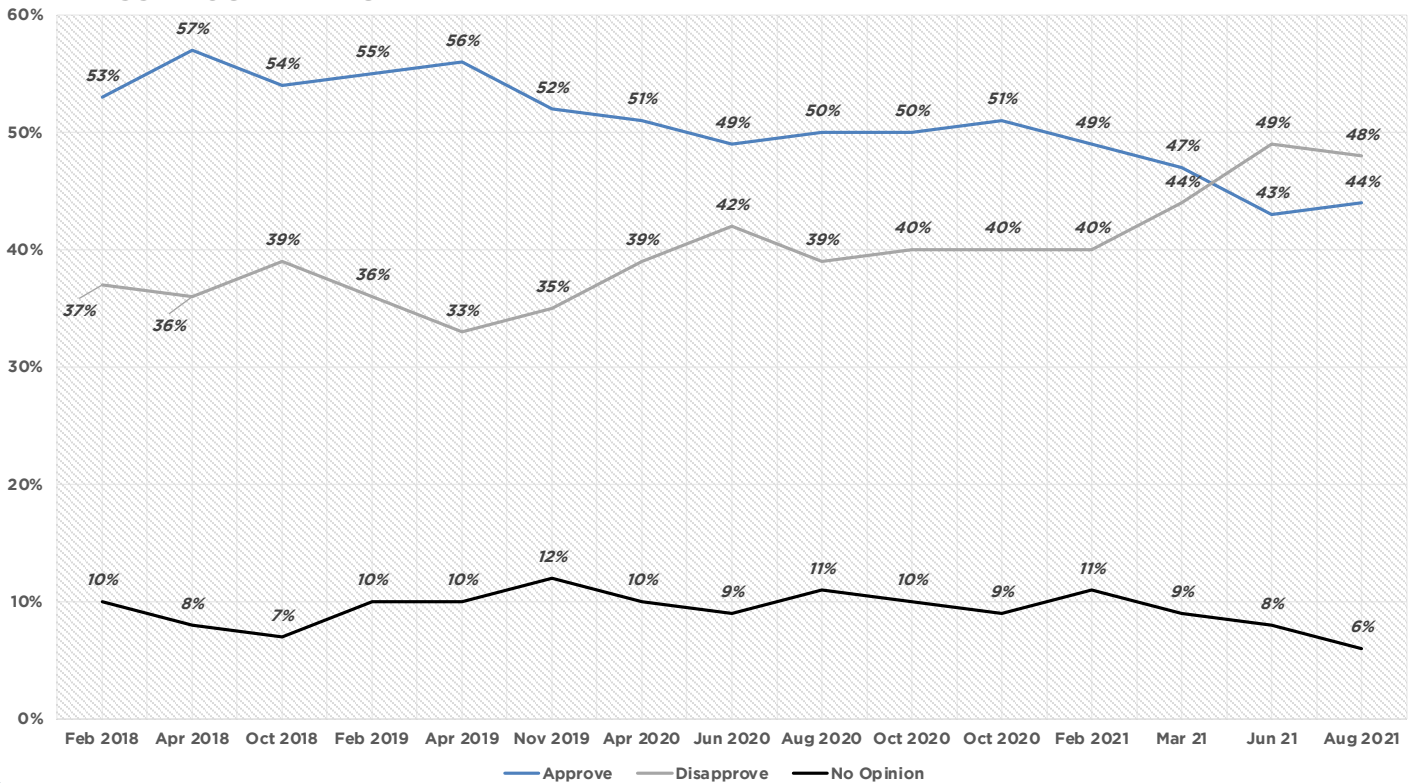
SUNUNU JOB APPROVAL



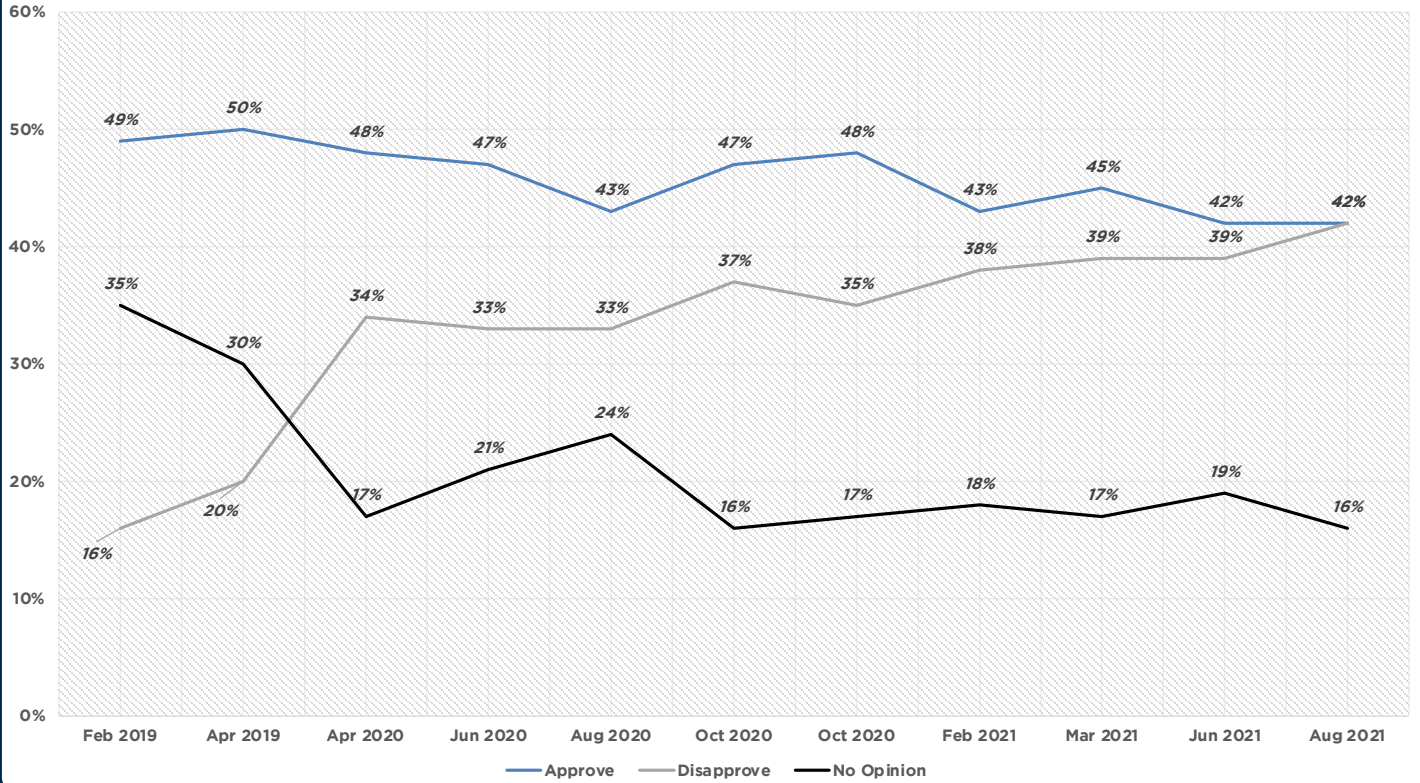
SHAHEEN JOB APPROVAL



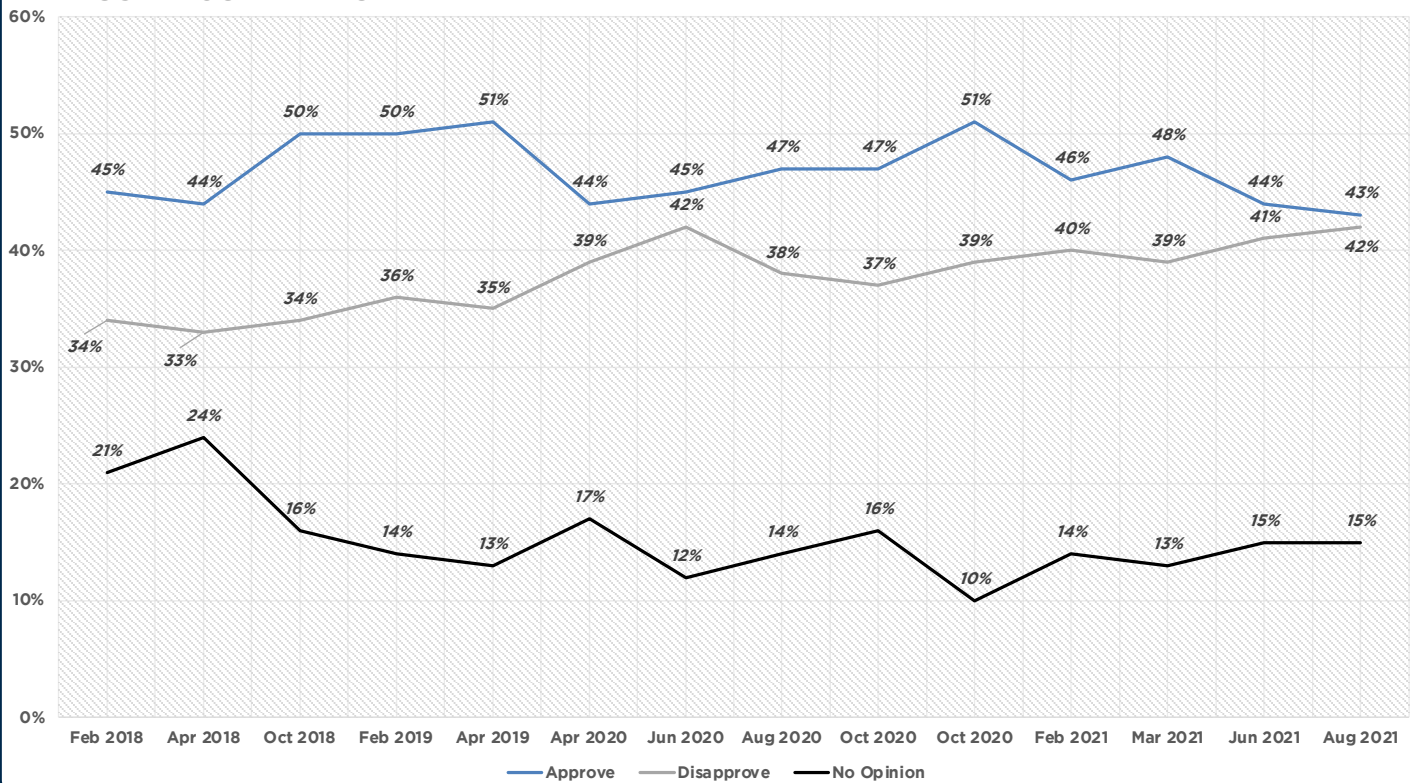
HASSAN JOB APPROVAL



PAPPAS JOB APPROVAL



KUSTER JOB APPROVAL



WEIGHTED MARGINALS

August 24-26, 2021

n = 1855

New Hampshire Registered Voters

MoE +/- 2.3%

Would you say that things in our country are heading in the right direction, or have things gotten off on the wrong track?			
		Frequency	Percent
	Right Track	513	28
	Wrong Track	1143	62
	Unsure	199	11
	Total	1855	100

If the election for Congress were held today, for which candidate would you likely vote?			
		Frequency	Percent
	Democratic	804	43
	Republican	862	46
	Other	48	3
	Unsure	142	8
	Total	1855	100

Biden Job Approval			
		Frequency	Percent
	Strongly Approve	409	22
	Somewhat Approve	410	22
	Somewhat Disapprove	118	6
	Strongly Disapprove	906	49
	No Opinion	6	0
	Never Heard Of	6	0
	Approve	819	44
	Disapprove	1024	55
	No Opinion	12	1
	Total	1855	100

Sununu Job Approval			
		Frequency	Percent
	Strongly Approve	572	31
	Somewhat Approve	614	33
	Somewhat Disapprove	305	16
	Strongly Disapprove	328	18
	No Opinion	37	2
	Approve	1185	64
	Disapprove	633	34
	No Opinion	37	2
	Total	1855	100

Shaheen Job Approval			
		Frequency	Percent
	Strongly Approve	515	28
	Somewhat Approve	372	20
	Somewhat Disapprove	278	15
	Strongly Disapprove	570	31
	No Opinion	117	6
	Never Heard Of	3	0
	Approve	887	48
	Disapprove	848	46
	No Opinion	120	6
	Total	1855	100

Hassan Job Approval			
		Frequency	Percent
	Strongly Approve	422	23
	Somewhat Approve	398	21
	Somewhat Disapprove	249	13
	Strongly Disapprove	636	34
	No Opinion	140	8
	Never Heard Of	9	0
	Approve	820	44
	Disapprove	885	48
	No Opinion	149	8
	Total	1855	100

Pappas Job Approval			
		Frequency	Percent
	Strongly Approve	204	21
	Somewhat Approve	210	21
	Somewhat Disapprove	111	11
	Strongly Disapprove	307	31
	No Opinion	145	15
	Never Heard Of	13	1
	Approve	415	42
	Disapprove	418	42
	No Opinion	157	16
	Total	991	100

Kuster Job Approval			
		Frequency	Percent
	Strongly Approve	200	23
	Somewhat Approve	174	20
	Somewhat Disapprove	92	11
	Strongly Disapprove	267	31
	No Opinion	118	14
	Never Heard Of	13	2
	Approve	374	43
	Disapprove	359	42
	No Opinion	132	15
	Total	864	100

Which of the below statements, even if not completely accurate, comes closest to your thoughts about the withdrawal of United States troops from Afghanistan?

"The US should have stayed indefinitely to keep the region stable."

"It was about time to go, but more time and effort should've been taken to ensure Americans and allies could get to safety."

"The US withdrawal was long overdue."

"The US should never have been in Afghanistan in the first place."

		Frequency	Percent
	Stay Indefinitely	168	9
	Ensure Safety	1074	58
	Overdue	261	14
	Shouldn't Have Been There	353	19
	Total	1855	100

In your view, who bears the most responsibility for the current situation in Afghanistan?

		Frequency	Percent
	Bush	509	27
	Obama	72	4
	Trump	248	13
	Biden	820	44
	Unsure	207	11
	Total	1855	100

There are an estimated 50,000 - 80,000 Afghans that are known to have assisted United States efforts in Afghanistan who now face persecution by the Taliban. In your view, should these potential refugees be allowed to resettle in the United States?

		Frequency	Percent
	All	692	37
	Some	1010	54
	None	153	8
	Total	1855	100

Does President Biden's handling of the Afghan crisis impact your views on next year's elections?

		Frequency	Percent
	Inclined More Democratic	257	14
	Inclined More Republican	800	43
	No Difference	798	43
	Total	1855	100

Would you support or oppose a New Hampshire vaccination mandate?			
		Frequency	Percent
	Strongly Support	719	39
	Somewhat Support	217	12
	Somewhat Oppose	148	8
	Strongly Oppose	716	39
	Unsure	54	3
	Support	936	50
	Oppose	865	47
	Unsure	54	3
	Total	1855	100

Do you plan to get a COVID booster shot when available?			
		Frequency	Percent
	ASAP	967	52
	When Convenient	209	11
	No	506	27
	No Answer	172	9
	Total	1855	100

If the election for US Senate were today, and the candidates were Maggie Hassan and Chris Sununu, for whom would you vote?			
		Frequency	Percent
	Hassan	752	41
	Sununu	915	49
	Someone Else	115	6
	Unsure	74	4
	Total	1855	100

WEIGHTED TABLES

August 24-26, 2021

n = 1855

New Hampshire Registered Voters

MoE +/- 2.3%

Would you say that things in our country are heading in the right direction, or have things gotten off on the wrong track?				
		Right Track	Wrong Track	Unsure
Gender	Female	31%	55%	14%
	Male	24%	69%	7%
Age	18-34	23%	64%	12%
	35-54	22%	68%	10%
	55-64	29%	61%	9%
	65+	35%	53%	12%
Education	High School or Less	21%	74%	5%
	Some College/Associates Degree	23%	66%	12%
	College Graduate	31%	59%	10%
	Graduate/Professional School	36%	49%	15%
Ideology	Very Conservative	1%	99%	0%
	Somewhat Conservative	7%	90%	3%
	Moderate	15%	75%	10%
	Somewhat Liberal	58%	24%	19%
	Very Liberal	53%	26%	21%
Party Registration	Democratic	57%	26%	17%
	Republican	2%	97%	1%
	Undeclared	23%	63%	13%
Party Identification	Democratic	54%	26%	20%
	Republican	2%	97%	1%
	Swing	14%	79%	7%
Congressional District	CD-1	28%	63%	10%
	CD-2	28%	61%	12%
Region	North Country/Lakes	27%	68%	4%
	Monadnock/Dartmouth	21%	69%	10%
	Merrimack Valley	30%	59%	11%
	Seacoast/Border	27%	61%	12%
Total		28%	62%	11%

If the election for Congress were held today, for which candidate would you likely vote?					
		Democratic	Republican	Other	Unsure
Gender	Female	51%	41%	1%	7%
	Male	36%	53%	4%	8%
Age	18-34	47%	39%	6%	9%
	35-54	39%	50%	3%	8%
	55-64	40%	50%	2%	8%
	65+	50%	42%	1%	7%
Education	High School or Less	30%	60%	3%	7%
	Some College/Associates Degree	38%	53%	2%	6%
	College Graduate	47%	42%	3%	8%
	Graduate/Professional School	57%	31%	3%	9%
Ideology	Very Conservative	0%	96%	2%	1%
	Somewhat Conservative	9%	82%	1%	8%
	Moderate	31%	36%	11%	23%
	Somewhat Liberal	83%	8%	1%	8%
	Very Liberal	93%	4%	1%	1%
Party Registration	Democratic	86%	7%	2%	5%
	Republican	2%	92%	1%	4%
	Undeclared	40%	41%	5%	14%
Party Identification	Democratic	86%	6%	2%	7%
	Republican	2%	91%	1%	6%
	Swing	13%	40%	18%	29%
Congressional District	CD-1	43%	47%	2%	7%
	CD-2	43%	45%	3%	9%
Region	North Country/Lakes	34%	54%	3%	9%
	Monadnock/Dartmouth	33%	54%	5%	8%
	Merrimack Valley	47%	44%	1%	9%
	Seacoast/Border	45%	45%	3%	6%
Total		43%	46%	3%	8%

Biden Job Approval				
		Approve	Disapprove	No Opinion
Gender	Female	52%	47%	1%
	Male	35%	64%	1%
Age	18-34	42%	56%	2%
	35-54	39%	61%	0%
	55-64	43%	57%	0%
	65+	53%	46%	0%
Education	High School or Less	29%	71%	
	Some College/Associates Degree	37%	62%	1%
	College Graduate	49%	50%	1%
	Graduate/Professional School	61%	39%	0%
Ideology	Very Conservative	2%	98%	0%
	Somewhat Conservative	12%	88%	0%
	Moderate	33%	66%	1%
	Somewhat Liberal	85%	14%	1%
	Very Liberal	87%	12%	2%
Party Registration	Democratic	86%	13%	1%
	Republican	3%	97%	0%
	Undeclared	42%	57%	1%
Party Identification	Democratic	85%	14%	1%
	Republican	3%	96%	0%
	Swing	25%	75%	1%
Congressional District	CD-1	44%	55%	1%
	CD-2	45%	55%	0%
Region	North Country/Lakes	33%	67%	1%
	Monadnock/Dartmouth	35%	65%	
	Merrimack Valley	47%	52%	1%
	Seacoast/Border	46%	53%	1%
Total		44%	55%	1%

Biden Job Approval							
		Strongly Approve	Somewhat Approve	Somewhat Disapprove	Strongly Disapprove	No Opinion	Never Heard Of
Gender	Female	26%	26%	6%	42%	0%	1%
	Male	18%	18%	7%	57%	1%	0%
Age	18-34	9%	33%	10%	46%	1%	2%
	35-54	17%	22%	7%	53%	0%	
	55-64	24%	18%	6%	51%	0%	
	65+	33%	20%	3%	43%	0%	0%
Education	High School or Less	14%	15%	7%	65%		
	Some College/Associates Degree	18%	19%	6%	56%	1%	1%
	College Graduate	25%	23%	7%	43%	0%	0%
	Graduate/Professional School	30%	30%	6%	33%	0%	
Ideology	Very Conservative	1%	1%	1%	97%		0%
	Somewhat Conservative	6%	6%	7%	81%	0%	
	Moderate	14%	19%	13%	54%	1%	
	Somewhat Liberal	43%	42%	6%	9%	1%	
	Very Liberal	44%	43%	6%	6%		2%
Party Registration	Democratic	46%	39%	5%	8%	0%	1%
	Republican	2%	2%	3%	94%		0%
	Undeclared	17%	25%	11%	47%	1%	
Party Identification	Democratic	43%	42%	8%	6%	0%	1%
	Republican	1%	2%	4%	92%	0%	0%
	Swing	8%	17%	11%	63%	1%	
Congressional District	CD-1	22%	21%	6%	50%	1%	0%
	CD-2	22%	23%	7%	48%		0%
Region	North Country/Lakes	16%	17%	9%	58%	1%	
	Monadnock/Dartmouth	19%	16%	2%	63%		
	Merrimack Valley	25%	23%	8%	43%	0%	1%
	Seacoast/Border	22%	25%	5%	48%	1%	0%
Total		22%	22%	6%	49%	0%	0%

Sununu Job Approval				
		Approve	Disapprove	No Opinion
Gender	Female	62%	36%	2%
	Male	66%	32%	2%
Age	18-34	52%	46%	2%
	35-54	63%	35%	1%
	55-64	68%	29%	3%
	65+	68%	31%	2%
Education	High School or Less	69%	30%	2%
	Some College/Associates Degree	71%	26%	2%
	College Graduate	61%	37%	2%
	Graduate/Professional School	52%	46%	1%
Ideology	Very Conservative	92%	6%	2%
	Somewhat Conservative	90%	9%	1%
	Moderate	60%	35%	4%
	Somewhat Liberal	43%	54%	2%
	Very Liberal	25%	75%	0%
Party Registration	Democratic	35%	64%	1%
	Republican	92%	6%	1%
	Undeclared	66%	31%	4%
Party Identification	Democratic	37%	61%	1%
	Republican	91%	7%	2%
	Swing	73%	23%	3%
Congressional District	CD-1	64%	33%	2%
	CD-2	63%	35%	2%
Region	North Country/Lakes	71%	29%	1%
	Monadnock/Dartmouth	68%	32%	1%
	Merrimack Valley	64%	35%	2%
	Seacoast/Border	61%	35%	3%
Total		64%	34%	2%

Sununu Job Approval						
		Strongly Approve	Somewhat Approve	Somewhat Disapprove	Strongly Disapprove	No Opinion
Gender	Female	29%	32%	16%	20%	2%
	Male	32%	34%	16%	15%	2%
Age	18-34	23%	28%	17%	29%	2%
	35-54	29%	34%	15%	20%	1%
	55-64	32%	37%	17%	12%	3%
	65+	37%	31%	18%	13%	2%
Education	High School or Less	34%	35%	13%	17%	2%
	Some College/Associates Degree	37%	35%	13%	13%	2%
	College Graduate	29%	32%	19%	17%	2%
	Graduate/Professional School	22%	30%	21%	25%	1%
Ideology	Very Conservative	50%	42%	2%	3%	2%
	Somewhat Conservative	52%	38%	6%	2%	1%
	Moderate	30%	30%	16%	19%	4%
	Somewhat Liberal	11%	32%	32%	22%	2%
	Very Liberal	5%	20%	23%	52%	0%
Party Registration	Democratic	9%	26%	28%	36%	1%
	Republican	54%	38%	3%	3%	1%
	Undeclared	30%	36%	18%	13%	4%
Party Identification	Democratic	9%	28%	29%	32%	1%
	Republican	53%	38%	4%	3%	2%
	Swing	32%	41%	10%	14%	4%
Congressional District	CD-1	30%	34%	16%	17%	2%
	CD-2	32%	32%	17%	18%	2%
Region	North Country/Lakes	35%	36%	17%	11%	0%
	Monadnock/Dartmouth	36%	31%	16%	16%	1%
	Merrimack Valley	30%	33%	17%	18%	2%
	Seacoast/Border	29%	33%	16%	19%	3%
Total		31%	33%	16%	18%	2%

Shaheen Job Approval				
		Approve	Disapprove	No Opinion
Gender	Female	54%	38%	8%
	Male	41%	54%	5%
Age	18-34	43%	47%	10%
	35-54	43%	50%	7%
	55-64	48%	45%	7%
	65+	57%	39%	4%
Education	High School or Less	37%	57%	5%
	Some College/Associates Degree	43%	50%	7%
	College Graduate	49%	44%	7%
	Graduate/Professional School	62%	32%	6%
Ideology	Very Conservative	10%	86%	5%
	Somewhat Conservative	21%	71%	8%
	Moderate	32%	54%	14%
	Somewhat Liberal	84%	11%	5%
	Very Liberal	87%	11%	2%
Party Registration	Democratic	86%	11%	3%
	Republican	11%	83%	6%
	Undeclared	45%	44%	10%
Party Identification	Democratic	84%	12%	5%
	Republican	12%	80%	8%
	Swing	32%	57%	10%
Congressional District	CD-1	47%	47%	6%
	CD-2	49%	44%	6%
Region	North Country/Lakes	43%	53%	5%
	Monadnock/Dartmouth	41%	56%	3%
	Merrimack Valley	52%	40%	7%
	Seacoast/Border	47%	46%	7%
Total		48%	46%	6%

Shaheen Job Approval							
		Strongly Approve	Somewhat Approve	Somewhat Disapprove	Strongly Disapprove	No Opinion	Never Heard Of
Gender	Female	34%	20%	14%	23%	8%	0%
	Male	21%	20%	16%	39%	5%	
Age	18-34	18%	25%	15%	32%	10%	0%
	35-54	18%	25%	17%	33%	6%	0%
	55-64	32%	16%	15%	31%	7%	
	65+	41%	16%	12%	28%	4%	
Education	High School or Less	18%	19%	15%	43%	5%	
	Some College/Associates Degree	23%	20%	17%	33%	7%	
	College Graduate	30%	20%	16%	28%	6%	0%
	Graduate/Professional School	41%	20%	10%	22%	5%	0%
Ideology	Very Conservative	2%	8%	17%	68%	5%	
	Somewhat Conservative	7%	14%	25%	46%	7%	0%
	Moderate	13%	19%	19%	35%	13%	1%
	Somewhat Liberal	57%	27%	7%	4%	5%	
	Very Liberal	53%	33%	3%	8%	2%	
Party Registration	Democratic	58%	28%	5%	6%	3%	
	Republican	2%	8%	22%	61%	6%	
	Undeclared	22%	24%	17%	27%	10%	0%
Party Identification	Democratic	54%	30%	6%	5%	5%	
	Republican	2%	10%	24%	56%	8%	0%
	Swing	12%	21%	18%	39%	9%	2%
Congressional District	CD-1	28%	19%	16%	31%	6%	0%
	CD-2	28%	21%	14%	30%	6%	0%
Region	North Country/Lakes	25%	17%	17%	36%	5%	
	Monadnock/Dartmouth	22%	19%	18%	38%	3%	
	Merrimack Valley	30%	22%	14%	27%	7%	0%
	Seacoast/Border	28%	19%	15%	32%	7%	0%
Total		28%	20%	15%	31%	6%	0%

Hassan Job Approval				
		Approve	Disapprove	No Opinion
Gender	Female	51%	39%	10%
	Male	37%	58%	6%
Age	18-34	38%	50%	11%
	35-54	38%	52%	9%
	55-64	46%	47%	7%
	65+	54%	41%	6%
Education	High School or Less	36%	55%	8%
	Some College/Associates Degree	39%	54%	8%
	College Graduate	44%	47%	9%
	Graduate/Professional School	59%	34%	7%
Ideology	Very Conservative	6%	86%	9%
	Somewhat Conservative	16%	75%	9%
	Moderate	32%	54%	14%
	Somewhat Liberal	82%	13%	6%
	Very Liberal	81%	13%	6%
Party Registration	Democratic	82%	13%	5%
	Republican	6%	85%	9%
	Undeclared	43%	47%	11%
Party Identification	Democratic	81%	13%	6%
	Republican	8%	82%	10%
	Swing	26%	60%	14%
Congressional District	CD-1	44%	49%	7%
	CD-2	45%	46%	9%
Region	North Country/Lakes	37%	56%	8%
	Monadnock/Dartmouth	34%	59%	7%
	Merrimack Valley	48%	44%	8%
	Seacoast/Border	45%	47%	9%
Total		44%	48%	8%

Hassan Job Approval							
		Strongly Approve	Somewhat Approve	Somewhat Disapprove	Strongly Disapprove	No Opinion	Never Heard Of
Gender	Female	27%	24%	11%	28%	10%	1%
	Male	18%	19%	16%	41%	5%	0%
Age	18-34	12%	27%	12%	38%	10%	1%
	35-54	15%	23%	18%	34%	8%	1%
	55-64	24%	21%	11%	36%	7%	0%
	65+	37%	17%	11%	30%	6%	0%
Education	High School or Less	14%	22%	11%	45%	8%	0%
	Some College/Associates Degree	17%	21%	17%	37%	7%	0%
	College Graduate	24%	20%	16%	31%	8%	1%
	Graduate/Professional School	36%	23%	7%	26%	7%	0%
Ideology	Very Conservative	0%	5%	13%	73%	8%	0%
	Somewhat Conservative	6%	10%	24%	51%	8%	1%
	Moderate	9%	23%	14%	40%	13%	1%
	Somewhat Liberal	47%	34%	7%	6%	5%	0%
	Very Liberal	46%	35%	5%	9%	5%	0%
Party Registration	Democratic	49%	34%	4%	8%	4%	0%
	Republican	1%	5%	19%	66%	8%	0%
	Undeclared	17%	25%	17%	30%	10%	1%
Party Identification	Democratic	45%	36%	6%	7%	6%	0%
	Republican	1%	7%	21%	61%	9%	1%
	Swing	8%	18%	14%	45%	13%	2%
Congressional District	CD-1	23%	21%	14%	35%	7%	0%
	CD-2	23%	22%	13%	34%	8%	1%
Region	North Country/Lakes	21%	17%	15%	40%	7%	1%
	Monadnock/Dartmouth	17%	17%	11%	47%	7%	
	Merrimack Valley	26%	22%	14%	30%	7%	1%
	Seacoast/Border	22%	23%	13%	34%	8%	0%
Total		23%	21%	13%	34%	8%	0%

Pappas Job Approval				
		Approve	Disapprove	No Opinion
Gender	Female	49%	33%	18%
	Male	34%	52%	13%
Age	18-34	33%	45%	22%
	35-54	42%	40%	18%
	55-64	40%	45%	16%
	65+	49%	41%	10%
Education	High School or Less	30%	49%	21%
	Some College/Associates Degree	36%	49%	15%
	College Graduate	44%	39%	17%
	Graduate/Professional School	58%	30%	12%
Ideology	Very Conservative	8%	82%	10%
	Somewhat Conservative	18%	64%	18%
	Moderate	34%	43%	23%
	Somewhat Liberal	72%	11%	17%
	Very Liberal	77%	13%	10%
Party Registration	Democratic	77%	13%	10%
	Republican	11%	73%	15%
	Undeclared	38%	40%	22%
Party Identification	Democratic	73%	13%	14%
	Republican	13%	71%	16%
	Swing	32%	42%	26%
Region	North Country/Lakes	38%	39%	23%
	Monadnock/Dartmouth	11%	11%	78%
	Merrimack Valley	46%	41%	13%
	Seacoast/Border	42%	44%	15%
Total		42%	42%	16%

Pappas Job Approval							
		Strongly Approve	Somewhat Approve	Somewhat Disapprove	Strongly Disapprove	No Opinion	Never Heard Of
Gender	Female	24%	25%	9%	24%	17%	1%
	Male	17%	17%	13%	39%	12%	1%
Age	18-34	16%	16%	16%	29%	19%	3%
	35-54	17%	25%	12%	29%	17%	1%
	55-64	19%	21%	10%	35%	14%	1%
	65+	29%	20%	9%	32%	10%	0%
Education	High School or Less	14%	16%	7%	41%	20%	1%
	Some College/Associates Degree	17%	19%	13%	35%	14%	2%
	College Graduate	23%	21%	13%	27%	15%	2%
	Graduate/Professional School	29%	29%	9%	22%	11%	0%
Ideology	Very Conservative	1%	7%	16%	66%	8%	1%
	Somewhat Conservative	5%	14%	19%	46%	17%	1%
	Moderate	8%	26%	4%	39%	22%	2%
	Somewhat Liberal	41%	31%	7%	4%	15%	2%
	Very Liberal	46%	31%	4%	9%	10%	
Party Registration	Democratic	46%	31%	4%	8%	10%	1%
	Republican	3%	8%	16%	57%	15%	1%
	Undeclared	12%	26%	13%	27%	20%	2%
Party Identification	Democratic	41%	32%	6%	7%	13%	1%
	Republican	3%	10%	17%	54%	15%	1%
	Swing	9%	23%	7%	35%	23%	4%
Region	North Country/Lakes	19%	19%	10%	30%	19%	3%
	Monadnock/Dartmouth	11%			11%	78%	
	Merrimack Valley	24%	22%	12%	30%	12%	0%
	Seacoast/Border	19%	22%	11%	33%	13%	1%
Total		21%	21%	11%	31%	15%	1%

Kuster Job Approval				
		Approve	Disapprove	No Opinion
Gender	Female	47%	34%	19%
	Male	40%	50%	11%
Age	18-34	41%	38%	21%
	35-54	38%	46%	16%
	55-64	41%	46%	13%
	65+	56%	31%	12%
Education	High School or Less	25%	52%	23%
	Some College/Associates Degree	41%	46%	12%
	College Graduate	46%	38%	16%
	Graduate/Professional School	55%	30%	14%
Ideology	Very Conservative	7%	80%	13%
	Somewhat Conservative	14%	69%	17%
	Moderate	31%	44%	25%
	Somewhat Liberal	78%	11%	12%
	Very Liberal	83%	7%	10%
Party Registration	Democratic	80%	9%	11%
	Republican	7%	77%	15%
	Undeclared	39%	42%	20%
Party Identification	Democratic	78%	9%	13%
	Republican	7%	76%	17%
	Swing	19%	63%	18%
Region	North Country/Lakes	29%	48%	24%
	Monadnock/Dartmouth	32%	58%	10%
	Merrimack Valley	46%	37%	17%
	Seacoast/Border	51%	36%	14%
Total		43%	42%	15%

Kuster Job Approval							
		Strongly Approve	Somewhat Approve	Somewhat Disapprove	Strongly Disapprove	No Opinion	Never Heard Of
Gender	Female	28%	19%	10%	24%	17%	2%
	Male	18%	22%	11%	38%	10%	1%
Age	18-34	9%	32%	10%	28%	16%	4%
	35-54	17%	21%	15%	32%	14%	2%
	55-64	26%	15%	9%	37%	13%	0%
	65+	38%	18%	7%	24%	12%	0%
Education	High School or Less	11%	15%	11%	41%	21%	1%
	Some College/Associates Degree	18%	23%	11%	35%	10%	2%
	College Graduate	27%	18%	13%	26%	15%	0%
	Graduate/Professional School	34%	22%	6%	24%	11%	3%
Ideology	Very Conservative	1%	7%	13%	66%	12%	1%
	Somewhat Conservative	7%	7%	16%	52%	16%	1%
	Moderate	15%	16%	14%	30%	23%	2%
	Somewhat Liberal	46%	32%	6%	5%	12%	
	Very Liberal	43%	41%	2%	4%	5%	5%
Party Registration	Democratic	49%	31%	4%	5%	9%	2%
	Republican	2%	5%	14%	64%	14%	1%
	Undeclared	16%	22%	14%	28%	18%	1%
Party Identification	Democratic	44%	34%	4%	5%	12%	2%
	Republican	1%	5%	17%	59%	16%	1%
	Swing	10%	9%	19%	45%	14%	3%
Region	North Country/Lakes	17%	12%	12%	34%	24%	
	Monadnock/Dartmouth	15%	16%	7%	51%	10%	
	Merrimack Valley	26%	19%	12%	26%	15%	2%
	Seacoast/Border	24%	27%	11%	25%	13%	2%
Total		23%	20%	11%	31%	14%	2%

Timing of Afghanistan Withdrawal					
		Stay Indefinitely	Ensure Safety	Overdue	Shouldn't Have Been There
Gender	Female	8%	60%	13%	19%
	Male	10%	55%	16%	19%
Age	18-34	8%	50%	11%	30%
	35-54	10%	57%	13%	20%
	55-64	11%	61%	13%	15%
	65+	6%	61%	18%	15%
Education	High School or Less	11%	57%	10%	22%
	Some College/Associates Degree	9%	60%	14%	17%
	College Graduate	8%	58%	15%	19%
	Graduate/Professional School	8%	55%	16%	21%
Ideology	Very Conservative	15%	74%	1%	10%
	Somewhat Conservative	15%	71%	6%	9%
	Moderate	8%	46%	13%	33%
	Somewhat Liberal	3%	53%	26%	19%
	Very Liberal	4%	36%	23%	37%
Party Registration	Democratic	4%	47%	24%	24%
	Republican	15%	72%	3%	11%
	Undeclared	8%	56%	14%	22%
Party Identification	Democratic	4%	44%	25%	26%
	Republican	15%	72%	3%	11%
	Swing	5%	60%	10%	24%
Congressional District	CD-1	9%	60%	13%	18%
	CD-2	9%	56%	15%	20%
Region	North Country/Lakes	14%	59%	12%	16%
	Monadnock/Dartmouth	7%	68%	11%	15%
	Merrimack Valley	9%	55%	15%	21%
	Seacoast/Border	8%	58%	14%	19%
Total		9%	58%	14%	19%

Responsibility for Afghanistan Situation						
		Bush	Obama	Trump	Biden	Unsure
Gender	Female	30%	4%	16%	37%	14%
	Male	25%	4%	11%	52%	8%
Age	18-34	44%	3%	6%	40%	7%
	35-54	28%	4%	11%	48%	8%
	55-64	22%	5%	14%	47%	12%
	65+	23%	3%	19%	39%	16%
Education	High School or Less	26%	6%	10%	49%	9%
	Some College/Associates Degree	24%	4%	12%	51%	9%
	College Graduate	28%	3%	14%	42%	13%
	Graduate/Professional School	33%	3%	17%	33%	14%
Ideology	Very Conservative	3%	7%		87%	3%
	Somewhat Conservative	7%	6%	5%	75%	7%
	Moderate	33%	4%	11%	39%	13%
	Somewhat Liberal	41%	1%	27%	11%	19%
	Very Liberal	63%	1%	20%	5%	12%
Party Registration	Democratic	49%	1%	24%	9%	17%
	Republican	5%	7%	1%	83%	3%
	Undeclared	27%	4%	14%	42%	13%
Party Identification	Democratic	49%	1%	25%	8%	17%
	Republican	5%	7%	2%	81%	4%
	Swing	19%	1%	8%	54%	18%
Congressional District	CD-1	26%	4%	13%	44%	13%
	CD-2	29%	4%	14%	44%	9%
Region	North Country/Lakes	21%	5%	10%	45%	19%
	Monadnock/Dartmouth	25%	4%	9%	56%	7%
	Merrimack Valley	29%	4%	15%	41%	10%
	Seacoast/Border	28%	3%	14%	44%	11%
Total		27%	4%	13%	44%	11%

Accept Afghan Refugees				
		All	Some	None
Gender	Female	38%	54%	8%
	Male	36%	55%	9%
Age	18-34	45%	44%	11%
	35-54	37%	55%	9%
	55-64	37%	52%	10%
	65+	33%	63%	4%
Education	High School or Less	29%	59%	12%
	Some College/Associates Degree	32%	58%	11%
	College Graduate	40%	54%	6%
	Graduate/Professional School	49%	47%	4%
Ideology	Very Conservative	17%	65%	19%
	Somewhat Conservative	24%	66%	10%
	Moderate	27%	60%	13%
	Somewhat Liberal	49%	49%	1%
	Very Liberal	72%	26%	2%
Party Registration	Democratic	55%	43%	2%
	Republican	20%	63%	17%
	Undeclared	36%	58%	6%
Party Identification	Democratic	55%	44%	1%
	Republican	20%	64%	16%
	Swing	25%	68%	7%
Congressional District	CD-1	37%	56%	7%
	CD-2	38%	52%	10%
Region	North Country/Lakes	30%	57%	14%
	Monadnock/Dartmouth	40%	49%	11%
	Merrimack Valley	36%	57%	8%
	Seacoast/Border	40%	53%	7%
Total		37%	54%	8%

Afghanistan Impact on Election Views				
		Inclined More Democratic	Inclined More Republican	No Difference
Gender	Female	16%	38%	46%
	Male	11%	49%	40%
Age	18-34	9%	39%	52%
	35-54	11%	46%	43%
	55-64	11%	44%	45%
	65+	23%	41%	36%
Education	High School or Less	11%	57%	32%
	Some College/Associates Degree	13%	49%	38%
	College Graduate	14%	38%	48%
	Graduate/Professional School	18%	30%	52%
Ideology	Very Conservative		83%	17%
	Somewhat Conservative	4%	73%	24%
	Moderate	8%	43%	49%
	Somewhat Liberal	28%	11%	62%
	Very Liberal	28%	4%	68%
Party Registration	Democratic	30%	8%	62%
	Republican	1%	77%	22%
	Undeclared	10%	45%	44%
Party Identification	Democratic	27%	7%	65%
	Republican	1%	80%	20%
	Swing	3%	55%	43%
Congressional District	CD-1	14%	44%	42%
	CD-2	14%	42%	44%
Region	North Country/Lakes	8%	49%	43%
	Monadnock/Dartmouth	7%	45%	48%
	Merrimack Valley	14%	41%	45%
	Seacoast/Border	17%	43%	40%
Total		14%	43%	43%

Vaccine Mandate				
		Support	Oppose	Unsure
Gender	Female	57%	40%	2%
	Male	43%	53%	4%
Age	18-34	47%	49%	4%
	35-54	45%	52%	2%
	55-64	47%	49%	4%
	65+	62%	36%	2%
Education	High School or Less	36%	61%	3%
	Some College/Associates Degree	43%	52%	4%
	College Graduate	55%	43%	3%
	Graduate/Professional School	67%	32%	1%
Ideology	Very Conservative	10%	88%	2%
	Somewhat Conservative	28%	69%	3%
	Moderate	37%	59%	5%
	Somewhat Liberal	83%	14%	3%
	Very Liberal	89%	8%	3%
Party Registration	Democratic	85%	12%	3%
	Republican	17%	80%	2%
	Undeclared	48%	49%	3%
Party Identification	Democratic	84%	13%	3%
	Republican	17%	80%	3%
	Swing	30%	66%	3%
Congressional District	CD-1	50%	46%	3%
	CD-2	51%	47%	3%
Region	North Country/Lakes	42%	57%	1%
	Monadnock/Dartmouth	37%	60%	3%
	Merrimack Valley	55%	43%	3%
	Seacoast/Border	52%	44%	4%
Total		50%	47%	3%

Vaccine Mandate						
		Strongly Support	Somewhat Support	Somewhat Oppose	Strongly Oppose	Unsure
Gender	Female	45%	12%	7%	34%	2%
	Male	32%	11%	9%	44%	4%
Age	18-34	39%	8%	6%	42%	4%
	35-54	30%	15%	9%	43%	2%
	55-64	36%	11%	7%	42%	4%
	65+	52%	11%	9%	27%	2%
Education	High School or Less	28%	8%	6%	55%	3%
	Some College/Associates Degree	33%	10%	9%	44%	4%
	College Graduate	41%	13%	9%	34%	3%
	Graduate/Professional School	52%	15%	7%	25%	1%
Ideology	Very Conservative	5%	5%	9%	79%	2%
	Somewhat Conservative	15%	13%	11%	58%	3%
	Moderate	30%	7%	8%	50%	5%
	Somewhat Liberal	66%	17%	6%	8%	3%
	Very Liberal	78%	11%	3%	5%	3%
Party Registration	Democratic	71%	14%	4%	8%	3%
	Republican	7%	10%	11%	69%	2%
	Undeclared	36%	11%	9%	40%	3%
Party Identification	Democratic	70%	14%	4%	8%	3%
	Republican	8%	9%	12%	68%	3%
	Swing	21%	9%	6%	61%	3%
Congressional District	CD-1	38%	12%	9%	37%	3%
	CD-2	39%	11%	7%	40%	3%
Region	North Country/Lakes	32%	10%	11%	45%	1%
	Monadnock/Dartmouth	31%	6%	10%	50%	3%
	Merrimack Valley	41%	13%	6%	36%	3%
	Seacoast/Border	40%	12%	8%	36%	4%
Total		39%	12%	8%	39%	3%

Timing of Booster Shot					
		ASAP	When Convenient	No	Decline to Answer
Gender	Female	56%	10%	25%	9%
	Male	48%	12%	30%	10%
Age	18-34	49%	10%	37%	4%
	35-54	45%	12%	33%	10%
	55-64	48%	13%	27%	12%
	65+	67%	9%	15%	10%
Education	High School or Less	32%	13%	42%	14%
	Some College/Associates Degree	49%	9%	31%	10%
	College Graduate	57%	12%	23%	7%
	Graduate/Professional School	66%	13%	15%	7%
Ideology	Very Conservative	16%	11%	55%	18%
	Somewhat Conservative	33%	14%	40%	13%
	Moderate	37%	15%	36%	13%
	Somewhat Liberal	82%	9%	5%	4%
	Very Liberal	85%	8%	7%	0%
Party Registration	Democratic	82%	8%	7%	3%
	Republican	24%	12%	49%	15%
	Undeclared	49%	13%	27%	10%
Party Identification	Democratic	81%	9%	7%	3%
	Republican	24%	14%	48%	15%
	Swing	34%	13%	34%	20%
Congressional District	CD-1	52%	12%	25%	10%
	CD-2	52%	10%	29%	8%
Region	North Country/Lakes	47%	8%	28%	17%
	Monadnock/Dartmouth	47%	9%	40%	4%
	Merrimack Valley	53%	14%	24%	9%
	Seacoast/Border	54%	11%	27%	9%
Total		52%	11%	27%	9%

If the election for US Senate were today, and the candidates were Maggie Hassan and Chris Sununu, for whom would you vote?

		Hassan	Sununu	Someone Else	Unsure
Gender	Female	46%	44%	5%	4%
	Male	34%	55%	7%	4%
Age	18-34	46%	40%	10%	3%
	35-54	36%	53%	7%	4%
	55-64	37%	53%	6%	4%
	65+	46%	47%	2%	5%
Education	High School or Less	31%	62%	5%	2%
	Some College/Associates Degree	32%	55%	7%	6%
	College Graduate	44%	47%	6%	3%
	Graduate/Professional School	57%	34%	5%	4%
Ideology	Very Conservative	1%	91%	6%	1%
	Somewhat Conservative	9%	85%	4%	3%
	Moderate	24%	45%	20%	11%
	Somewhat Liberal	77%	14%	4%	5%
	Very Liberal	90%	5%	3%	1%
Party Registration	Democratic	83%	11%	4%	2%
	Republican	2%	89%	7%	1%
	Undeclared	34%	50%	8%	8%
Party Identification	Democratic	80%	11%	4%	5%
	Republican	3%	89%	7%	2%
	Swing	12%	63%	17%	9%
Congressional District	CD-1	41%	49%	5%	5%
	CD-2	40%	50%	7%	3%
Region	North Country/Lakes	33%	58%	5%	4%
	Monadnock/Dartmouth	29%	53%	15%	3%
	Merrimack Valley	43%	49%	5%	4%
	Seacoast/Border	43%	47%	6%	5%
Total		40%	49%	6%	4%

DEMOGRAPHICS

August 24-26, 2021

n = 1855

New Hampshire Registered Voters

MoE +/- 2.3%

Gender			
		Frequency	Percent
	Female	965	52
	Male	890	48
	Total	1855	100

Age			
		Frequency	Percent
	18-34	289	16
	35-54	601	32
	55-64	484	26
	65+	480	26
	Total	1855	100

Education			
		Frequency	Percent
	High School or Less	310	17
	Some College/Associates Degree	623	34
	College Graduate	516	28
	Graduate/Professional School	406	22
	Total	1855	100

Ideology			
		Frequency	Percent
	Very Conservative	282	15
	Somewhat Conservative	551	30
	Moderate	239	13
	Somewhat Liberal	493	27
	Very Liberal	289	16
	Conservative	833	45
	Moderate	239	13
	Liberal	783	42
	Total	1855	100

Party Registration			
		Frequency	Percent
	Democratic	633	34
	Republican	607	33
	Undeclared	616	33
	Total	1855	100
CD-1	Democratic	336	34
	Republican	345	35
	Undeclared	31	31
	Total	991	100
CD-2	Democratic	297	34
	Republican	261	30
	Undeclared	306	35
	Total	864	100

Party Identification			
		Frequency	Percent
	Democratic	895	48
	Republican	845	46
	Swing	115	6
	Total	1855	100
CD-1	Democratic	463	47
	Republican	471	48
	Swing	57	6
	Total	991	100
CD-2	Democratic	433	50
	Republican	373	43
	Swing	58	7
	Total	864	100

Congressional District			
		Frequency	Percent
	CD-1	991	53
	CD-2	864	47
	Total	1855	100

Region			
		Frequency	Percent
	North Country/Lakes	200	11
	Monadnock/Dartmouth	185	10
	Merrimack Valley	727	39
	Seacoast/Border	742	40
	Total	1855	100

ABOUT THE SAINT ANSELM COLLEGE SURVEY CENTER

The Saint Anselm College Survey Center (SACSC) was founded in the wake of the 2016 election, and launched its first poll in February 2018 as the midterm elections were getting underway. Housed within the New Hampshire Institute of Politics at Saint Anselm College, the Center conducts quarterly polls of New Hampshire voter attitudes and additional polls as circumstances warrant. This research supports the academic mission of the College, and provides students with a practical education in survey techniques while providing the public at large with insight into political opinion trends that impact the state's federal and gubernatorial elections. The Center's political surveys were the most accurate New Hampshire election polling throughout the 2020 cycle. To support its operations, the Center performs commissioned research on behalf of nonprofit organizations and corporations.

For more information on SACSC, please visit:
anselm.edu/new-hampshire-institute-politics/polling

For inquiries, please contact: nhioppoll@anselm.edu