

SAINT ANSELM  
COLLEGE

---

NEW HAMPSHIRE  
INSTITUTE OF POLITICS

# A SURVEY OF NEW HAMPSHIRE VOTER ATTITUDES

---

CONDUCTED  
March 4-6, 2021

**Neil Levesque**  
EXECUTIVE DIRECTOR,  
NEW HAMPSHIRE INSTITUTE  
OF POLITICS

FACULTY ADVISOR

**Tauna Sisco, PhD**  
CHAIR, DEPARTMENT OF SOCIOLOGY

# SURVEY NOTES

---

These results are from the Saint Anselm College Survey Center poll based on online surveys of 871 New Hampshire registered voters. Surveys were collected between March 4th and 6th, 2021, from cell phone users randomly drawn from a sample of registered voters reflecting the demographic and partisan characteristics of the voting population. Names were presented in random order for each of the political leader series (e.g. job approval). The survey has an overall margin of sampling error of +/- 3.3% with a confidence interval of 95%; the margin of sampling error for questions specific to congressional districts are 4.7% for each district. The data are weighted for age, gender, geography, and education based on a voter demographic model derived from historical voting patterns, but are not weighted by party registration or party identification.

The Survey Center continually studies the components that construct a poll, such as interview techniques, voter modeling, and collection methods, in order to refine its methodology and adjust to changes in voter and respondent behavior. This poll departs from the Center's previous use of live telephone interviews and implements an online collection methodology that has been under ongoing study and refinement. Comparison with previous Center polling employing telephone interviews should be evaluated in this context.

# EXECUTIVE SUMMARY

---

New Hampshire Institute of Politics Executive Director Neil Levesque summarized the results, saying, “Six weeks into the Biden Administration, New Hampshire is already seeing a significant change in political dynamics as the new president settles in as the central focus of voter attention. Although Democrats still enjoy a numerical advantage among voters, the independent nature of our state tends to be suspicious of a unified federal government, and this may be contributing to the relatively short duration of President Biden’s honeymoon period.

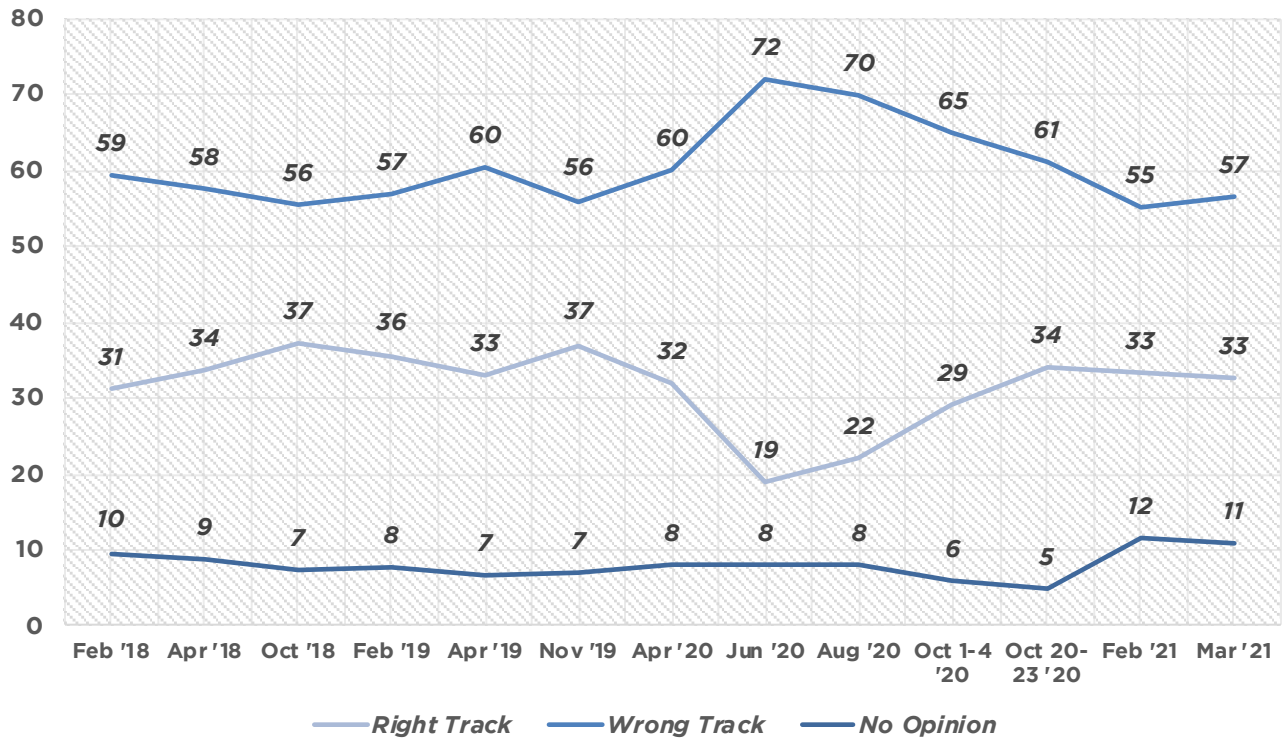
“Biden’s job approval has narrowed significantly since our last poll, and is now just slightly better than even at 50%-49%. At the same time, Democrats enjoy a 48%-40% advantage on the generic congressional ballot, reflecting the general voter preference for the Democratic brand. Caught in the middle of these competing trends are New Hampshire’s senators, who have seen their job approval slip in the last month. Voters now approve of the job performance of Senator Jeanne Shaheen by a margin of 51%-43%, down from 54%-38%. Senator Maggie Hassan has narrowed even closer to 47%-44%, down from 49%-40%. By contrast, New Hampshire’s Members of Congress, a bit further removed from the top of the ticket, have actually improved their standing somewhat: Congressman Chris Pappas now enjoys a 45%-39% job approval, up from 43%-38%; while Congresswoman Annie Kuster sits at 48%-39%, up from 46%-40%.

“This sets the stage for what may become one of the most closely-watched races in the nation this cycle as Governor Chris Sununu has signaled the possibility of challenging incumbent Senator Maggie Hassan. In a hypothetical matchup between Hassan and Sununu, respondents expressed a preference for Sununu by a margin of 47%-41%. This is driven by a significant disparity in popularity between the two: Sununu’s job approval has fallen somewhat since our last poll, but still sits at 67%-31%. His approval comes from virtually every demographic group, and even Democratic-identifying respondents disapprove of his performance by only a narrow margin, 48%-50%. However, if a hypothetical Sununu challenge did become reality, he would necessarily trade a relatively nonpartisan image for one significantly more ideological and consequently face inevitable voter polarization. So while Hassan’s relatively low standing with voters may make her vulnerable to a strong challenge, she does still benefit from her party’s strength as reflected in the generic congressional ballot.

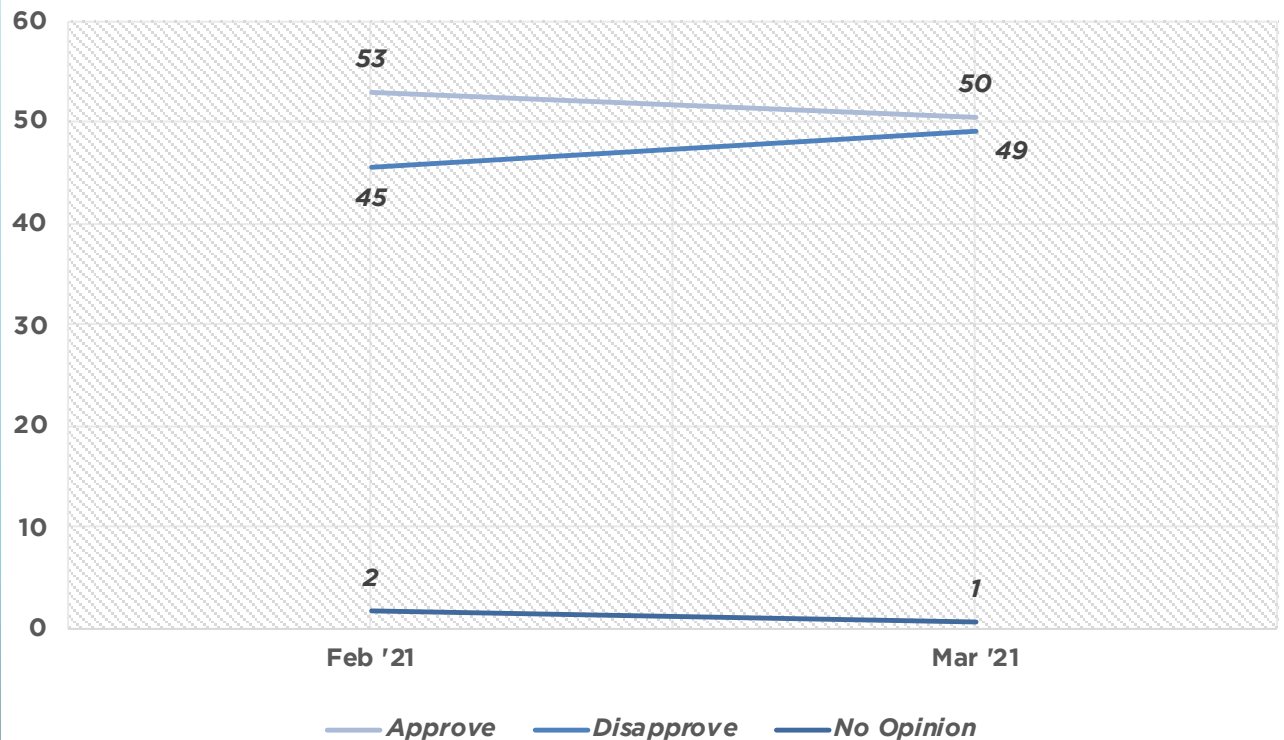
“Former President Donald Trump still looms large in the Republican Party, as 71% of Republican-identifying respondents would like him to continue to play a significant role in the party going forward. This may have a significant impact on election dynamics this cycle, as Trump could continue to get as much attention as Biden in setting the tone and focus of the upcoming races. For their part, 45% of Democratic-identifying respondents view Vice President Kamala Harris as their preferred heir-apparent to Biden should he decline a re-election bid.”

“Buckle up,” concluded Levesque.

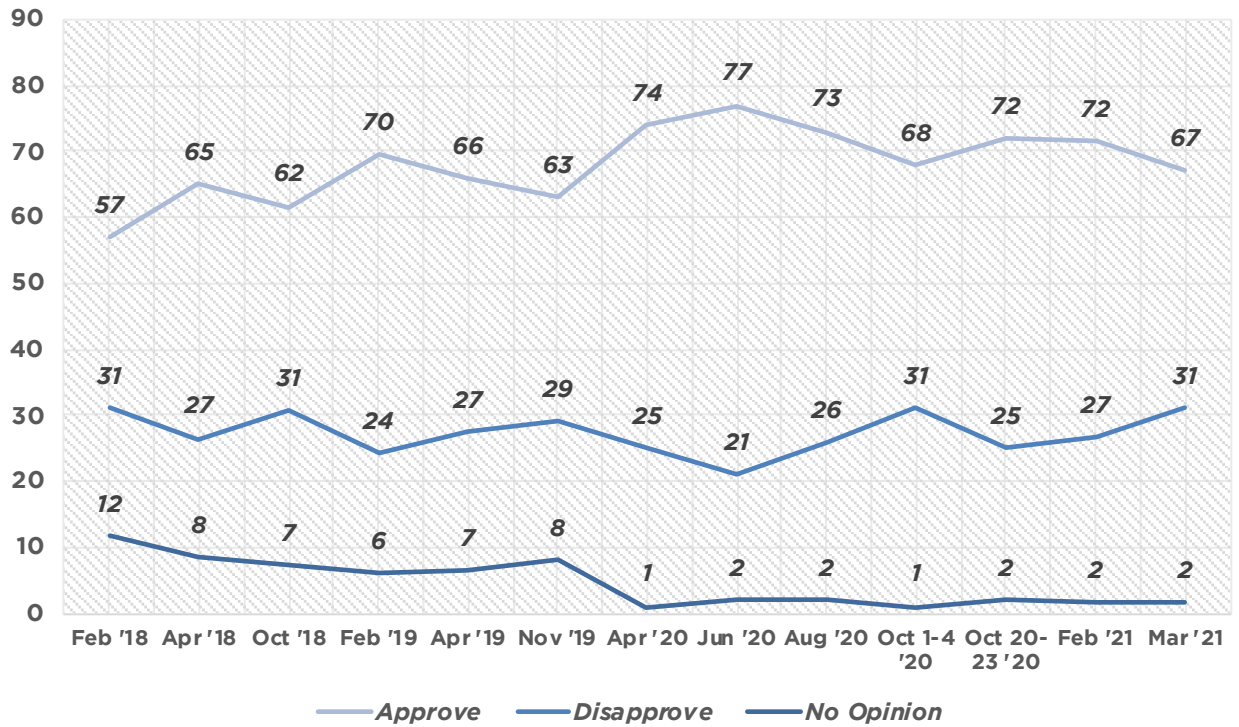
## RIGHT TRACK VS. WRONG TRACK (%)



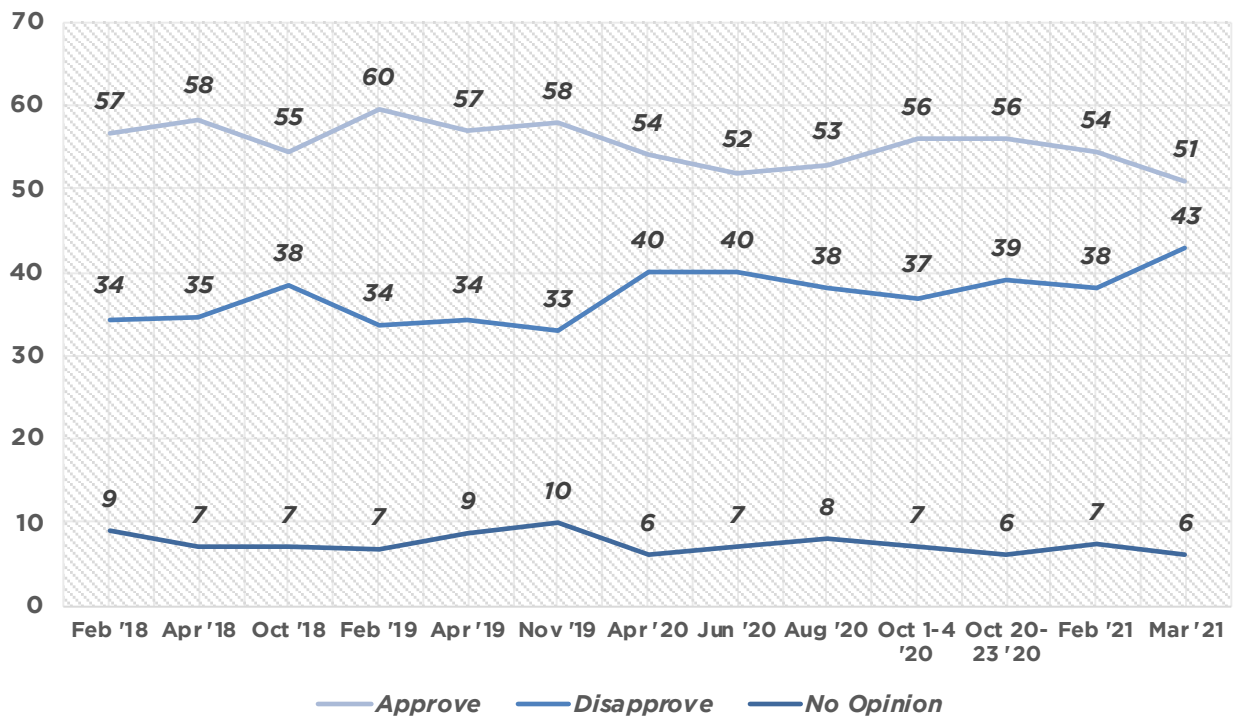
## BIDEN JOB APPROVAL (%)



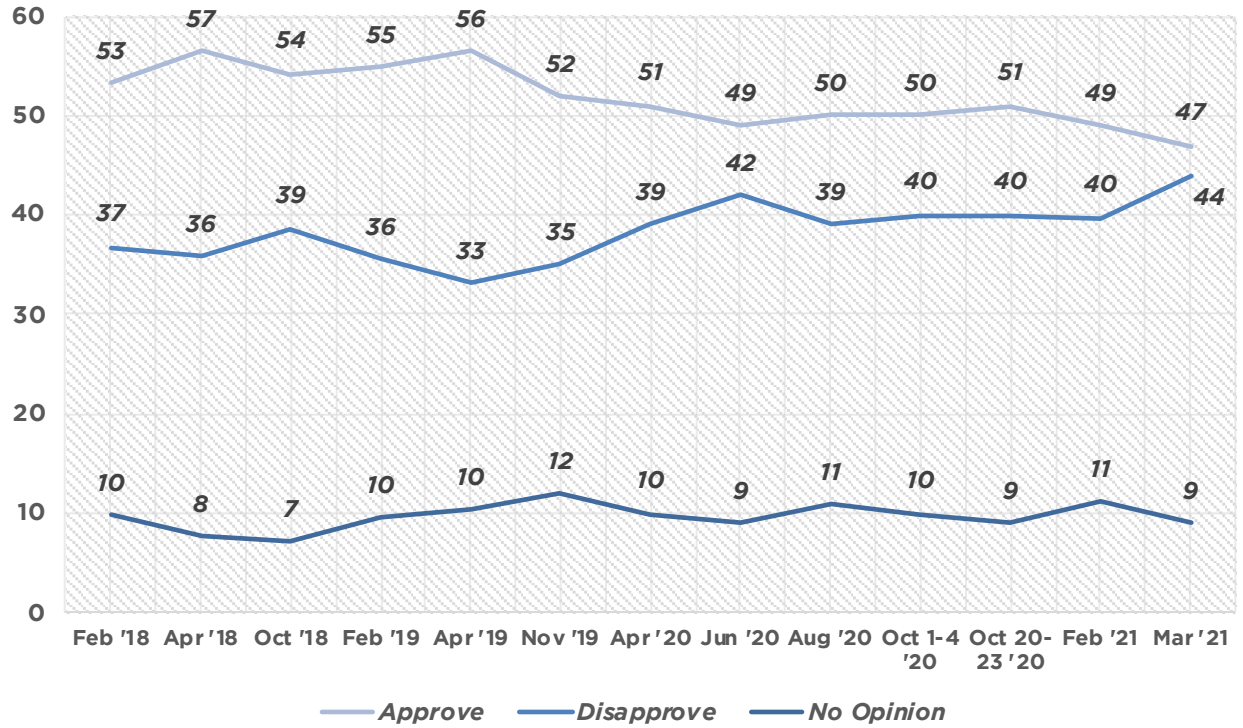
## SUNUNU JOB APPROVAL (%)



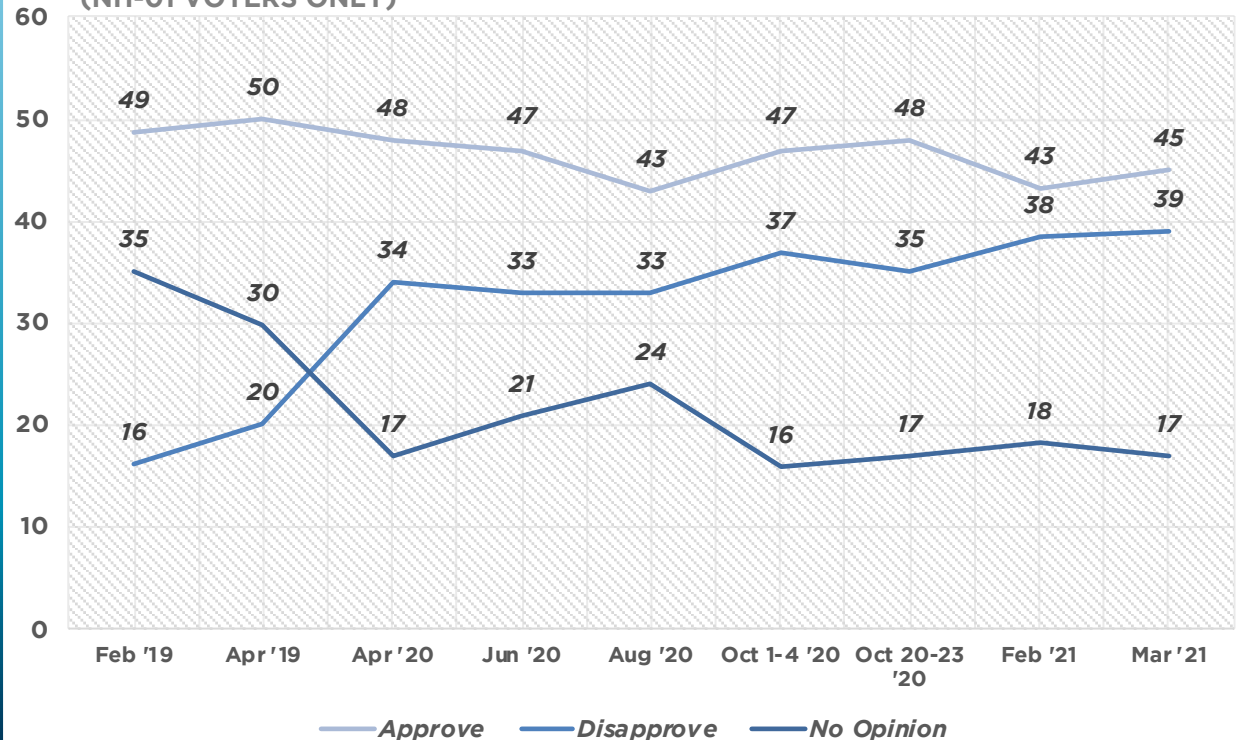
## SHAHEEN JOB APPROVAL (%)



## HASSAN JOB APPROVAL (%)

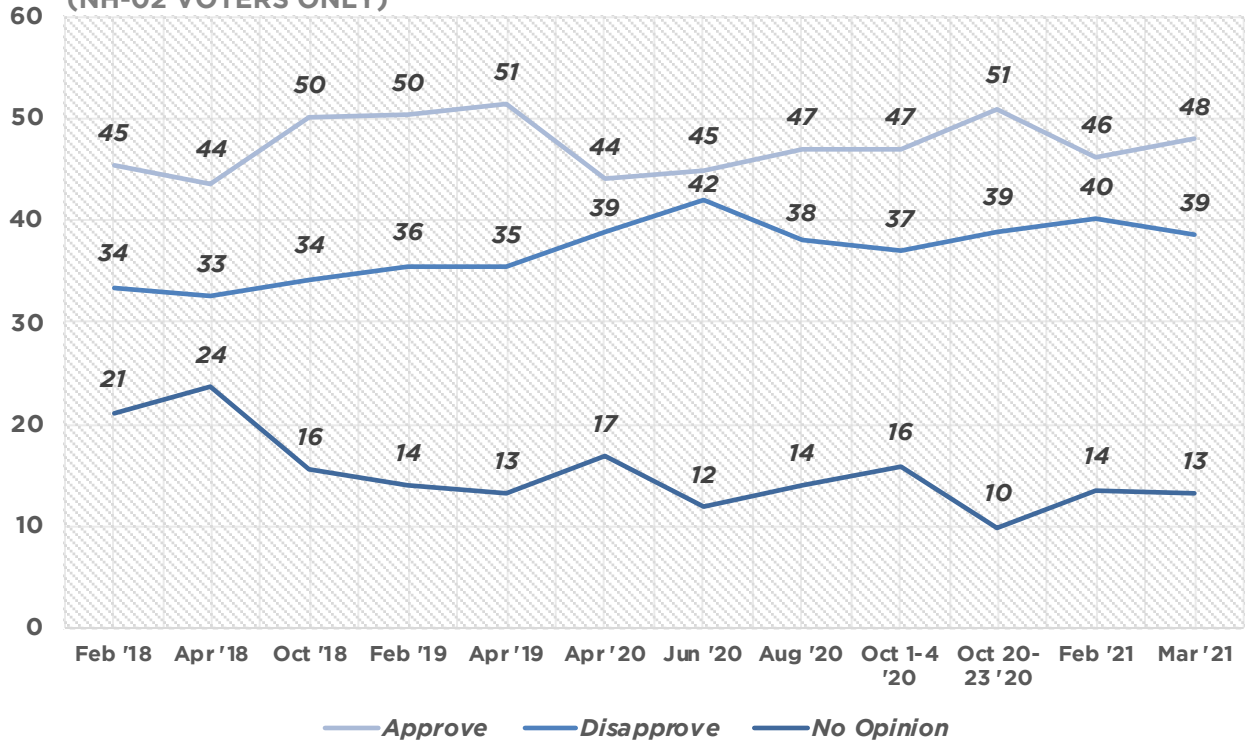


## PAPPAS JOB APPROVAL (%) (NH-01 VOTERS ONLY)



# KUSTER JOB APPROVAL (%)

(NH-02 VOTERS ONLY)



# WEIGHTED MARGINALS

March 4-6, 2021

n=871

New Hampshire Registered Voters

Margin of Error= +/- 3.3%

Would you say that things in our country are heading in the right direction, or have things gotten off on the wrong track?			
		<i>Frequency</i>	<i>Percent</i>
	Right Track	283	33
	Wrong Track	493	57
	Unsure	95	11
	Total	871	100

If the election for Congress were held today, for which candidate would you likely vote?			
		<i>Frequency</i>	<i>Percent</i>
	Democratic	417	48
	Republican	344	40
	Other	31	4
	Unsure	78	9
	Total	871	100

## IMAGE

---

Joe Biden Image			
		<i>Frequency</i>	<i>Percent</i>
	Strongly Favorable	277	32
	Somewhat Favorable	161	18
	Somewhat Unfavorable	61	7
	Strongly Unfavorable	365	42
	No Opinion	7	1
	Favorable	438	50
	Unfavorable	426	49
	No Opinion	7	1
	Total	871	100



<b>Chris Sununu Image</b>			
		<i>Frequency</i>	<i>Percent</i>
	<b>Strongly Favorable</b>	246	28
	<b>Somewhat Favorable</b>	320	37
	<b>Somewhat Unfavorable</b>	175	20
	<b>Strongly Unfavorable</b>	113	13
	<b>No Opinion</b>	17	2
	<b>Never Heard Of</b>	0	0
	<b>Favorable</b>	566	65
	<b>Unfavorable</b>	288	33
	<b>No Opinion</b>	17	2
	<b>Total</b>	871	100

<b>Jeanne Shaheen Image</b>			
		<i>Frequency</i>	<i>Percent</i>
	<b>Strongly Favorable</b>	271	31
	<b>Somewhat Favorable</b>	195	22
	<b>Somewhat Unfavorable</b>	125	14
	<b>Strongly Unfavorable</b>	249	29
	<b>No Opinion</b>	30	3
	<b>Never Heard Of</b>	1	0
	<b>Favorable</b>	465	53
	<b>Unfavorable</b>	374	43
	<b>No Opinion</b>	31	4
	<b>Total</b>	871	100

<b>Maggie Hassan Image</b>			
		<i>Frequency</i>	<i>Percent</i>
	<b>Strongly Favorable</b>	210	24
	<b>Somewhat Favorable</b>	203	23
	<b>Somewhat Unfavorable</b>	135	15
	<b>Strongly Unfavorable</b>	261	30
	<b>No Opinion</b>	56	6
	<b>Never Heard Of</b>	5	1
	<b>Favorable</b>	413	47
	<b>Unfavorable</b>	396	45
	<b>No Opinion</b>	61	7
	<b>Total</b>	871	100

<b>Chris Pappas Image</b>			
		<i>Frequency</i>	<i>Percent</i>
	<b>Strongly Favorable</b>	89	20
	<b>Somewhat Favorable</b>	119	27
	<b>Somewhat Unfavorable</b>	49	11
	<b>Strongly Unfavorable</b>	122	28
	<b>No Opinion</b>	55	13
	<b>Never Heard Of</b>	4	1
	<b>Favorable</b>	208	47
	<b>Unfavorable</b>	172	39
	<b>No Opinion</b>	59	13
	<b>Total</b>	439	100

<b>Annie Kuster Image</b>			
		<i>Frequency</i>	<i>Percent</i>
	<b>Strongly Favorable</b>	101	23
	<b>Somewhat Favorable</b>	102	24
	<b>Somewhat Unfavorable</b>	56	13
	<b>Strongly Unfavorable</b>	125	29
	<b>No Opinion</b>	41	10
	<b>Never Heard Of</b>	7	2
	<b>Favorable</b>	203	47
	<b>Unfavorable</b>	181	42
	<b>No Opinion</b>	48	11
	<b>Total</b>	432	100

## JOB APPROVAL

<b>President Joe Biden Job Approval</b>			
		<i>Frequency</i>	<i>Percent</i>
	<b>Strongly Approve</b>	308	35
	<b>Somewhat Approve</b>	132	15
	<b>Somewhat Disapprove</b>	56	6
	<b>Strongly Disapprove</b>	371	43
	<b>No Opinion</b>	5	1
	<b>Approve</b>	439	50
	<b>Disapprove</b>	427	49
	<b>No Opinion</b>	5	1
	<b>Total</b>	871	100

<b>Governor Chris Sununu Job Approval</b>			
		<i>Frequency</i>	<i>Percent</i>
	<b>Strongly Approve</b>	257	30
	<b>Somewhat Approve</b>	328	38
	<b>Somewhat Disapprove</b>	169	19
	<b>Strongly Disapprove</b>	103	12
	<b>No Opinion</b>	14	2
	<b>Never Heard Of</b>	0	0
	<b>Approve</b>	585	67
	<b>Disapprove</b>	272	31
	<b>No Opinion</b>	14	2
	<b>Total</b>	871	100

<b>Senator Jeanne Shaheen Job Approval</b>			
		<i>Frequency</i>	<i>Percent</i>
	<b>Strongly Approve</b>	271	31
	<b>Somewhat Approve</b>	175	20
	<b>Somewhat Disapprove</b>	128	15
	<b>Strongly Disapprove</b>	245	28
	<b>No Opinion</b>	52	6
	<b>Never Heard Of</b>	1	0
	<b>Approve</b>	445	51
	<b>Disapprove</b>	373	43
	<b>No Opinion</b>	53	6
	<b>Total</b>	871	100

### Senator Maggie Hassan Job Approval

		<i>Frequency</i>	<i>Percent</i>
	<b>Strongly Approve</b>	214	25
	<b>Somewhat Approve</b>	192	22
	<b>Somewhat Disapprove</b>	134	15
	<b>Strongly Disapprove</b>	253	29
	<b>No Opinion</b>	75	9
	<b>Never Heard Of</b>	3	0
	<b>Approve</b>	406	47
	<b>Disapprove</b>	387	44
	<b>No Opinion</b>	78	9
	<b>Total</b>	871	100

### Congressman Chris Pappas Job Approval

		<i>Frequency</i>	<i>Percent</i>
	<b>Strongly Approve</b>	87	20
	<b>Somewhat Approve</b>	111	25
	<b>Somewhat Disapprove</b>	45	10
	<b>Strongly Disapprove</b>	124	28
	<b>No Opinion</b>	70	16
	<b>Never Heard Of</b>	2	1
	<b>Approve</b>	197	45
	<b>Disapprove</b>	169	39
	<b>No Opinion</b>	72	17
	<b>Total</b>	439	100

### Congresswoman Annie Kuster Job Approval

		<i>Frequency</i>	<i>Percent</i>
	<b>Strongly Approve</b>	102	24
	<b>Somewhat Approve</b>	105	24
	<b>Somewhat Disapprove</b>	47	11
	<b>Strongly Disapprove</b>	120	28
	<b>No Opinion</b>	54	12
	<b>Never Heard Of</b>	4	1
	<b>Approve</b>	208	48
	<b>Disapprove</b>	167	39
	<b>No Opinion</b>	58	13
	<b>Total</b>	432	100

## POLL QUESTIONS

<b>If the election for US Senate were held today, and the candidates were Maggie Hassan and Chris Sununu, for whom would you vote?</b>			
		<i>Frequency</i>	<i>Percent</i>
	<b>Maggie Hassan</b>	358	41
	<b>Chris Sununu</b>	406	47
	<b>Someone Else</b>	59	7
	<b>Unsure</b>	48	6
	<b>Total</b>	871	100

<b>Do you think Donald Trump should continue to play an important role in the Republican Party, or is it time for the Party to move on? (Republican ID Only)</b>			
		<i>Frequency</i>	<i>Percent</i>
	<b>Important Role</b>	262	71
	<b>Move On</b>	81	22
	<b>Unsure</b>	28	7
	<b>Total</b>	370	100

<b>If Joe Biden decides not to run for re-election, do you think the Democratic Party should nominate Kamala Harris for president, or would you support someone else? (Democratic ID Only)</b>			
		<i>Frequency</i>	<i>Percent</i>
	<b>Harris</b>	187	45
	<b>Someone Else</b>	107	26
	<b>Unsure</b>	125	30
	<b>Total</b>	418	100

# WEIGHTED TABLES

March 4-6, 2021

n=871

New Hampshire Registered Voters

Margin of Error= +/- 3.3%

Would you say that things in our country are heading in the right direction, or have things gotten off on the wrong track?				
		Right Track	Wrong Track	Unsure
Gender	Female	41%	47%	12%
	Male	24%	67%	9%
Age	18-34	19%	65%	16%
	35-54	33%	56%	11%
	55-64	31%	64%	5%
	65+	42%	45%	13%
Education	High School or Less	32%	60%	8%
	Some College/Associates Degree	28%	63%	9%
	College Graduate	36%	52%	12%
	Graduate/Professional School	35%	49%	16%
Ideology	Very Conservative	2%	95%	3%
	Somewhat Conservative	8%	85%	7%
	Moderate	23%	67%	9%
	Somewhat Liberal	57%	25%	18%
	Very Liberal	62%	23%	15%
Party Registration	Democratic	61%	23%	15%
	Republican	5%	89%	6%
	Undeclared	29%	60%	11%
Party Identification	Democratic	60%	25%	15%
	Republican	6%	89%	5%
	Swing	13%	73%	13%
Congressional District	CD-1	33%	56%	11%
	CD-2	32%	57%	11%
Region	North Country/Lakes	39%	55%	5%
	Monadnock/Dartmouth	24%	57%	19%
	Merrimack Valley	33%	57%	10%
	Seacoast/Border	32%	57%	11%
Total		33%	57%	11%

**If the election for Congress were held today, for which candidate would you likely vote?**

		<i>Democratic</i>	<i>Republican</i>	<i>Other</i>	<i>Unsure</i>
<b>Gender</b>	<b>Female</b>	59%	30%	2%	9%
	<b>Male</b>	36%	50%	5%	9%
<b>Age</b>	<b>18-34</b>	46%	33%	10%	10%
	<b>35-54</b>	47%	41%	4%	8%
	<b>55-64</b>	36%	51%	2%	10%
	<b>65+</b>	61%	30%	1%	8%
<b>Education</b>	<b>High School or Less</b>	39%	51%		10%
	<b>Some College/Associates Degree</b>	43%	41%	5%	11%
	<b>College Graduate</b>	49%	39%	3%	9%
	<b>Graduate/Professional School</b>	59%	29%	5%	6%
<b>Ideology</b>	<b>Very Conservative</b>		96%		4%
	<b>Somewhat Conservative</b>	11%	72%	4%	14%
	<b>Moderate</b>	30%	32%	20%	17%
	<b>Somewhat Liberal</b>	86%	5%	0%	8%
	<b>Very Liberal</b>	95%	1%	1%	2%
<b>Party Registration</b>	<b>Democratic</b>	95%	2%	0%	3%
	<b>Republican</b>	4%	87%	1%	9%
	<b>Undeclared</b>	42%	36%	8%	14%
<b>Party Identification</b>	<b>Democratic</b>	92%	2%	1%	5%
	<b>Republican</b>	5%	84%	2%	9%
	<b>Swing</b>	19%	31%	21%	30%
<b>Congressional District</b>	<b>CD-1</b>	48%	39%	3%	10%
	<b>CD-2</b>	48%	40%	4%	8%
<b>Region</b>	<b>North Country/Lakes</b>	46%	44%	1%	10%
	<b>Monadnock/Dartmouth</b>	43%	47%	6%	5%
	<b>Merrimack Valley</b>	50%	38%	4%	9%
	<b>Seacoast/Border</b>	49%	38%	4%	9%
<b>Total</b>		48%	40%	4%	9%

## Joe Biden Image

		<i>Favorable</i>	<i>Unfavorable</i>	<i>No Opinion</i>
<b>Gender</b>	<b>Female</b>	61%	38%	2%
	<b>Male</b>	39%	61%	0%
<b>Age</b>	<b>18-34</b>	38%	63%	
	<b>35-54</b>	50%	49%	1%
	<b>55-64</b>	41%	58%	1%
	<b>65+</b>	68%	31%	0%
<b>Education</b>	<b>High School or Less</b>	39%	59%	2%
	<b>Some College/Associates Degree</b>	44%	56%	0%
	<b>College Graduate</b>	53%	47%	1%
	<b>Graduate/Professional School</b>	66%	33%	1%
<b>Ideology</b>	<b>Very Conservative</b>	1%	99%	
	<b>Somewhat Conservative</b>	16%	82%	2%
	<b>Moderate</b>	36%	63%	1%
	<b>Somewhat Liberal</b>	91%	8%	1%
	<b>Very Liberal</b>	89%	11%	
<b>Party Registration</b>	<b>Democratic</b>	90%	9%	0%
	<b>Republican</b>	7%	91%	2%
	<b>Undeclared</b>	49%	50%	1%
<b>Party Identification</b>	<b>Democratic</b>	91%	9%	0%
	<b>Republican</b>	8%	91%	1%
	<b>Swing</b>	35%	63%	2%
<b>Congressional District</b>	<b>CD-1</b>	52%	47%	1%
	<b>CD-2</b>	48%	51%	1%
<b>Region</b>	<b>North Country/Lakes</b>	51%	48%	1%
	<b>Monadnock/Dartmouth</b>	41%	59%	
	<b>Merrimack Valley</b>	53%	47%	0%
	<b>Seacoast/Border</b>	50%	49%	2%
<b>Total</b>		50%	49%	1%



### Chris Sununu Image

		<i>Favorable</i>	<i>Unfavorable</i>	<i>No Opinion</i>
<b>Gender</b>	<b>Female</b>	61%	37%	2%
	<b>Male</b>	70%	28%	2%
<b>Age</b>	<b>18-34</b>	49%	49%	2%
	<b>35-54</b>	64%	34%	2%
	<b>55-64</b>	75%	24%	1%
	<b>65+</b>	65%	31%	3%
<b>Education</b>	<b>High School or Less</b>	74%	25%	1%
	<b>Some College/Associates Degree</b>	66%	31%	4%
	<b>College Graduate</b>	65%	35%	1%
	<b>Graduate/Professional School</b>	57%	41%	2%
<b>Ideology</b>	<b>Very Conservative</b>	91%	9%	1%
	<b>Somewhat Conservative</b>	93%	6%	2%
	<b>Moderate</b>	67%	31%	2%
	<b>Somewhat Liberal</b>	52%	45%	3%
	<b>Very Liberal</b>	21%	78%	1%
<b>Party Registration</b>	<b>Democratic</b>	33%	65%	2%
	<b>Republican</b>	88%	10%	2%
	<b>Undeclared</b>	74%	25%	2%
<b>Party Identification</b>	<b>Democratic</b>	40%	57%	3%
	<b>Republican</b>	89%	9%	1%
	<b>Swing</b>	83%	17%	
<b>Congressional District</b>	<b>CD-1</b>	67%	30%	2%
	<b>CD-2</b>	63%	36%	2%
<b>Region</b>	<b>North Country/Lakes</b>	72%	28%	
	<b>Monadnock/Dartmouth</b>	64%	35%	1%
	<b>Merrimack Valley</b>	65%	32%	2%
	<b>Seacoast/Border</b>	63%	34%	3%
<b>Total</b>		65%	33%	2%

## Jeanne Shaheen Image

		<i>Favorable</i>	<i>Unfavorable</i>	<i>No Opinion</i>
<b>Gender</b>	<b>Female</b>	62%	34%	4%
	<b>Male</b>	44%	53%	3%
<b>Age</b>	<b>18-34</b>	44%	49%	7%
	<b>35-54</b>	51%	45%	4%
	<b>55-64</b>	44%	54%	3%
	<b>65+</b>	72%	26%	2%
<b>Education</b>	<b>High School or Less</b>	46%	50%	4%
	<b>Some College/Associates Degree</b>	50%	47%	3%
	<b>College Graduate</b>	54%	42%	5%
	<b>Graduate/Professional School</b>	64%	34%	2%
<b>Ideology</b>	<b>Very Conservative</b>	6%	89%	5%
	<b>Somewhat Conservative</b>	26%	69%	5%
	<b>Moderate</b>	38%	56%	6%
	<b>Somewhat Liberal</b>	91%	6%	2%
	<b>Very Liberal</b>	86%	13%	1%
<b>Party Registration</b>	<b>Democratic</b>	92%	8%	1%
	<b>Republican</b>	15%	80%	5%
	<b>Undeclared</b>	51%	44%	5%
<b>Party Identification</b>	<b>Democratic</b>	90%	9%	2%
	<b>Republican</b>	17%	78%	5%
	<b>Swing</b>	35%	58%	7%
<b>Congressional District</b>	<b>CD-1</b>	54%	42%	3%
	<b>CD-2</b>	52%	44%	4%
<b>Region</b>	<b>North Country/Lakes</b>	53%	45%	2%
	<b>Monadnock/Dartmouth</b>	47%	49%	5%
	<b>Merrimack Valley</b>	56%	39%	4%
	<b>Seacoast/Border</b>	52%	45%	3%
<b>Total</b>		53%	43%	4%

## Maggie Hassan Image

		<i>Favorable</i>	<i>Unfavorable</i>	<i>No Opinion</i>
<b>Age</b>	<b>18-34</b>	38%	50%	12%
	<b>35-54</b>	44%	49%	7%
	<b>55-64</b>	38%	56%	5%
	<b>65+</b>	66%	28%	5%
<b>Education</b>	<b>High School or Less</b>	38%	55%	7%
	<b>Some College/Associates Degree</b>	46%	48%	7%
	<b>College Graduate</b>	46%	43%	10%
	<b>Graduate/Professional School</b>	60%	37%	4%
<b>Ideology</b>	<b>Very Conservative</b>	2%	91%	8%
	<b>Somewhat Conservative</b>	18%	74%	8%
	<b>Moderate</b>	29%	59%	12%
	<b>Somewhat Liberal</b>	84%	9%	7%
	<b>Very Liberal</b>	85%	13%	1%
<b>Party Registration</b>	<b>Democratic</b>	89%	9%	3%
	<b>Republican</b>	9%	83%	8%
	<b>Undeclared</b>	43%	47%	10%
<b>Party Identification</b>	<b>Democratic</b>	84%	11%	5%
	<b>Republican</b>	10%	82%	8%
	<b>Swing</b>	29%	58%	13%
<b>Congressional District</b>	<b>CD-1</b>	46%	46%	8%
	<b>CD-2</b>	49%	44%	6%
<b>Region</b>	<b>North Country/Lakes</b>	49%	50%	1%
	<b>Monadnock/Dartmouth</b>	48%	42%	10%
	<b>Merrimack Valley</b>	50%	44%	6%
	<b>Seacoast/Border</b>	45%	47%	8%
<b>Total</b>		47%	46%	7%

### Chris Pappas Image

		<i>Favorable</i>	<i>Unfavorable</i>	<i>No Opinion</i>
<b>Gender</b>	<b>Female</b>	59%	28%	13%
	<b>Male</b>	36%	49%	14%
<b>Age</b>	<b>18-34</b>	34%	47%	19%
	<b>35-54</b>	47%	39%	14%
	<b>55-64</b>	40%	45%	15%
	<b>65+</b>	62%	29%	9%
<b>Education</b>	<b>High School or Less</b>	43%	48%	10%
	<b>Some College/Associates Degree</b>	46%	40%	14%
	<b>College Graduate</b>	47%	38%	15%
	<b>Graduate/Professional School</b>	53%	35%	12%
<b>Ideology</b>	<b>Very Conservative</b>	6%	84%	10%
	<b>Somewhat Conservative</b>	20%	61%	19%
	<b>Moderate</b>	30%	48%	22%
	<b>Somewhat Liberal</b>	81%	9%	10%
	<b>Very Liberal</b>	86%	10%	5%
<b>Party Registration</b>	<b>Democratic</b>	87%	7%	6%
	<b>Republican</b>	16%	72%	13%
	<b>Undeclared</b>	40%	39%	20%
<b>Party Identification</b>	<b>Democratic</b>	79%	9%	11%
	<b>Republican</b>	13%	73%	14%
	<b>Swing</b>	40%	38%	22%
<b>Region</b>	<b>North Country/Lakes</b>	49%	43%	8%
	<b>Monadnock/Dartmouth</b>	100%		
	<b>Merrimack Valley</b>	52%	36%	12%
	<b>Seacoast/Border</b>	44%	40%	16%
<b>Total</b>		47%	39%	14%

## Annie Kuster Image

		<i>Favorable</i>	<i>Unfavorable</i>	<i>No Opinion</i>
<b>Gender</b>	<b>Female</b>	57%	33%	10%
	<b>Male</b>	35%	53%	12%
<b>Age</b>	<b>18-34</b>	38%	38%	25%
	<b>35-54</b>	45%	43%	13%
	<b>55-64</b>	34%	62%	4%
	<b>65+</b>	69%	24%	6%
<b>Education</b>	<b>High School or Less</b>	39%	43%	18%
	<b>Some College/Associates Degree</b>	42%	50%	8%
	<b>College Graduate</b>	47%	43%	11%
	<b>Graduate/Professional School</b>	64%	26%	10%
<b>Ideology</b>	<b>Very Conservative</b>	5%	87%	8%
	<b>Somewhat Conservative</b>	14%	71%	15%
	<b>Moderate</b>	29%	49%	22%
	<b>Somewhat Liberal</b>	80%	9%	11%
	<b>Very Liberal</b>	90%	8%	2%
<b>Party Registration</b>	<b>Democratic</b>	87%	8%	5%
	<b>Republican</b>	8%	83%	9%
	<b>Undeclared</b>	42%	41%	17%
<b>Party Identification</b>	<b>Democratic</b>	87%	7%	6%
	<b>Republican</b>	8%	79%	13%
	<b>Swing</b>	13%	55%	32%
<b>Region</b>	<b>North Country/Lakes</b>	33%	67%	
	<b>Monadnock/Dartmouth</b>	46%	38%	16%
	<b>Merrimack Valley</b>	48%	41%	11%
	<b>Seacoast/Border</b>	48%	43%	8%
<b>Total</b>		47%	42%	11%

## President Joe Biden Job Approval

		<i>Approve</i>	<i>Disapprove</i>	<i>No Opinion</i>
<b>Gender</b>	<b>Female</b>	61%	38%	0%
	<b>Male</b>	39%	61%	1%
<b>Age</b>	<b>18-34</b>	36%	63%	1%
	<b>35-54</b>	50%	49%	1%
	<b>55-64</b>	42%	58%	
	<b>65+</b>	69%	31%	
<b>Education</b>	<b>High School or Less</b>	38%	62%	
	<b>Some College/Associates Degree</b>	43%	56%	1%
	<b>College Graduate</b>	54%	45%	1%
	<b>Graduate/Professional School</b>	66%	34%	
<b>Ideology</b>	<b>Very Conservative</b>	1%	99%	
	<b>Somewhat Conservative</b>	17%	83%	1%
	<b>Moderate</b>	37%	62%	1%
	<b>Somewhat Liberal</b>	91%	8%	0%
	<b>Very Liberal</b>	88%	12%	
<b>Party Registration</b>	<b>Democratic</b>	91%	9%	
	<b>Republican</b>	8%	91%	1%
	<b>Undeclared</b>	49%	50%	1%
<b>Party Identification</b>	<b>Democratic</b>	91%	9%	
	<b>Republican</b>	9%	91%	1%
	<b>Swing</b>	34%	64%	2%
<b>Congressional District</b>	<b>CD-1</b>	53%	46%	1%
	<b>CD-2</b>	48%	52%	0%
<b>Region</b>	<b>North Country/Lakes</b>	52%	48%	
	<b>Monadnock/Dartmouth</b>	41%	59%	
	<b>Merrimack Valley</b>	52%	47%	1%
	<b>Seacoast/Border</b>	50%	49%	1%
<b>Total</b>		50%	49%	1%

## Governor Chris Sununu Job Approval

		<i>Approve</i>	<i>Disapprove</i>	<i>No Opinion</i>
<b>Gender</b>	<b>Female</b>	65%	34%	1%
	<b>Male</b>	69%	28%	3%
<b>Age</b>	<b>18-34</b>	50%	47%	3%
	<b>35-54</b>	69%	28%	2%
	<b>55-64</b>	74%	26%	1%
	<b>65+</b>	68%	31%	0%
<b>Education</b>	<b>High School or Less</b>	75%	21%	3%
	<b>Some College/Associates Degree</b>	67%	32%	1%
	<b>College Graduate</b>	68%	31%	1%
	<b>Graduate/Professional School</b>	61%	38%	2%
<b>Ideology</b>	<b>Very Conservative</b>	84%	14%	2%
	<b>Somewhat Conservative</b>	91%	7%	1%
	<b>Moderate</b>	64%	35%	1%
	<b>Somewhat Liberal</b>	58%	39%	3%
	<b>Very Liberal</b>	31%	68%	1%
<b>Party Registration</b>	<b>Democratic</b>	41%	57%	1%
	<b>Republican</b>	85%	13%	2%
	<b>Undeclared</b>	75%	24%	2%
<b>Party Identification</b>	<b>Democratic</b>	48%	50%	2%
	<b>Republican</b>	87%	12%	2%
	<b>Swing</b>	78%	22%	
<b>Congressional District</b>	<b>CD-1</b>	69%	30%	2%
	<b>CD-2</b>	66%	32%	2%
<b>Region</b>	<b>North Country/Lakes</b>	69%	31%	
	<b>Monadnock/Dartmouth</b>	69%	31%	
	<b>Merrimack Valley</b>	67%	31%	2%
	<b>Seacoast/Border</b>	67%	31%	2%
<b>Total</b>		67%	31%	2%

### Senator Jeanne Shaheen Job Approval

		<i>Approve</i>	<i>Disapprove</i>	<i>No Opinion</i>
<b>Gender</b>	<b>Female</b>	61%	33%	7%
	<b>Male</b>	41%	54%	6%
<b>Age</b>	<b>18-34</b>	34%	55%	11%
	<b>35-54</b>	48%	43%	9%
	<b>55-64</b>	44%	53%	4%
	<b>65+</b>	73%	25%	2%
<b>Education</b>	<b>High School or Less</b>	46%	47%	8%
	<b>Some College/Associates Degree</b>	47%	48%	5%
	<b>College Graduate</b>	51%	41%	7%
	<b>Graduate/Professional School</b>	61%	35%	4%
<b>Ideology</b>	<b>Very Conservative</b>	5%	90%	5%
	<b>Somewhat Conservative</b>	26%	67%	7%
	<b>Moderate</b>	37%	56%	7%
	<b>Somewhat Liberal</b>	87%	6%	7%
	<b>Very Liberal</b>	80%	16%	3%
<b>Party Registration</b>	<b>Democratic</b>	88%	9%	3%
	<b>Republican</b>	15%	78%	7%
	<b>Undeclared</b>	48%	44%	8%
<b>Party Identification</b>	<b>Democratic</b>	85%	9%	6%
	<b>Republican</b>	16%	77%	7%
	<b>Swing</b>	34%	60%	6%
<b>Congressional District</b>	<b>CD-1</b>	52%	43%	5%
	<b>CD-2</b>	50%	43%	7%
<b>Region</b>	<b>North Country/Lakes</b>	51%	47%	2%
	<b>Monadnock/Dartmouth</b>	48%	44%	8%
	<b>Merrimack Valley</b>	53%	39%	8%
	<b>Seacoast/Border</b>	50%	45%	5%
<b>Total</b>		51%	43%	6%



## Senator Maggie Hassan Job Approval

		<i>Approve</i>	<i>Disapprove</i>	<i>No Opinion</i>
<b>Gender</b>	<b>Female</b>	58%	33%	9%
	<b>Male</b>	34%	57%	9%
<b>Age</b>	<b>18-34</b>	35%	52%	13%
	<b>35-54</b>	45%	44%	11%
	<b>55-64</b>	37%	56%	7%
	<b>65+</b>	65%	30%	5%
<b>Education</b>	<b>High School or Less</b>	36%	51%	13%
	<b>Some College/Associates Degree</b>	45%	48%	7%
	<b>College Graduate</b>	47%	43%	11%
	<b>Graduate/Professional School</b>	57%	36%	6%
<b>Ideology</b>	<b>Very Conservative</b>	4%	88%	8%
	<b>Somewhat Conservative</b>	18%	73%	9%
	<b>Moderate</b>	31%	58%	11%
	<b>Somewhat Liberal</b>	81%	7%	12%
	<b>Very Liberal</b>	83%	14%	3%
<b>Party Registration</b>	<b>Democratic</b>	86%	10%	4%
	<b>Republican</b>	9%	81%	10%
	<b>Undeclared</b>	42%	46%	12%
<b>Party Identification</b>	<b>Democratic</b>	83%	11%	7%
	<b>Republican</b>	10%	80%	10%
	<b>Swing</b>	29%	58%	13%
<b>Congressional District</b>	<b>CD-1</b>	46%	46%	8%
	<b>CD-2</b>	47%	43%	10%
<b>Region</b>	<b>North Country/Lakes</b>	48%	51%	1%
	<b>Monadnock/Dartmouth</b>	48%	42%	10%
	<b>Merrimack Valley</b>	48%	42%	10%
	<b>Seacoast/Border</b>	45%	46%	10%
<b>Total</b>		47%	44%	9%

### Congressman Chris Pappas Job Approval

		<i>Approve</i>	<i>Disapprove</i>	<i>No Opinion</i>
<b>Gender</b>	<b>Female</b>	56%	27%	18%
	<b>Male</b>	35%	50%	16%
<b>Age</b>	<b>18-34</b>	32%	47%	22%
	<b>35-54</b>	42%	36%	22%
	<b>55-64</b>	37%	47%	16%
	<b>65+</b>	63%	29%	8%
<b>Education</b>	<b>High School or Less</b>	39%	48%	13%
	<b>Some College/Associates Degree</b>	44%	40%	16%
	<b>College Graduate</b>	44%	37%	19%
	<b>Graduate/Professional School</b>	52%	33%	15%
<b>Ideology</b>	<b>Very Conservative</b>	7%	82%	10%
	<b>Somewhat Conservative</b>	22%	63%	15%
	<b>Moderate</b>	33%	44%	22%
	<b>Somewhat Liberal</b>	78%	9%	13%
	<b>Very Liberal</b>	69%	5%	27%
<b>Party Registration</b>	<b>Democratic</b>	78%	6%	16%
	<b>Republican</b>	16%	74%	10%
	<b>Undeclared</b>	41%	37%	22%
<b>Party Identification</b>	<b>Democratic</b>	74%	6%	20%
	<b>Republican</b>	14%	74%	12%
	<b>Swing</b>	40%	38%	22%
<b>Region</b>	<b>North Country/Lakes</b>	43%	42%	16%
	<b>Monadnock/Dartmouth</b>	100%		
	<b>Merrimack Valley</b>	48%	38%	14%
	<b>Seacoast/Border</b>	44%	38%	18%
<b>Total</b>		45%	38%	17%

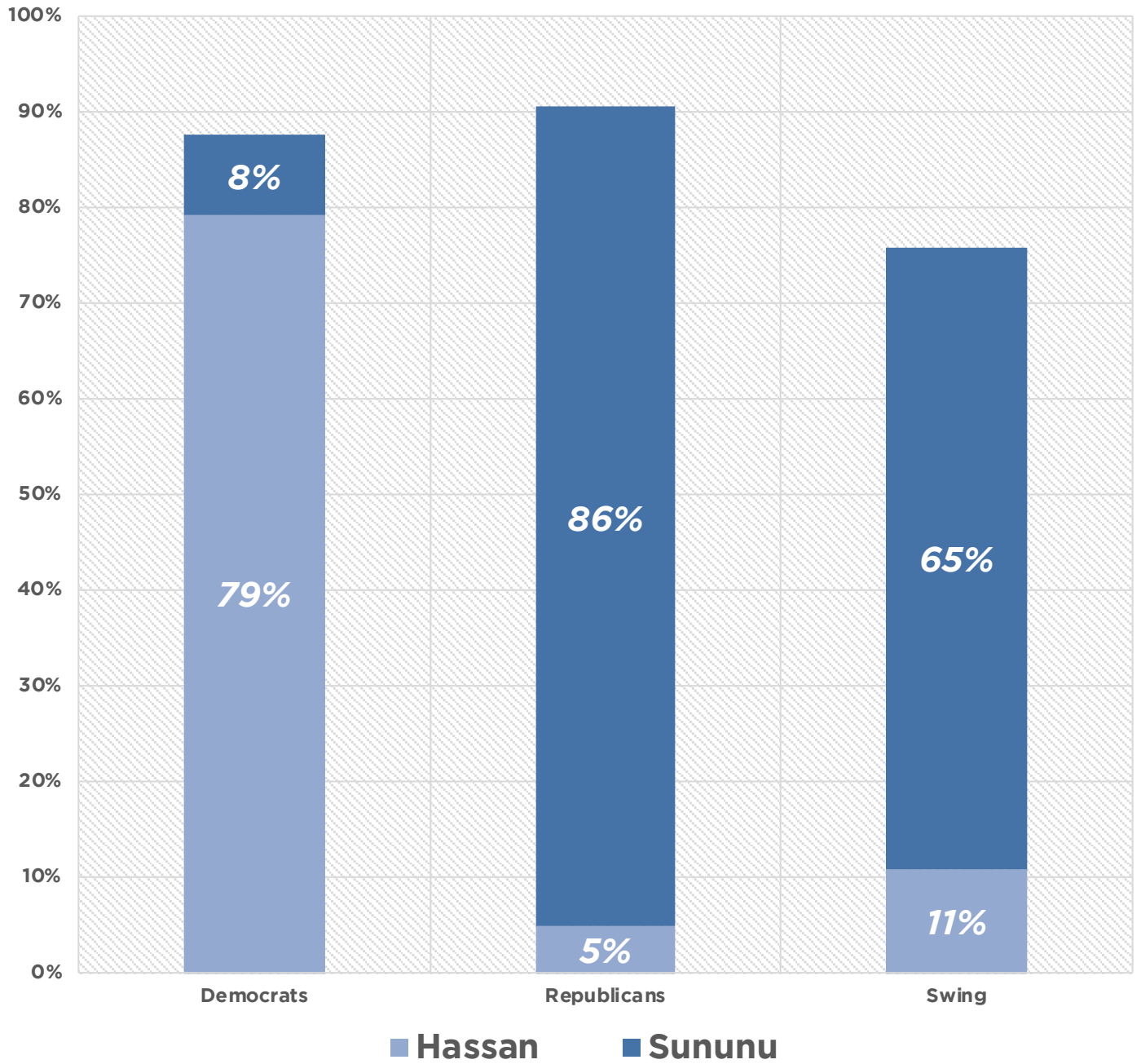
### Congresswoman Annie Kuster Job Approval

		<i>Approve</i>	<i>Disapprove</i>	<i>No Opinion</i>
<b>Gender</b>	<b>Female</b>	58%	29%	14%
	<b>Male</b>	36%	51%	13%
<b>Age</b>	<b>18-34</b>	37%	37%	26%
	<b>35-54</b>	46%	38%	16%
	<b>55-64</b>	38%	54%	8%
	<b>65+</b>	69%	25%	6%
<b>Education</b>	<b>High School or Less</b>	43%	39%	18%
	<b>Some College/Associates Degree</b>	43%	47%	10%
	<b>College Graduate</b>	45%	38%	16%
	<b>Graduate/Professional School</b>	64%	25%	11%
<b>Ideology</b>	<b>Very Conservative</b>	5%	87%	8%
	<b>Somewhat Conservative</b>	20%	65%	16%
	<b>Moderate</b>	29%	49%	22%
	<b>Somewhat Liberal</b>	79%	5%	16%
	<b>Very Liberal</b>	89%	6%	6%
<b>Party Registration</b>	<b>Democratic</b>	85%	5%	10%
	<b>Republican</b>	13%	75%	12%
	<b>Undeclared</b>	42%	40%	17%
<b>Party Identification</b>	<b>Democratic</b>	86%	5%	10%
	<b>Republican</b>	12%	74%	14%
	<b>Swing</b>	16%	55%	29%
<b>Region</b>	<b>North Country/Lakes</b>	33%	67%	
	<b>Monadnock/Dartmouth</b>	46%	35%	19%
	<b>Merrimack Valley</b>	48%	39%	13%
	<b>Seacoast/Border</b>	52%	36%	12%
<b>Total</b>		48%	39%	13%

**If the election for US Senate were held today, and the candidates were Maggie Hassan and Chris Sununu, for whom would you vote?**

		<i>Maggie Hassan</i>	<i>Chris Sununu</i>	<i>Someone Else</i>	<i>Unsure</i>
<b>Gender</b>	<b>Female</b>	49%	40%	5%	6%
	<b>Male</b>	32%	53%	9%	6%
<b>Age</b>	<b>18-34</b>	40%	37%	16%	7%
	<b>35-54</b>	38%	48%	9%	6%
	<b>55-64</b>	29%	60%	4%	7%
	<b>65+</b>	59%	37%	1%	3%
<b>Education</b>	<b>High School or Less</b>	33%	53%	5%	8%
	<b>Some College/Associates Degree</b>	35%	52%	9%	4%
	<b>College Graduate</b>	43%	45%	5%	7%
	<b>Graduate/Professional School</b>	54%	35%	7%	4%
<b>Ideology</b>	<b>Very Conservative</b>		88%	9%	2%
	<b>Somewhat Conservative</b>	8%	81%	5%	7%
	<b>Moderate</b>	22%	55%	20%	3%
	<b>Somewhat Liberal</b>	74%	16%	2%	8%
	<b>Very Liberal</b>	88%	1%	7%	3%
<b>Party Registration</b>	<b>Democratic</b>	85%	5%	4%	5%
	<b>Republican</b>	5%	84%	7%	3%
	<b>Undeclared</b>	32%	52%	8%	8%
<b>Party Identification</b>	<b>Democratic</b>	79%	8%	5%	7%
	<b>Republican</b>	5%	86%	6%	4%
	<b>Swing</b>	11%	65%	18%	6%
<b>Congressional District</b>	<b>CD-1</b>	38%	48%	8%	6%
	<b>CD-2</b>	44%	45%	6%	5%
<b>Region</b>	<b>North Country/Lakes</b>	35%	50%	10%	5%
	<b>Monadnock/Dartmouth</b>	42%	49%	5%	5%
	<b>Merrimack Valley</b>	43%	47%	5%	5%
	<b>Seacoast/Border</b>	41%	45%	8%	6%
<b>Total</b>		41%	47%	7%	5%

## BALLOT TEST BY PARTY ID: SUNUNU VS. HASSAN



**If Joe Biden decides not to run for re-election, do you think the Democratic Party should nominate Kamala Harris for president, or would you support someone else?  
(Democratic ID Only)**

		<i>Harris</i>	<i>Someone Else</i>	<i>Unsure</i>
<b>Gender</b>	<b>Female</b>	47%	20%	33%
	<b>Male</b>	41%	36%	23%
<b>Age</b>	<b>18-34</b>	15%	68%	17%
	<b>35-54</b>	47%	25%	28%
	<b>55-64</b>	55%	14%	30%
	<b>65+</b>	51%	11%	38%
<b>Education</b>	<b>High School or Less</b>	36%	40%	24%
	<b>Some College/Associates Degree</b>	47%	25%	28%
	<b>College Graduate</b>	41%	34%	24%
	<b>Graduate/Professional School</b>	49%	10%	41%
<b>Ideology</b>	<b>Very Conservative</b>			
	<b>Somewhat Conservative</b>	30%	20%	50%
	<b>Moderate</b>	28%	53%	19%
	<b>Somewhat Liberal</b>	48%	18%	34%
	<b>Very Liberal</b>	45%	32%	23%
<b>Party Registration</b>	<b>Democratic</b>	49%	26%	24%
	<b>Undeclared</b>	36%	24%	40%
<b>Congressional District</b>	<b>CD-1</b>	46%	25%	29%
	<b>CD-2</b>	43%	26%	31%
<b>Region</b>	<b>North Country/Lakes</b>	50%	20%	30%
	<b>Monadnock/Dartmouth</b>	50%	25%	25%
	<b>Merrimack Valley</b>	43%	26%	31%
	<b>Seacoast/Border</b>	44%	26%	29%
<b>Total</b>		45%	25%	30%

**Do you think Donald Trump should continue to play an important role in the Republican Party, or is it time for the Party to move on? (Republican ID Only)**

		<i>Important Role</i>	<i>Move On</i>	<i>Unsure</i>
<b>Gender</b>	<b>Female</b>	72%	20%	8%
	<b>Male</b>	70%	23%	7%
<b>Age</b>	<b>18-34</b>	73%	20%	6%
	<b>35-54</b>	65%	27%	9%
	<b>55-64</b>	76%	16%	7%
	<b>65+</b>	71%	23%	6%
<b>Education</b>	<b>High School or Less</b>	89%	11%	
	<b>Some College/Associates Degree</b>	74%	16%	10%
	<b>College Graduate</b>	62%	32%	6%
	<b>Graduate/Professional School</b>	51%	35%	15%
<b>Ideology</b>	<b>Very Conservative</b>	91%	6%	3%
	<b>Somewhat Conservative</b>	61%	27%	11%
	<b>Moderate</b>	60%	37%	3%
	<b>Somewhat Liberal</b>	41%	59%	
	<b>Very Liberal</b>	100%		
<b>Party Registration</b>	<b>Republican</b>	77%	18%	5%
	<b>Undeclared</b>	59%	29%	12%
<b>Congressional District</b>	<b>CD-1</b>	70%	22%	8%
	<b>CD-2</b>	72%	21%	7%
<b>Region</b>	<b>North Country/Lakes</b>	75%	18%	7%
	<b>Monadnock/Dartmouth</b>	76%	12%	12%
	<b>Merrimack Valley</b>	69%	23%	8%
	<b>Seacoast/Border</b>	70%	25%	5%
<b>Total</b>		71%	22%	7%

# DEMOGRAPHICS

<b>Gender</b>			
		<i>Frequency</i>	<i>Percent</i>
	<b>Female</b>	453	52
	<b>Male</b>	418	48
	<b>Total</b>	871	100

<b>Age</b>			
		<i>Frequency</i>	<i>Percent</i>
	<b>18-34</b>	136	16
	<b>35-54</b>	282	32
	<b>55-64</b>	227	26
	<b>65+</b>	226	26
	<b>Total</b>	871	100

<b>Education</b>			
		<i>Frequency</i>	<i>Percent</i>
	<b>High School or Less</b>	145	17
	<b>Some College/Associates Degree</b>	293	34
	<b>College Graduate</b>	242	28
	<b>Graduate/Professional School</b>	191	22
	<b>Total</b>	871	100

<b>Region</b>			
		<i>Frequency</i>	<i>Percent</i>
	<b>North Country/Lakes</b>	94	11
	<b>Monadnock/Dartmouth</b>	87	10
	<b>Merrimack Valley</b>	341	39
	<b>Seacoast/Border</b>	348	40
	<b>Total</b>	871	100

<b>Congressional District</b>			
		<i>Frequency</i>	<i>Percent</i>
	<b>CD-1</b>	439	50
	<b>CD-2</b>	432	50
	<b>Total</b>	871	100



<b>Party Registration</b>			
		<i>Frequency</i>	<i>Percent</i>
	<b>Democratic</b>	273	31
	<b>Republican</b>	247	28
	<b>Undeclared</b>	351	40
	<b>Total</b>	871	100
CD1	<b>Democratic</b>	133	30
	<b>Republican</b>	128	29
	<b>Undeclared</b>	177	40
	<b>Total</b>	438	100
CD2	<b>Democratic</b>	140	32
	<b>Republican</b>	119	28
	<b>Undeclared</b>	173	40
	<b>Total</b>	432	100

<b>Party Identification</b>			
		<i>Frequency</i>	<i>Percent</i>
	<b>Democratic</b>	418	48
	<b>Republican</b>	370	43
	<b>Swing</b>	83	9
	<b>Total</b>	871	100
CD1	<b>Democratic</b>	208	47
	<b>Republican</b>	187	43
	<b>Swing</b>	44	10
	<b>Total</b>	439	100
CD2	<b>Democratic</b>	210	49
	<b>Republican</b>	184	43
	<b>Swing</b>	39	9
	<b>Total</b>	433	100